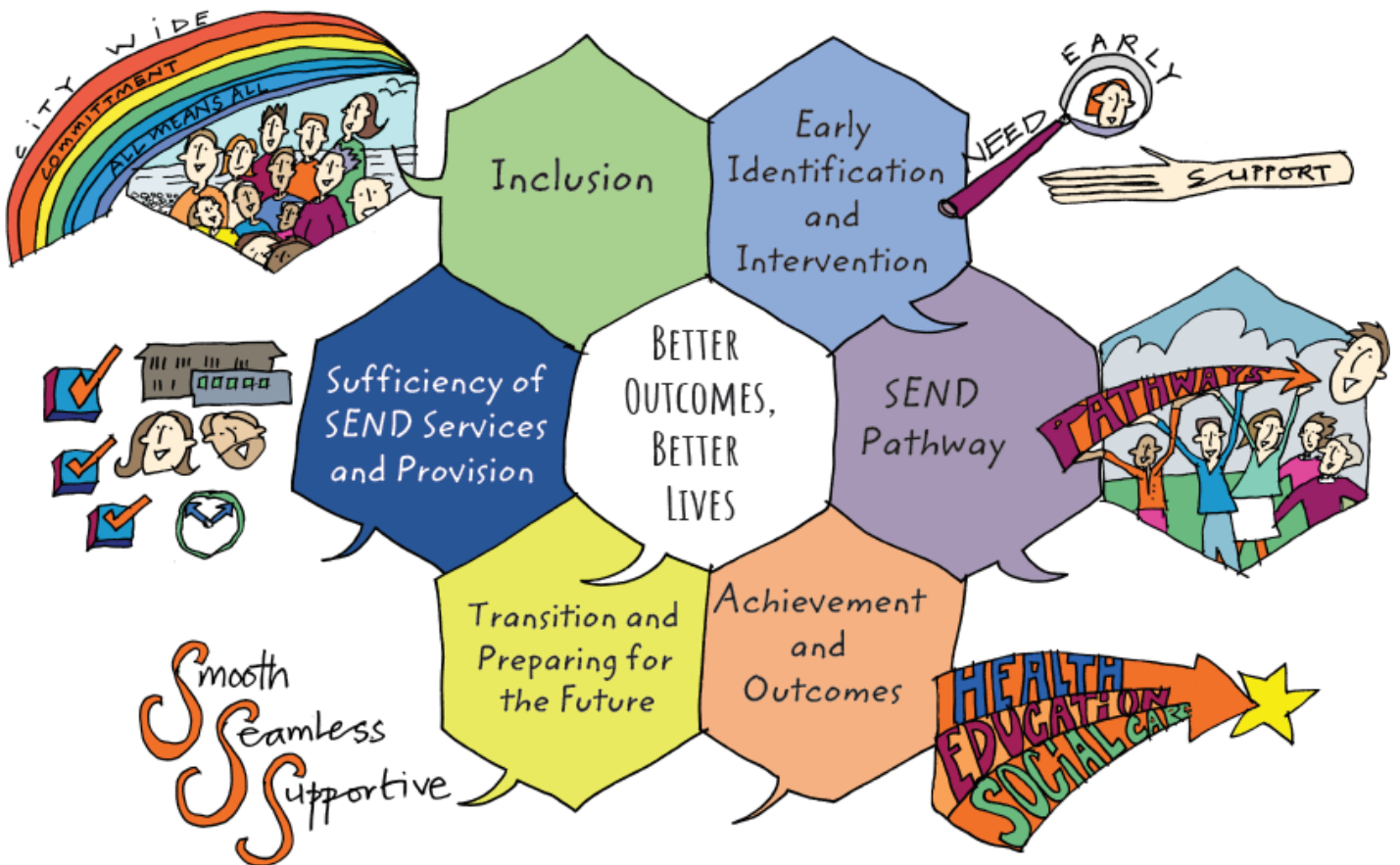




# Special Educational Needs and Disability Strategy

Easy Read





## What is a strategy?



A strategy is a plan.

This is a plan for Special Educational Needs and Disability services in Brighton and Hove.



## Why is this plan important?



We want children and young people with special educational needs and adults with learning disabilities to live healthy, happy lives.



This plan will help services to support people to achieve the very best they can.



## Who wrote the plan?



Lots of different people worked together to write the plan.

- Children and young people



- Parents and carers



- The council
- Schools, colleges
- Parent and Carers' Council
- Amaze



## How did we know what to put in the plan?



We asked lots of different people what they thought should be in the plan.



- We met with children, young people and young adults.

We heard what they had to say about their lives and hopes for the future.

They worked with an artist who put their ideas into colourful artwork.



- Amaze asked young people, families, parents and carers about what life is like for them.
- The council also did a survey on their website to hear people's ideas.





## What did people tell us?



Children, young people, families, carers and adults with learning disabilities told us what matters most to them.



They said there are six things we need to focus on.

We have called these things the Six Priorities.



## This easy read Plan



In this easy read plan we will explain:



- What people said about each Priority

- What we will do



- How we will know if we are getting it right



## What people told us Being Part of Things



- It can be confusing and difficult for people to get the support and services they need.
- People want to feel included in activities in Brighton and Hove.
- They want services to welcome and support children, young people and adults with special educational needs and disabilities.



## What we will do



- Work together to make a checklist so that schools and services know if they are giving people the support they need.
- Reach out to support people and families who might get left out.
  - Black, Asian and minority ethnic groups
  - People who identify as LGBTQ
  - Children, young people and adults with Special Educational Needs and disabilities



- Train staff so that they understand different cultures and support needs.
- Make sure that children and young people can take part in after school clubs and holiday activities.



## How we will know if we are getting it right



- Council services, schools, healthcare, local organisations and families will all work together to plan services.
- There will be accessible activities to suit different needs.
- It will be easier for people with learning disabilities to get good healthcare and annual health checks.



## What people told us Getting the Right Help Early On



- It takes too long for schools to spot when children need extra support.
- It is hard to get mental health support.
- Waiting lists for assessments and therapies are too long.



## What we will do



- Listen to families so that we understand what people need.
- Train schools, parents and professionals so they understand about different disabilities and hidden disabilities.
- Make sure that schools know how to spot if children need extra support early on.



- Make sure mental health services are right for children, young people and young adults with SEND and adults with learning disabilities.



## How we will know if we are getting it right

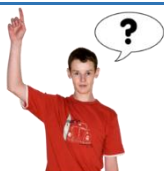


- Families will get help before they have big problems.
- Staff, schools, services and other people will understand more about spotting when people need more support.
- People will tell us that they have good information on where to get help with their mental health.





## What people told us Special Educational Needs and Disability What Comes Next?



- Knowing who to talk to about education and support is confusing.
- People have to speak to a lot of different professionals.  
  
They have to go to lots of meetings and say the same thing over again.
- Families need more respite care and short breaks.



## What we will do



- Make information about services easier to find and understand.
- Make sure that services work together and share information.
- Plan so that more children, young people and adults with a learning disability get short breaks and respite care.



## How we will know if we are getting it right



- Families will only have to go to one meeting to tell their story.
- People will be able to find clear information about services, education, health and support.
- Families will say that the respite and short breaks service is helpful to them.



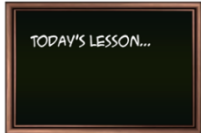
## What people told us Achieving Goals



- There need to be more qualifications for vocational and life skills.
- Mainstream schools need to celebrate the successes of children with special educational needs and disabilities
- People want to carry on learning after college.



## What we will do



- Make sure that people get the chance to succeed at things that are important to them.
- Help mainstream schools teach qualifications that suit children with special educational needs and disabilities.
- Plan with young people so that they carry on learning, working or volunteering as they get older.



## How we will know if we are getting it right



- There will be more learning choices at school for children and young people.
- Children and young people will feel proud of their achievements.
- There will be more learning and working choices for adults with learning disabilities



## What people told us Transitions Getting Ready for the Future



- Transition planning does not start soon enough.
- Young people do not have enough information about what their choices are.
- There are less activities, courses and opportunities as people get older.
- People want the chance to work and volunteer through their life.



## What we will do



- Make sure that information about different stages of education and support is easy to find and understand.
- Different services for children and adults will work together. This will make it easier to plan learning and working after people are twenty five.



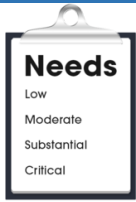
- Support children and young people to be confident and have the skills to be a part of their local community.



## How we will know if we are getting it right

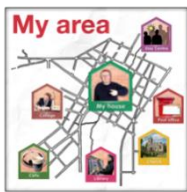


- Children who start primary and secondary school feel ready and confident.
- There will be more work and training choices for young people and adults with special educational needs and disabilities.
- People will know what the next step of their transition plan is.



## What people told us

# The Right Services and Support



- There are not enough of the right services and activities for people with different needs.
- People do not want to travel a long way from home for services and placements.
- There are gaps in services for some age groups and support needs.



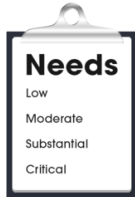
## What we will do



- Share information with health services and providers so that we can plan services better for the future.
- Work with parents, carers, young people and people with learning disabilities to find out what they really need.
- Make sure that information about activities and services is clear and easy to find. This will make it easier for people to access activities and services near where they live.



## How we will know if we are getting it right







- Our services will be planned early so that we have the right support for people when they need it.
- We will have the right information so we know what people need.
- Information about support and services will be easy to find and understand.



## Over to You!



- You might have a question about The Plan.
- Or you might think we have missed something.
- We would love to hear from you!

	<h2 style="text-align: center;">Have your say!</h2>
	<p>Tell us what you think. Ask us questions.</p> <p><a href="mailto:SEN.Team@brighton-hove.gov.uk">SEN.Team@brighton-hove.gov.uk</a></p>
	<h2 style="text-align: center;">Find out more</h2>
	<p>To read the longer plan and find out more</p> <p>LINK</p>



Easy read document by Brighton and Hove Speak Out

