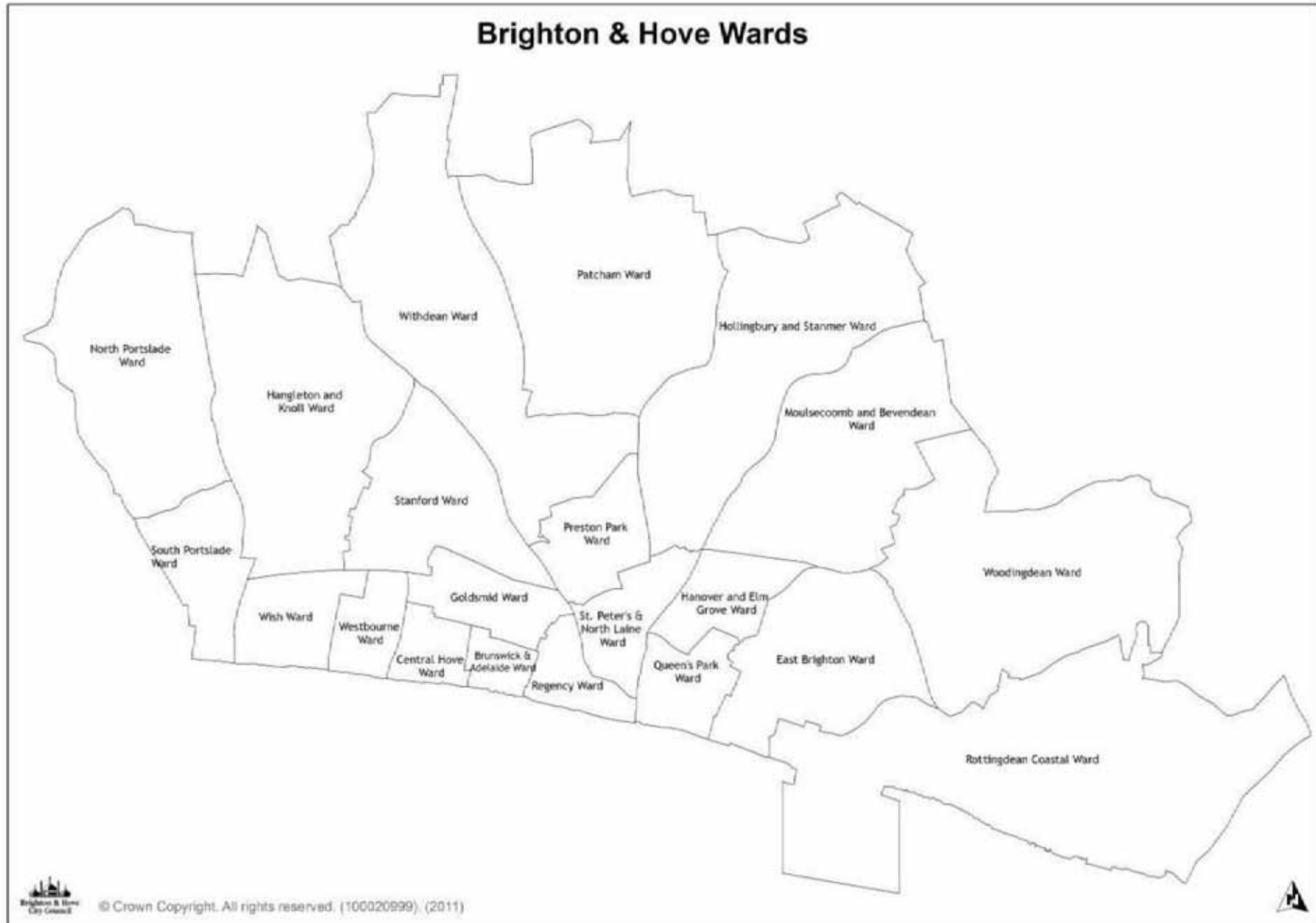


## APPENDIX 5: MAPS SHOWING PROVISION AND QUANTITY OF NON BHCC OPEN SPACE BY WARD<sup>1</sup>

(to be printed at A3)

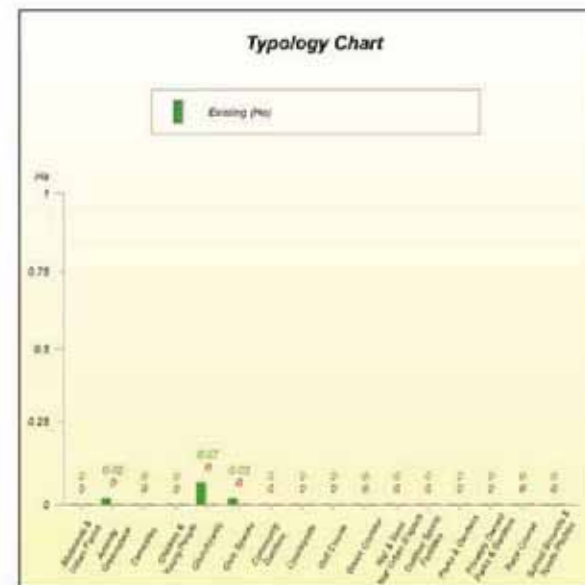
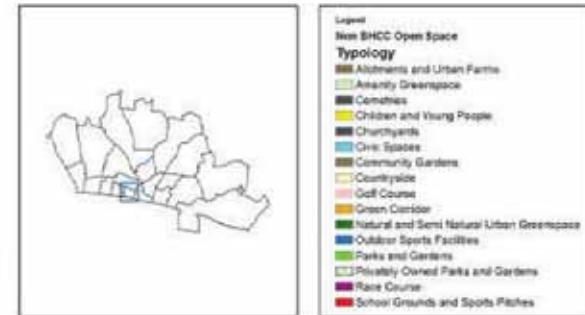
---

<sup>1</sup> Note the following maps show the provision of Non BHCC maps that were included within the audit in this study. Maps are shown by ward. Each site is labelled with a unique reference number which corresponds with the GIS data and the references provided in the audit summary in appendix 6. Each map also has a graph which shows the existing quantity of each typology within the ward. The red 'requirements' bar is not shown as it is not applicable to private sites in this analysis.





### Brunswick and Adelaide Ward



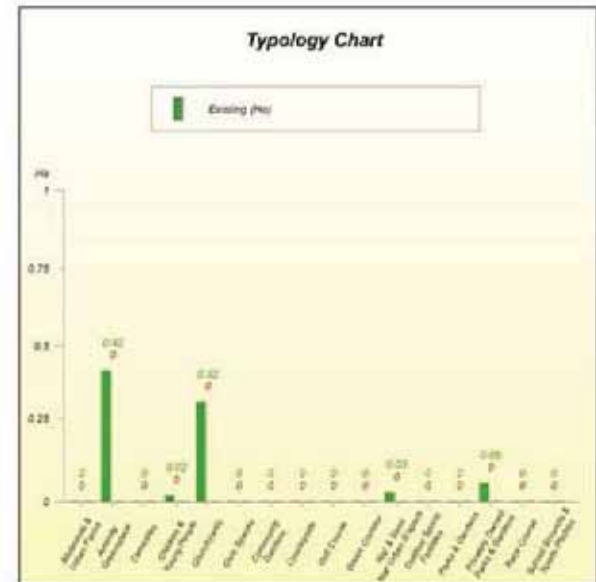
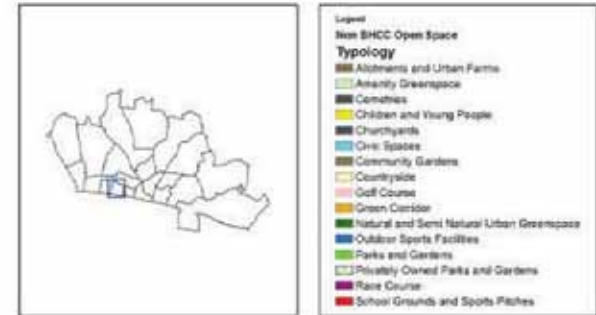
Scale: <b>1:5,000</b>	Map produced on: <b>18/04/2011</b>	
--------------------------	---------------------------------------	--

© Crown Copyright. All rights reserved. (100020999). (2011)

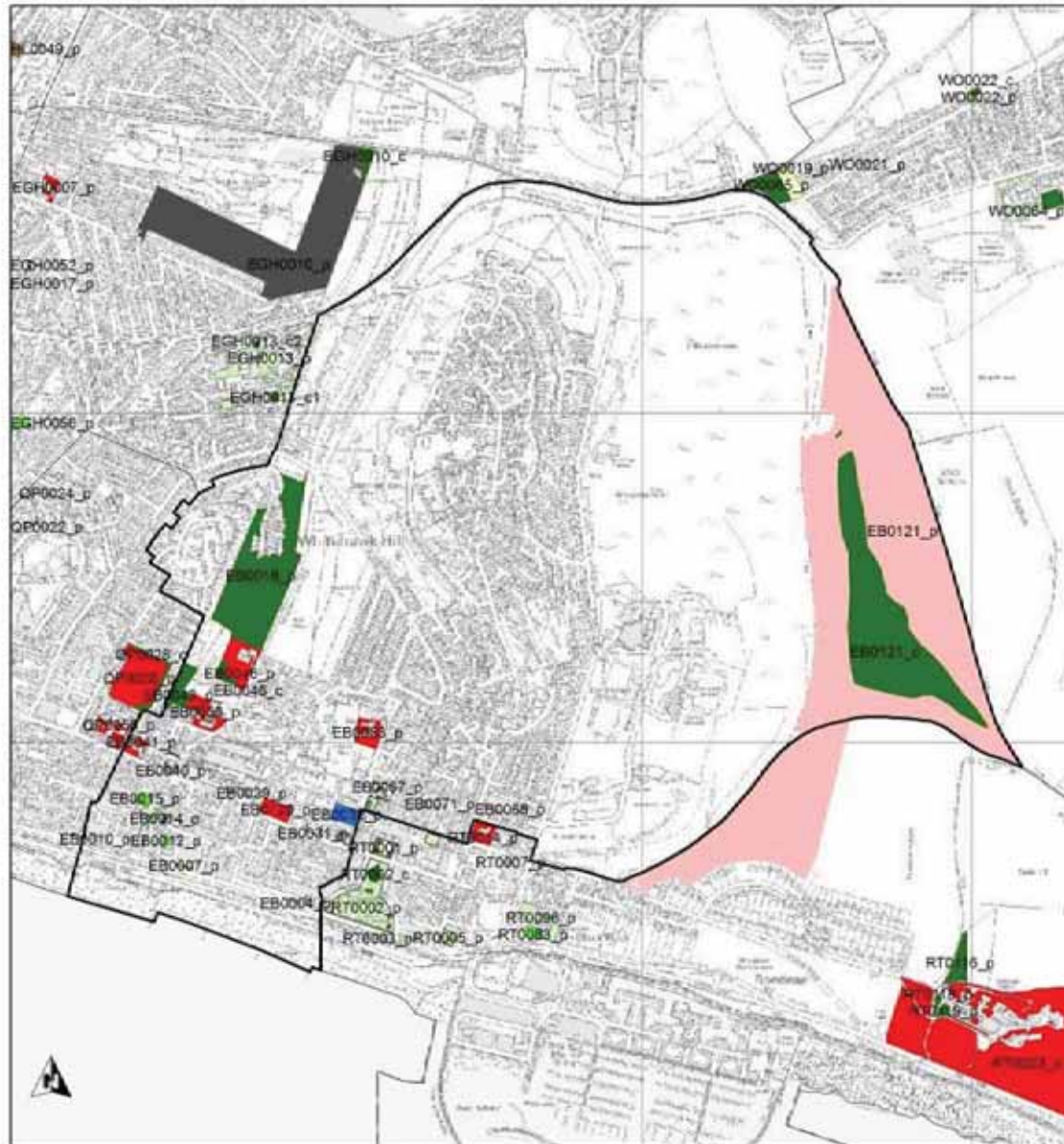


© Crown Copyright. All rights reserved. (100020999). (2011)

### Central Hove Ward

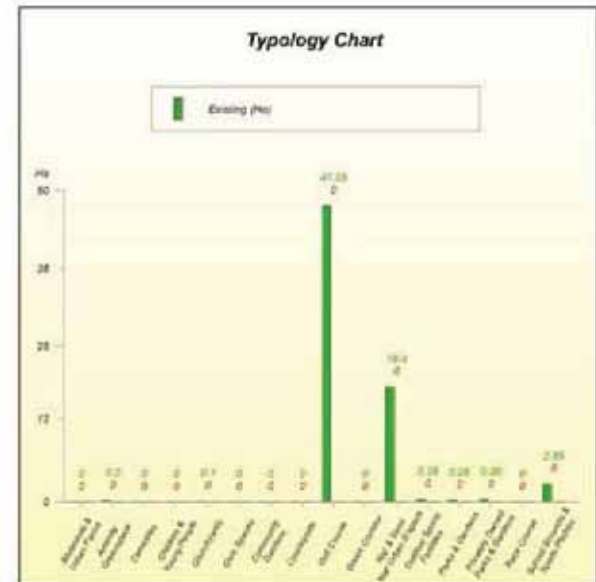
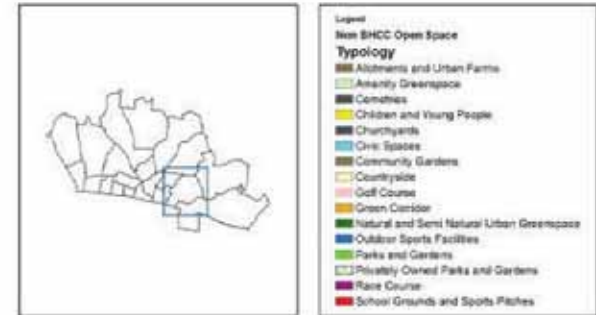


Scale: <b>1:5,000</b>	Map produced on: <b>18/04/2011</b>	
--------------------------	---------------------------------------	--

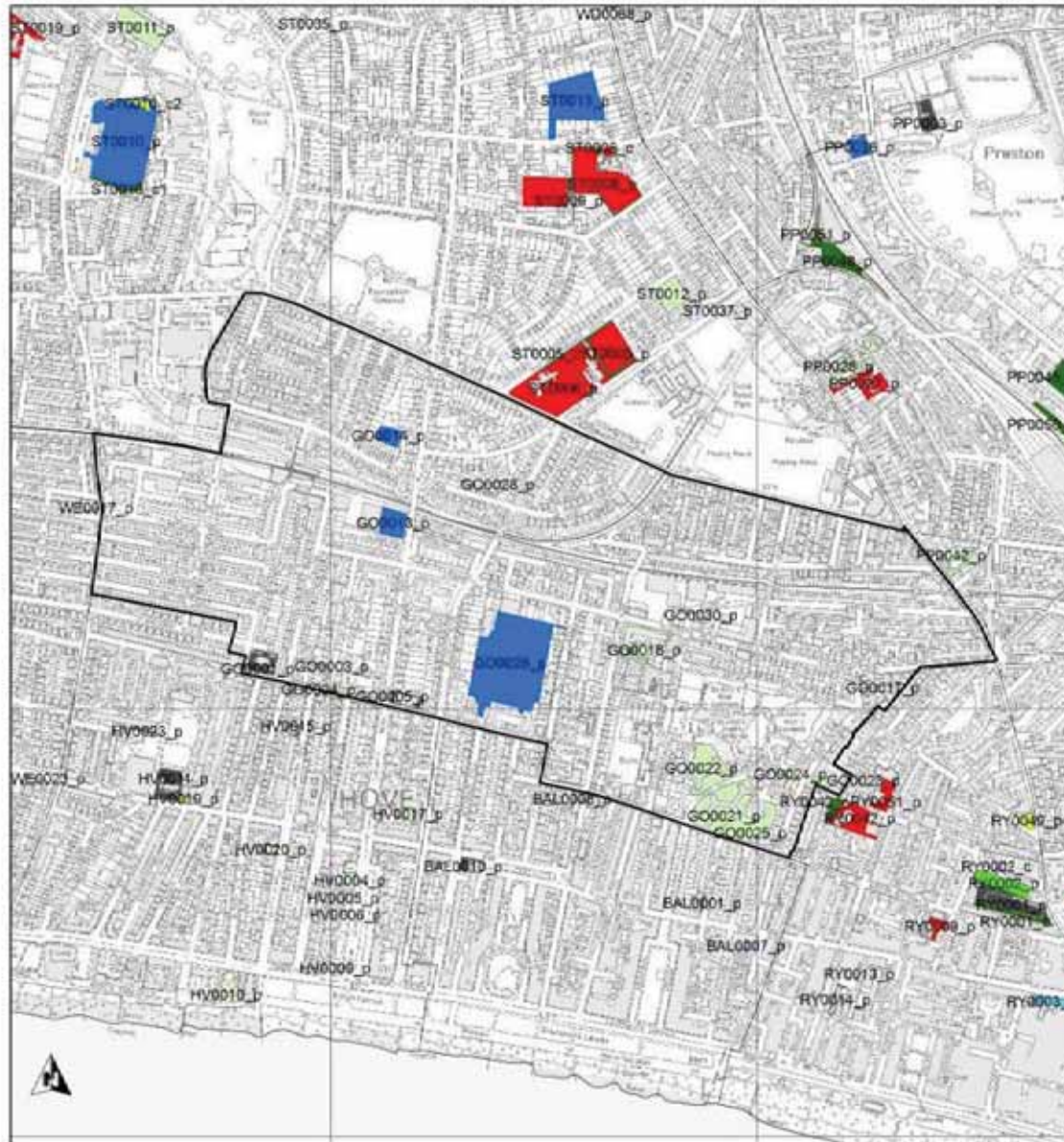


© Crown Copyright. All rights reserved. (100020999) (2011)

### East Brighton Ward

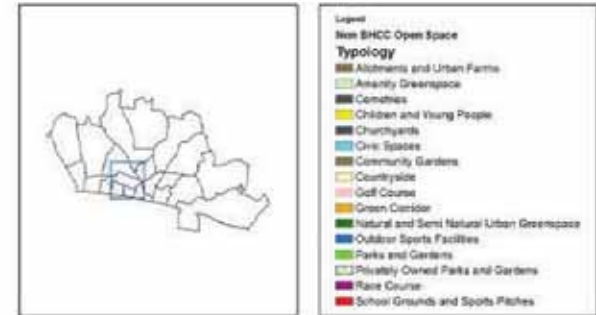


Scale: <b>1:13,000</b>	Map produced on <b>18/04/2011</b>	
---------------------------	--------------------------------------	--



© Crown Copyright. All rights reserved. (100020999) (2011)

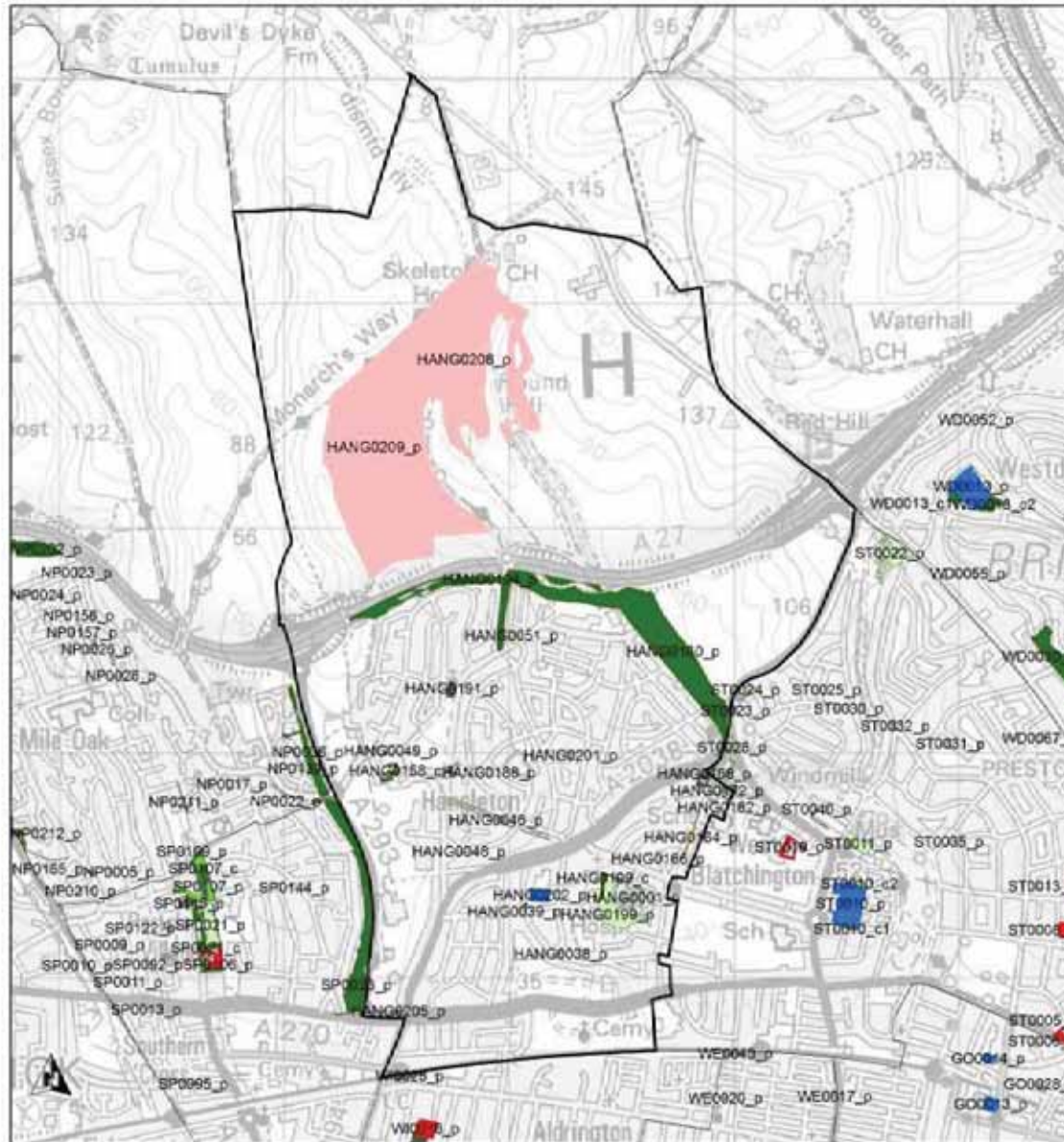
### Goldsmid Ward



### Typology Chart

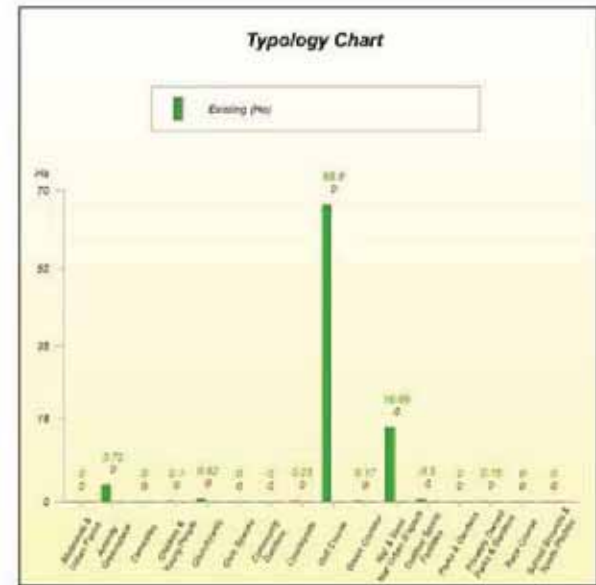
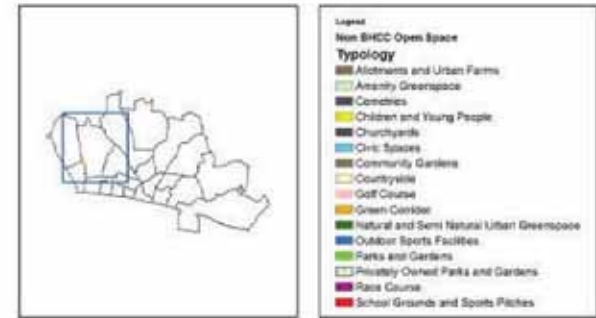


Scale: <b>1:10,000</b>	Map produced on <b>18/04/2011</b>	
---------------------------	--------------------------------------	--



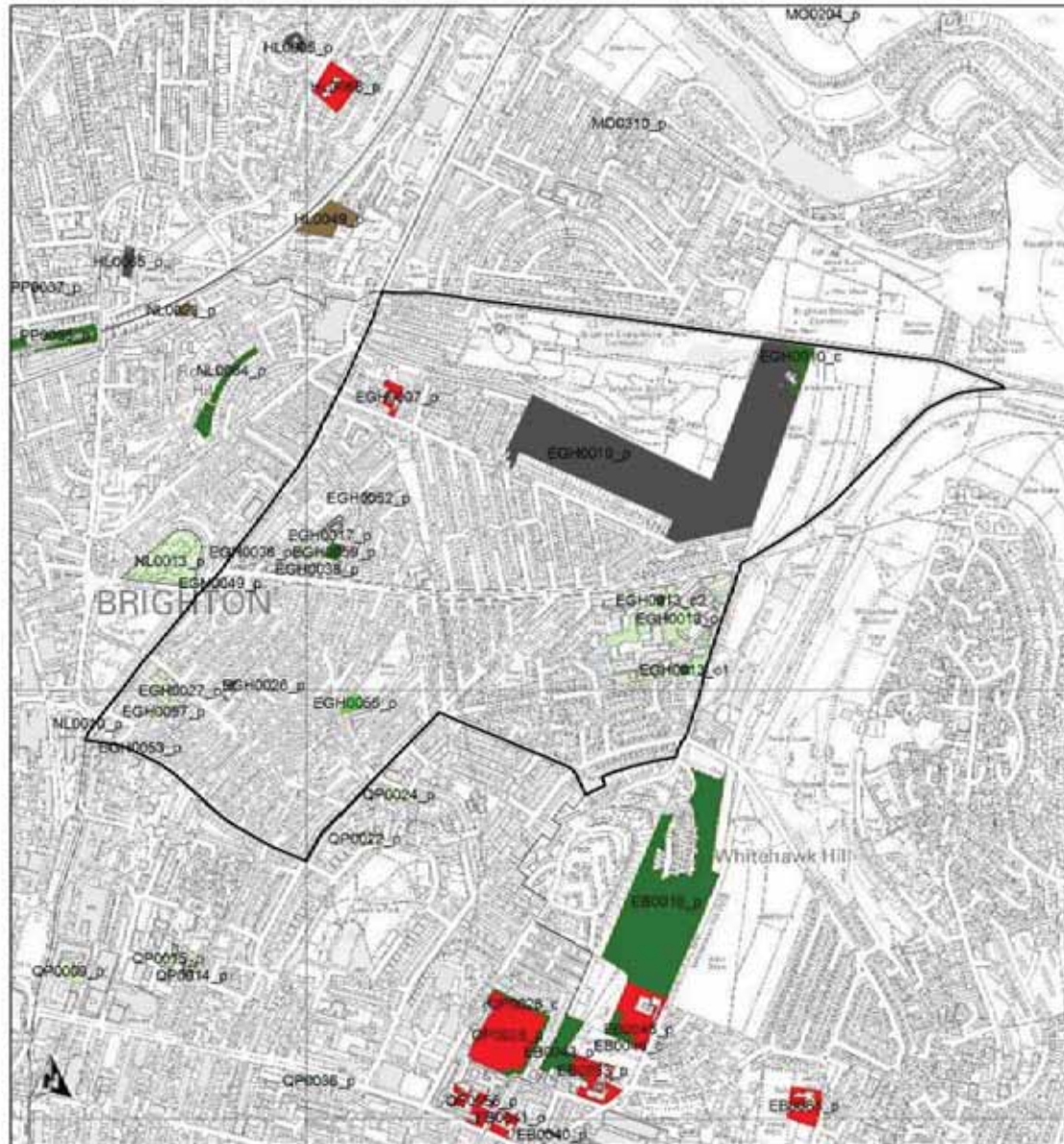
© Crown Copyright. All rights reserved. (100020999). (2011)

### Hangleton and Knoll Ward



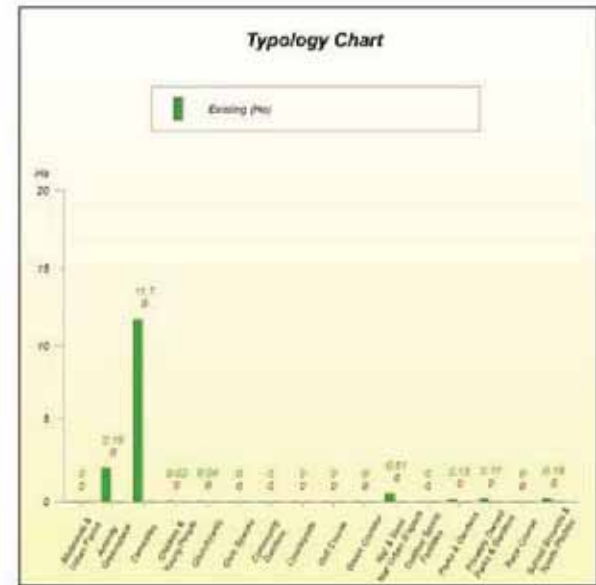
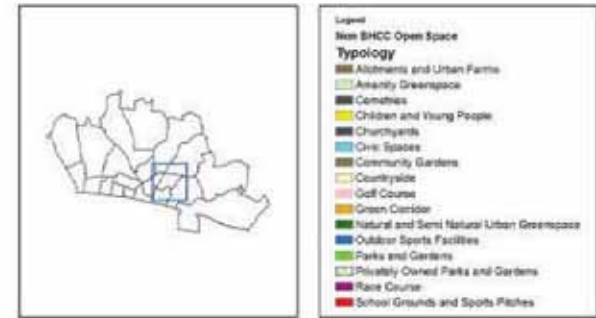
The information in this chart differs to Appendix 3a&b as it refers to Non BHCC space only

Scale: <b>1:19,000</b>	Map produced on <b>11/04/2011</b>	
---------------------------	--------------------------------------	--



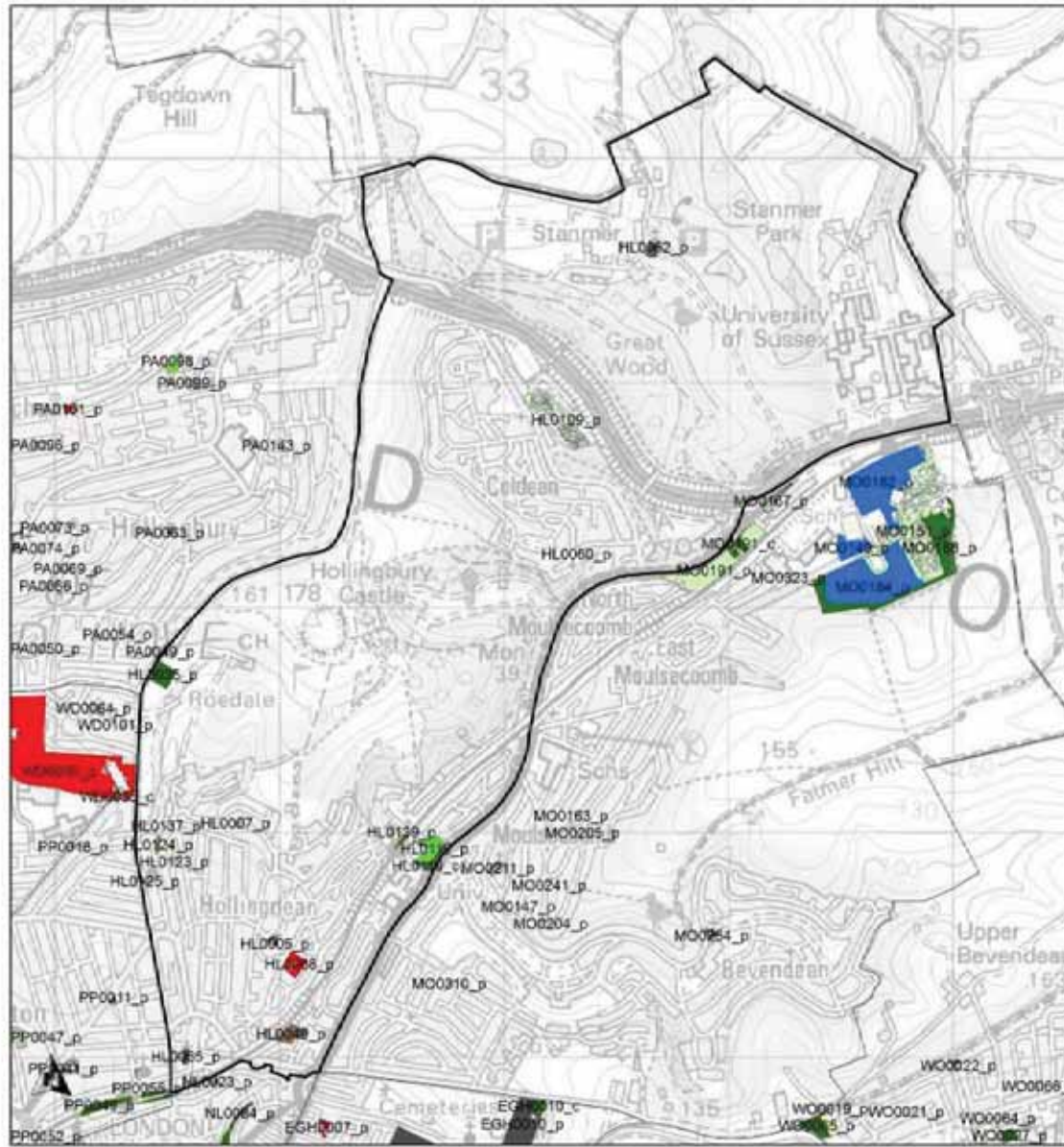
© Crown Copyright. All rights reserved. (100020999). (2011)

### Hanover and Elm Grove Ward

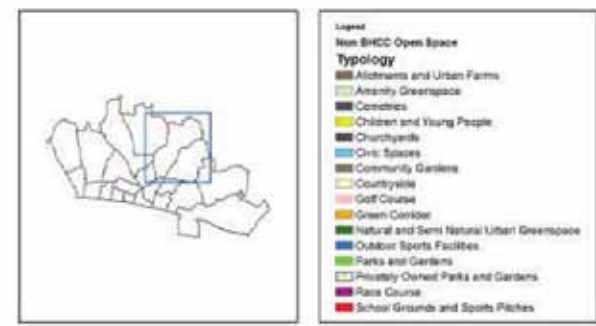


Scale: <b>1:10,000</b>	Map produced on <b>18/04/2011</b>	
---------------------------	--------------------------------------	--





### Hollingbury and Stanmer Ward



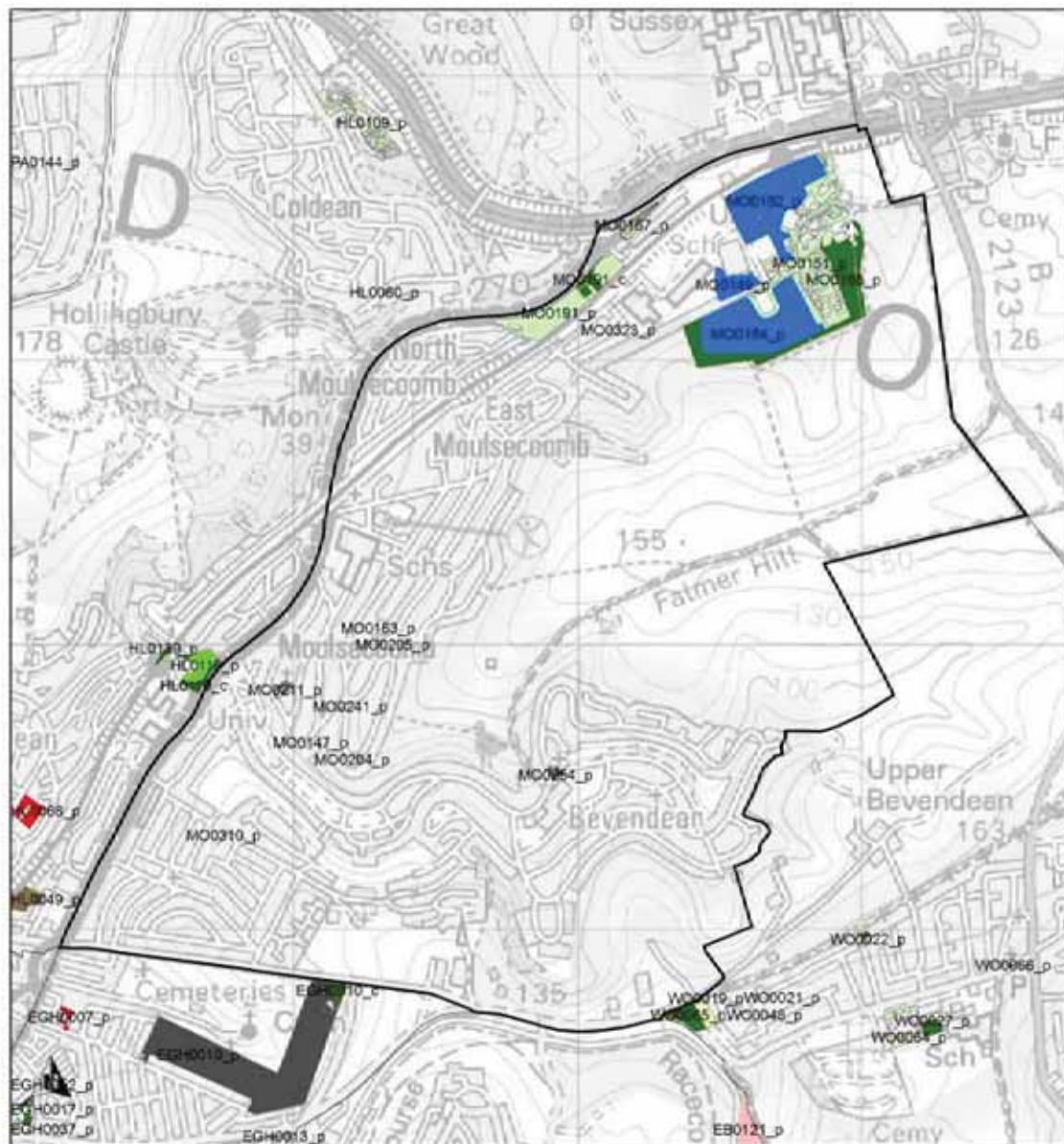
### Typology Chart



The information in this chart differs to Appendix 3a&b as it refers to Non BHCC space only

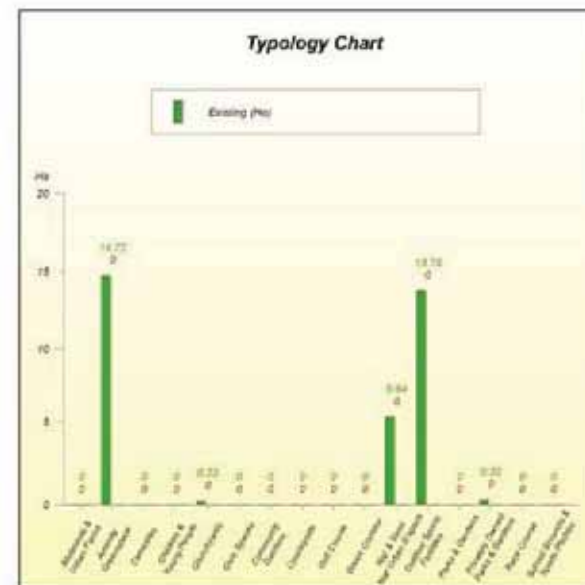
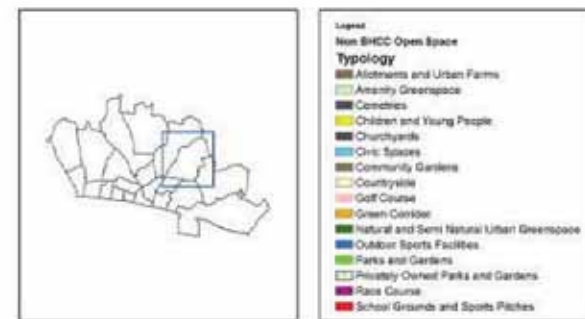
Scale: <b>1:19,000</b>	Map produced on <b>11/04/2011</b>	
---------------------------	--------------------------------------	--

© Crown Copyright. All rights reserved. (100020999). (2011)



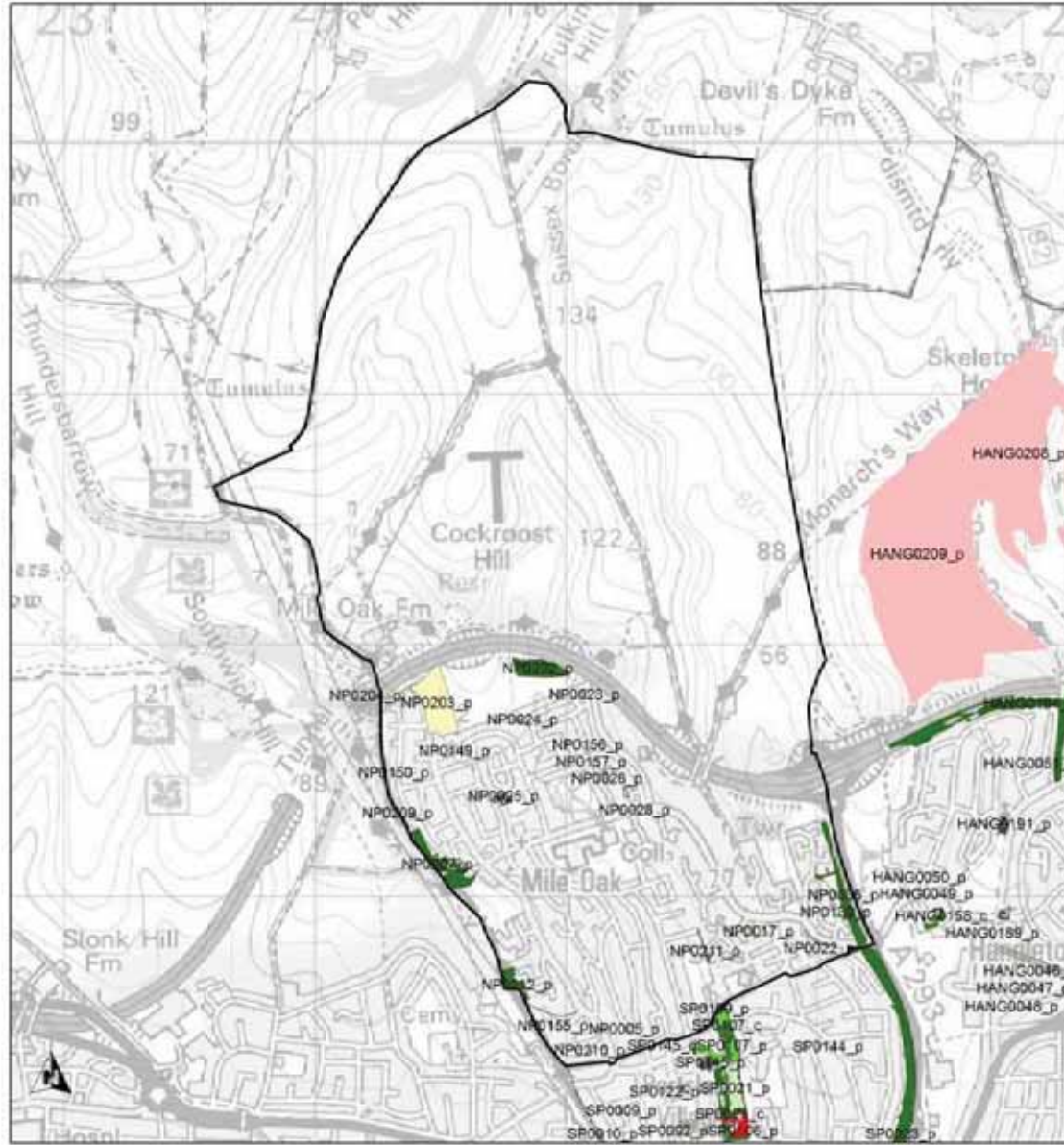
© Crown Copyright. All rights reserved. (100020999). (2011)

### Moulsecoomb and Bevendean Ward



The information in this chart differs to Appendix 3a&b as it refers to Non BHCC space only

Scale: <b>1:15,000</b>	Map produced on <b>11/04/2011</b>	
---------------------------	--------------------------------------	--



© Crown Copyright. All rights reserved. (100020999). (2011)

### North Portslade Ward



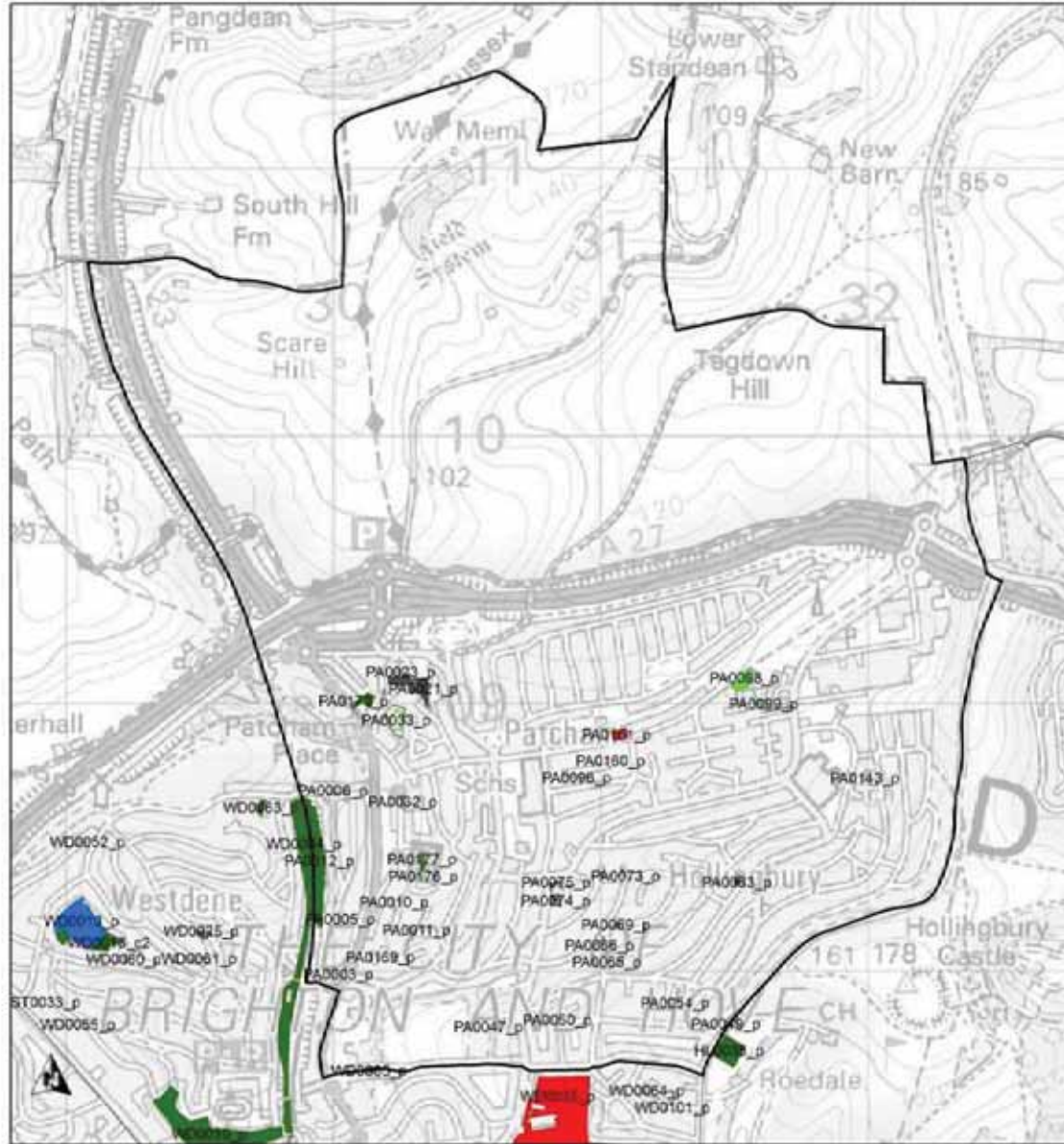
- Legend
- Non BHCC Open Space
- Typology**
- Allotments and Urban Farms
  - Amenity Greenspace
  - Cemeteries
  - Children and Young People
  - Churchyards
  - Civic Spaces
  - Community Gardens
  - Courtyards
  - Golf Course
  - Green Corridor
  - Natural and Semi Natural Urban Greenspace
  - Outdoor Sports Facilities
  - Parks and Gardens
  - Privately Owned Parks and Gardens
  - Race Course
  - School Grounds and Sports Pitches

### Typology Chart



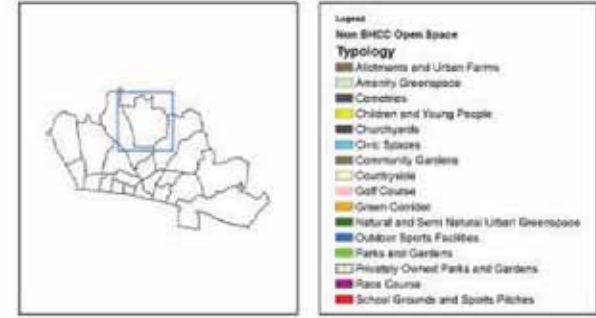
The information in this chart differs to Appendix 3a&b as it refers to Non BHCC space only

Scale:	Map produced on:	
1:17,000	11/04/2011	



© Crown Copyright. All rights reserved. (100020999). (2011)

### Patcham Ward

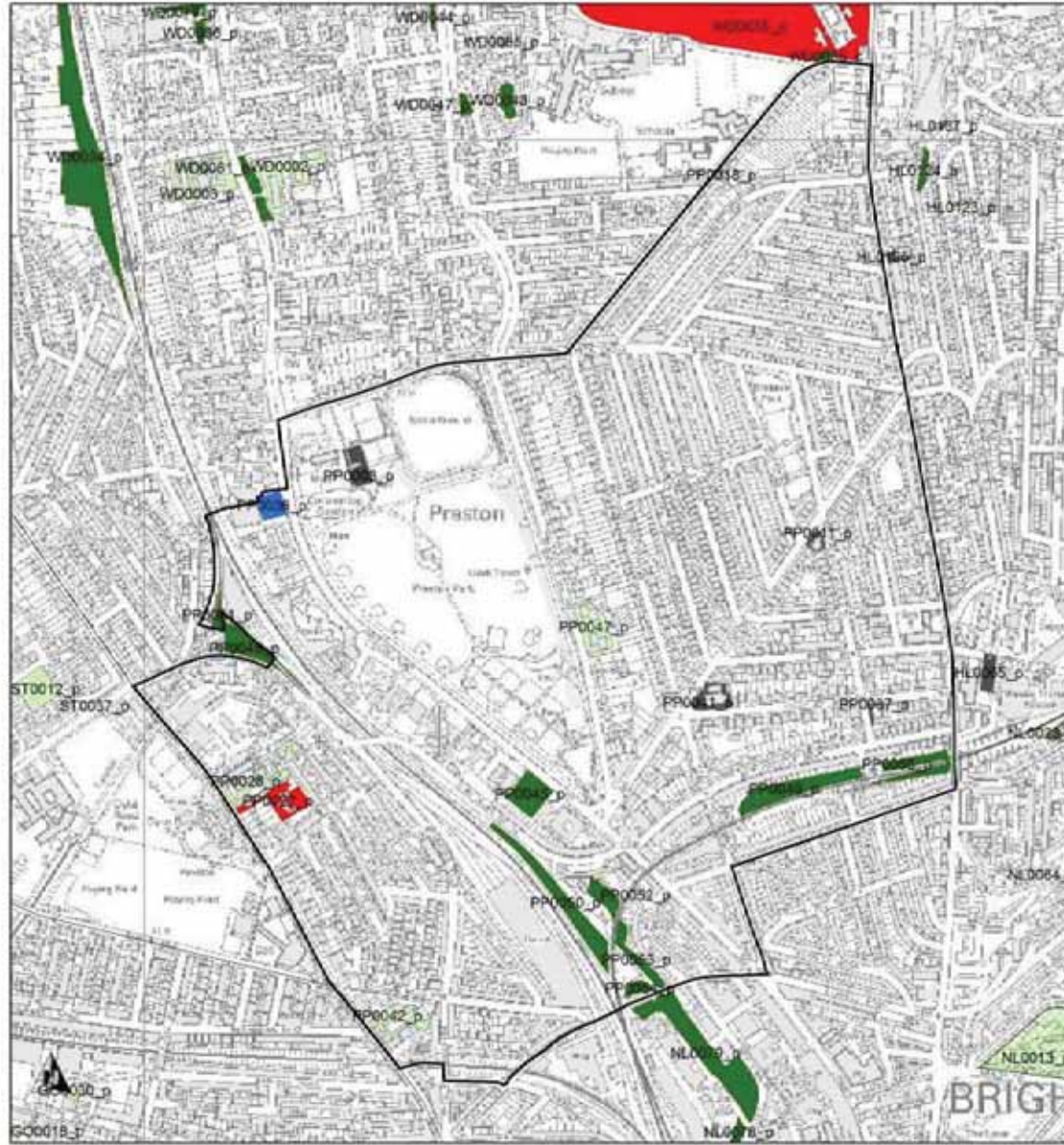


### Typology Chart



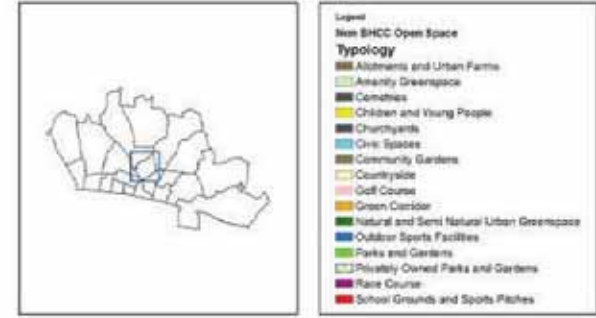
The information in this chart differs to Appendix 3a&b as it refers to Non BHCC space only

Scale: <b>1:16,000</b>	Map produced on <b>11/04/2011</b>	
---------------------------	--------------------------------------	--

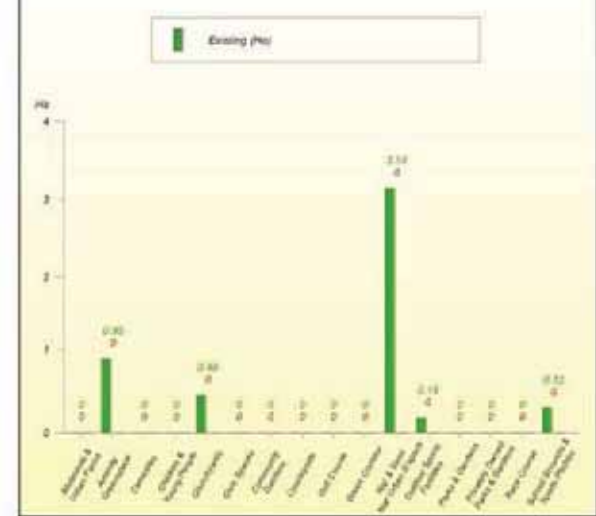


© Crown Copyright. All rights reserved. (100020999) (2011)

### Preston Park Ward



### Typology Chart

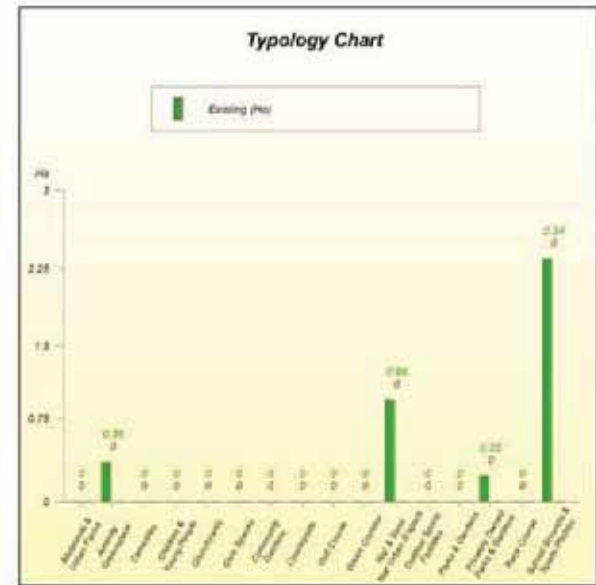
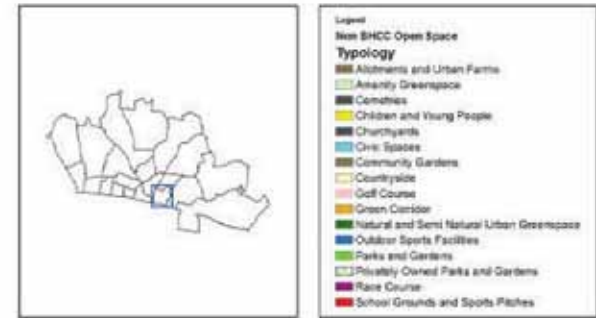


Scale: <b>1:8,000</b>	Map produced on <b>18/04/2011</b>	
--------------------------	--------------------------------------	--

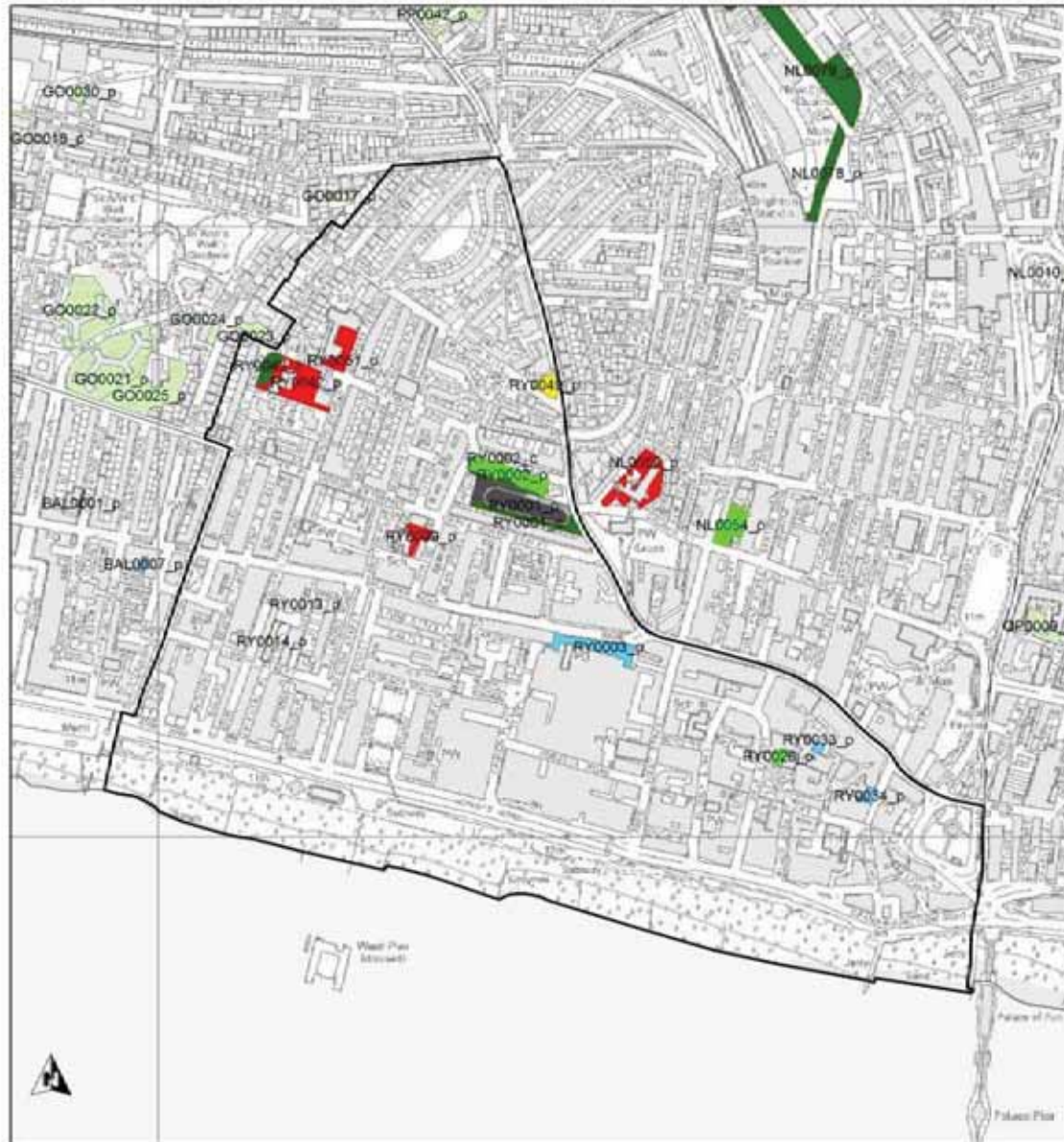


© Crown Copyright. All rights reserved. (100020999). (2011)

### Queens Park Ward

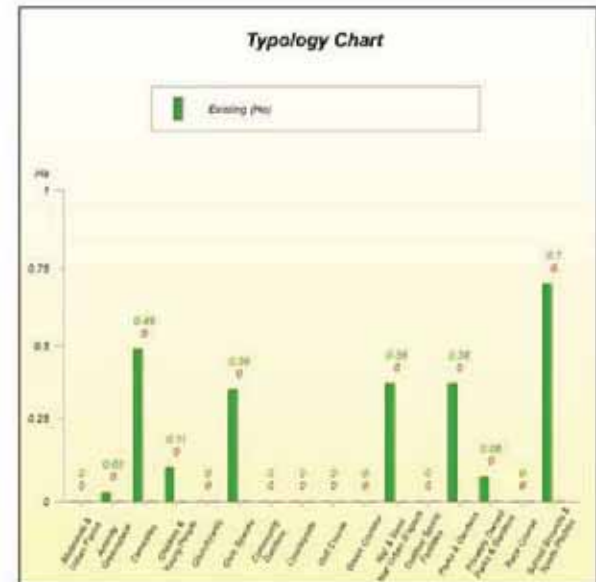
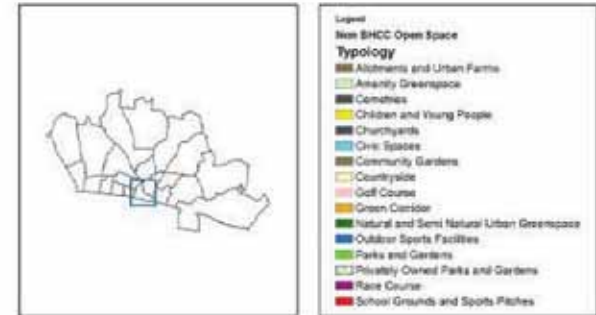


Scale: <b>1:6,000</b>	Map produced on <b>18/04/2011</b>	
--------------------------	--------------------------------------	--

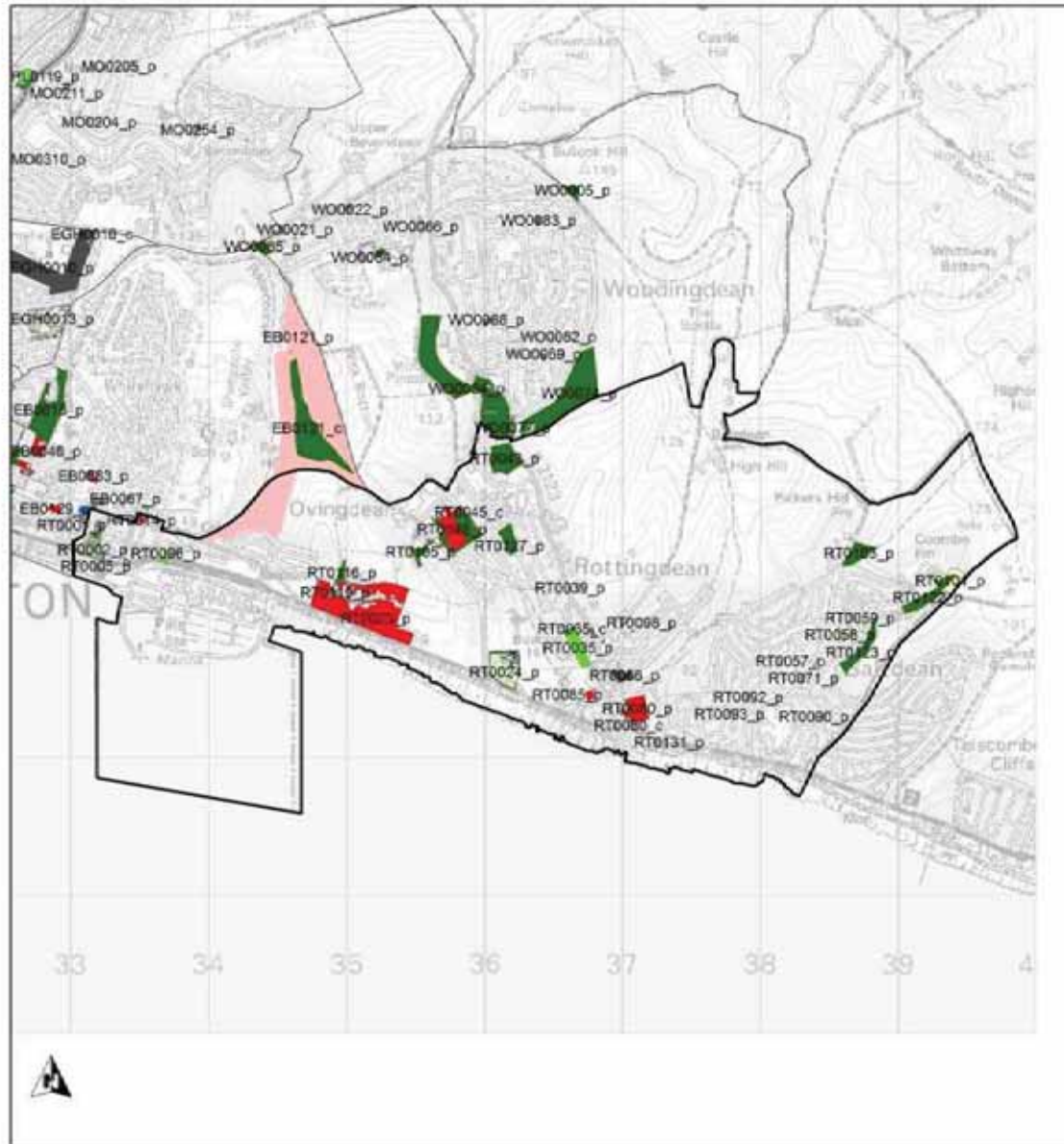


© Crown Copyright. All rights reserved. (100020999). (2011)

### Regency Ward

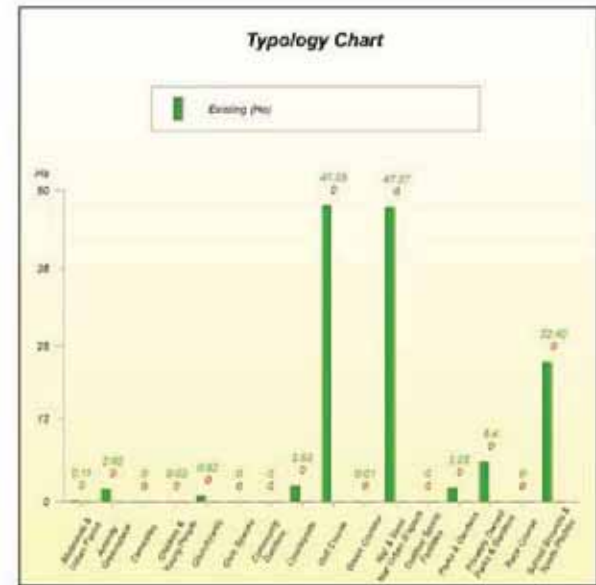
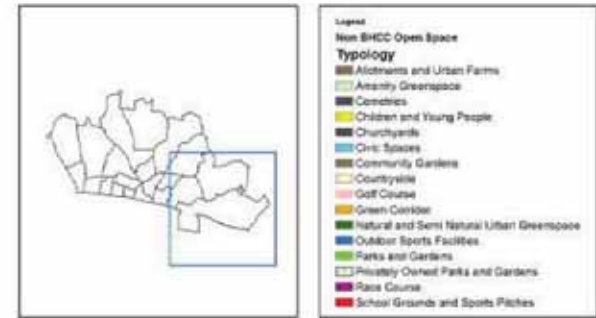


Scale: <b>1:7,000</b>	Map produced on: <b>18/04/2011</b>	
--------------------------	---------------------------------------	--



© Crown Copyright. All rights reserved. (100020999). (2011)

### Rottingdean Coastal Ward



The information in this chart differs to Appendix 3a&b as it refers to Non BHCC space only

Scale: <b>1:31,000</b>	Map produced on: <b>11/04/2011</b>	
---------------------------	---------------------------------------	--



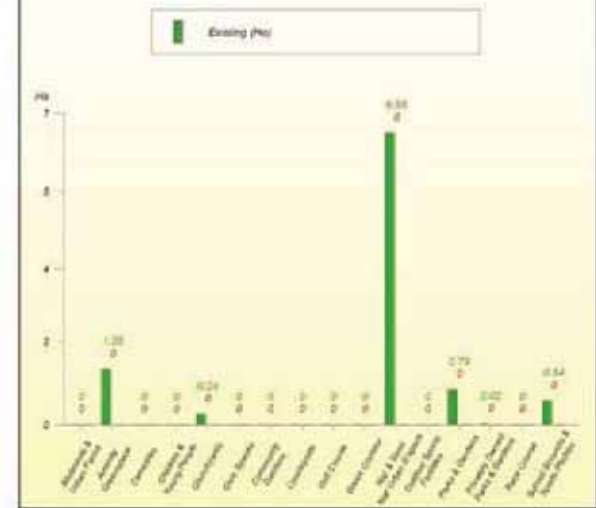


### South Portslade Ward



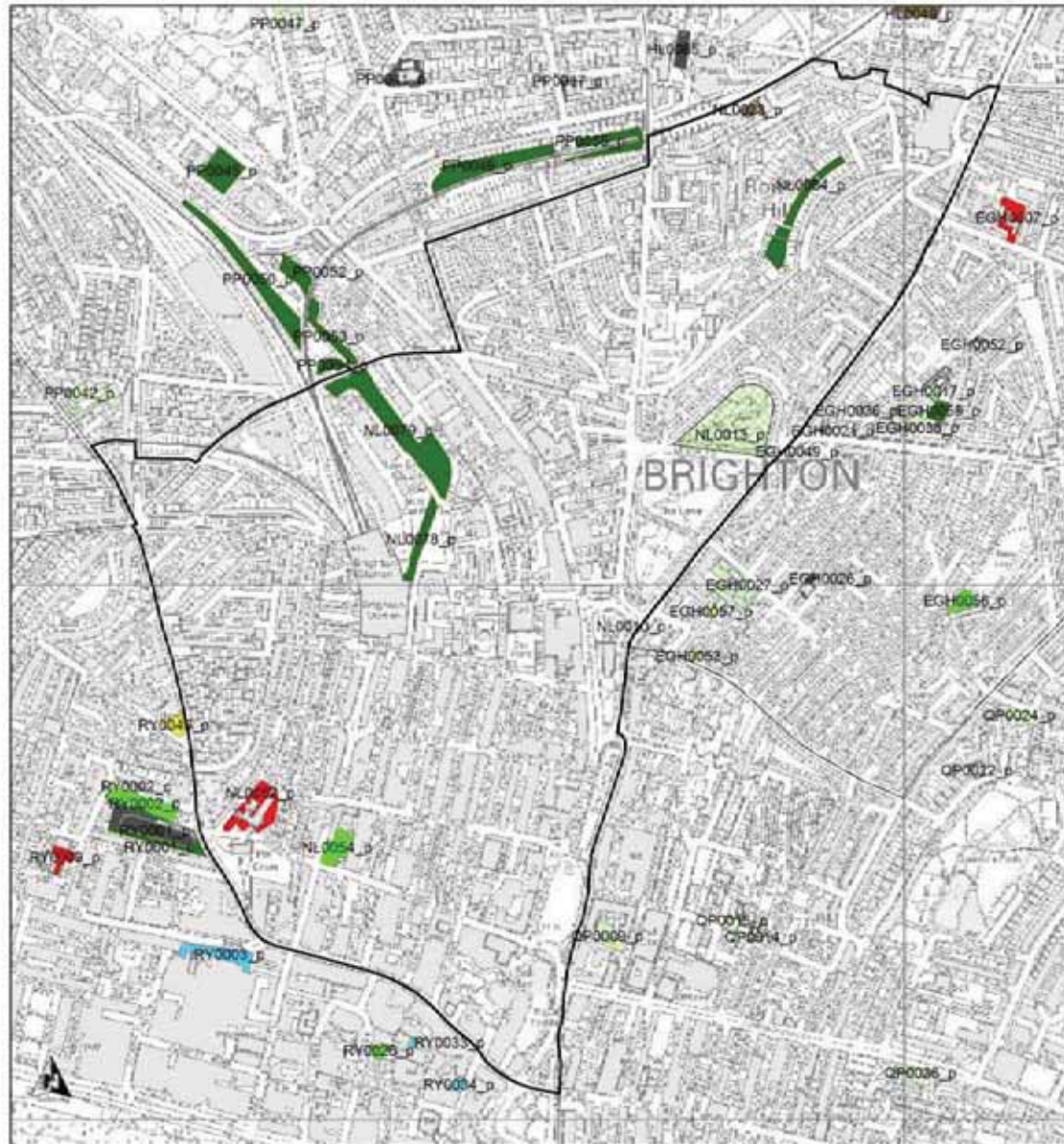
- Legend
- New BHCC Open Space
- Typology**
- Allotments and Urban Farms
  - Ancestry Greenspace
  - Cemeteries
  - Children and Young People
  - Churchyards
  - Civic Spaces
  - Community Gardens
  - Countryside
  - Golf Course
  - Green Corridor
  - Natural and Semi Natural Urban Greenspace
  - Outdoor Sports Facilities
  - Parks and Gardens
  - Privately Owned Parks and Gardens
  - Race Course
  - School Grounds and Sports Pitches

### Typology Chart



Scale: <b>1:10,000</b>	Map produced on: <b>18/04/2011</b>	
---------------------------	---------------------------------------	--

© Crown Copyright. All rights reserved. (100020999). (2011)



© Crown Copyright. All rights reserved. (100020999) (2011)

### St Peter's and North Laine Ward

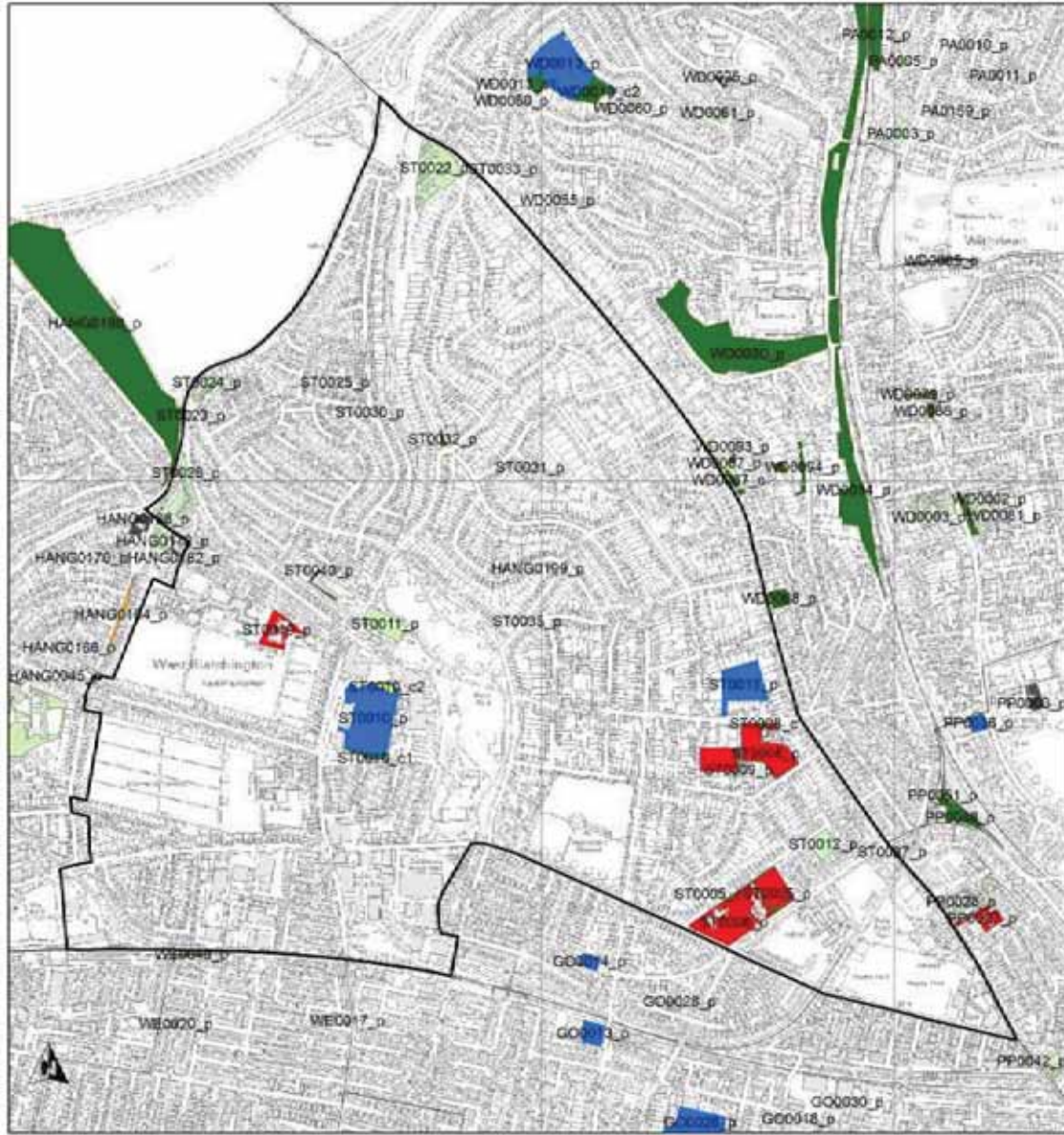


- Legend
- New BHCC Open Space
- Typology**
- Allotments and Urban Farms
  - Ancestry Greenspace
  - Canals
  - Children and Young People
  - Churchyards
  - Civic Spaces
  - Community Gardens
  - Countryside
  - Golf Course
  - Green Corridor
  - Natural and Semi Natural Urban Greenspace
  - Outdoor Sports Facilities
  - Parks and Gardens
  - Privately Owned Parks and Gardens
  - Race Course
  - School Grounds and Sports Pitches

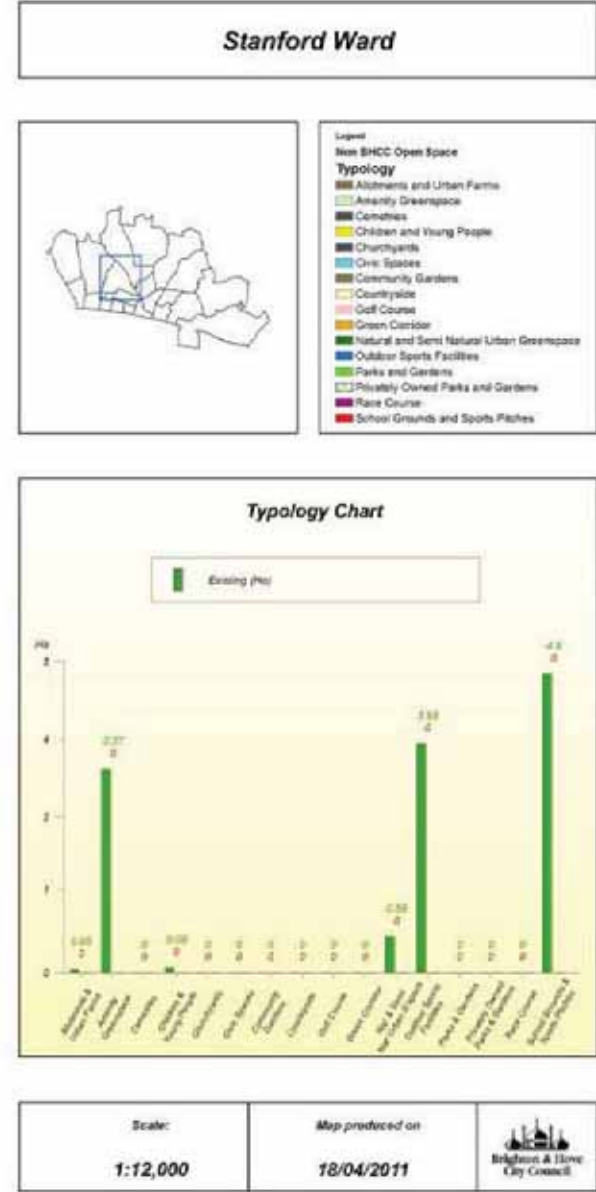
### Typology Chart



Scale: <b>1:8,000</b>	Map produced on: <b>18/04/2011</b>	
--------------------------	---------------------------------------	--

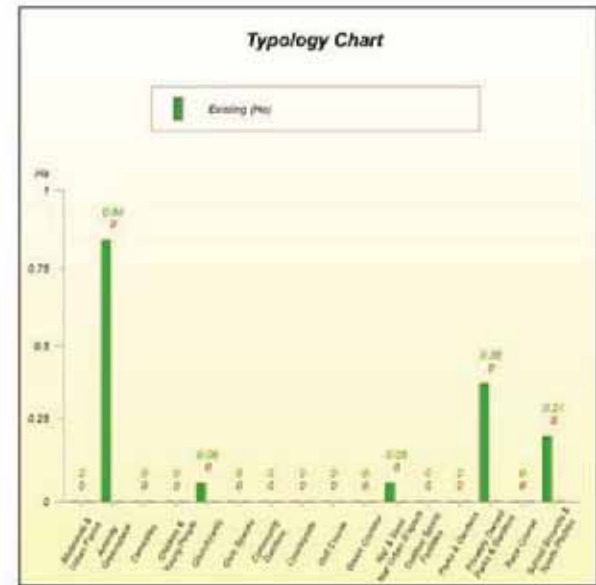
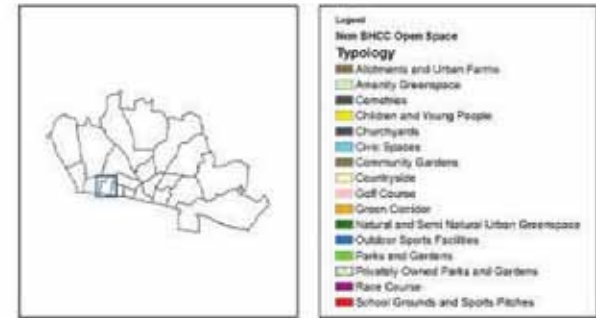


© Crown Copyright. All rights reserved. (100020999) (2011)



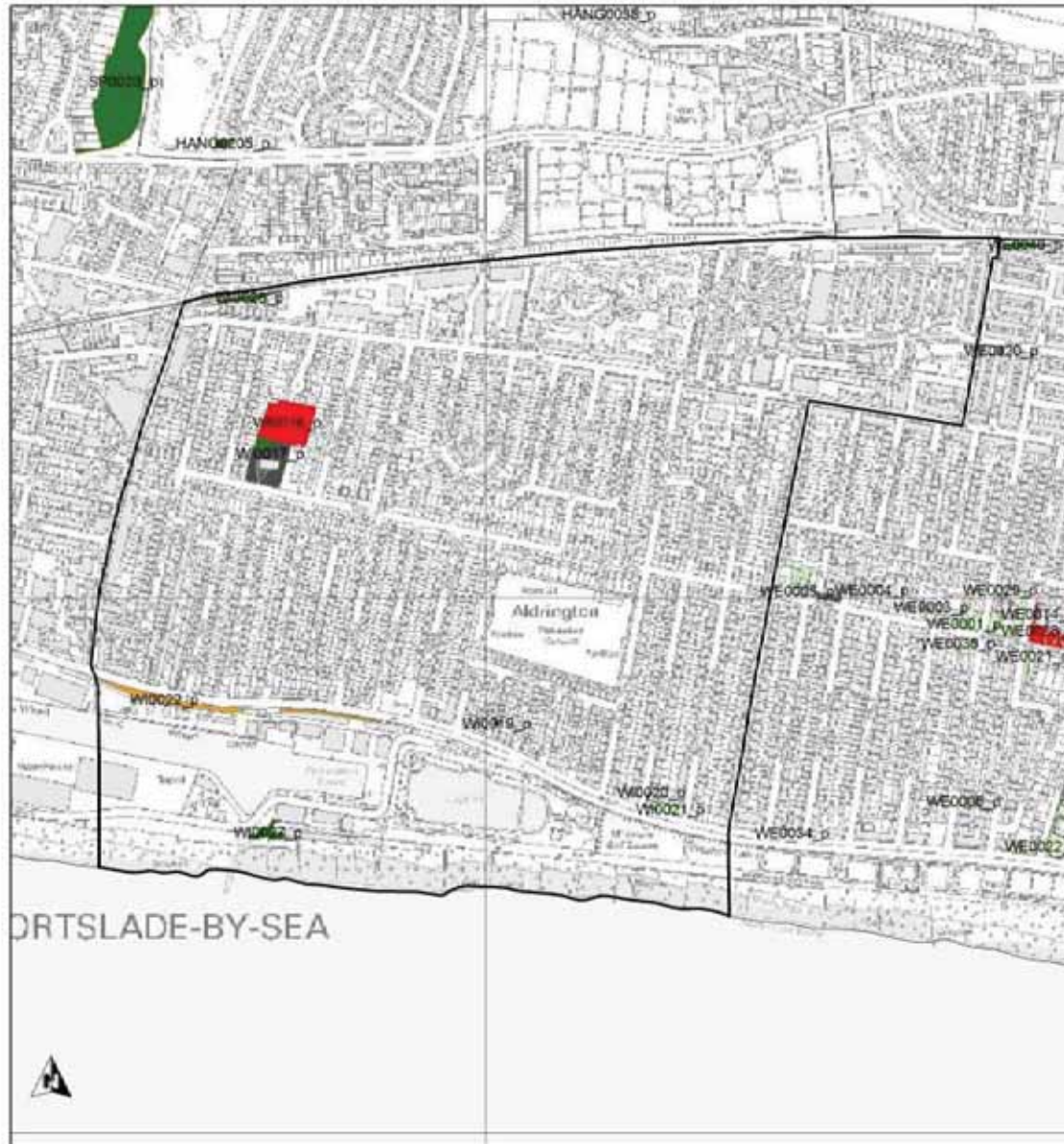


### Westbourne Ward

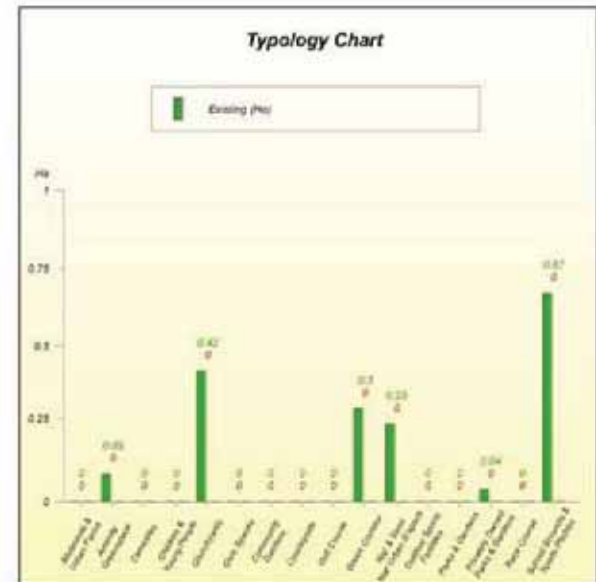
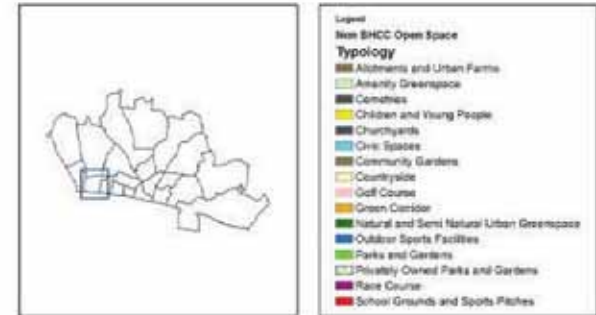


Scale: <b>1:6,000</b>	Map produced on: <b>18/04/2011</b>	
--------------------------	---------------------------------------	--

© Crown Copyright. All rights reserved. (100020999). (2011)

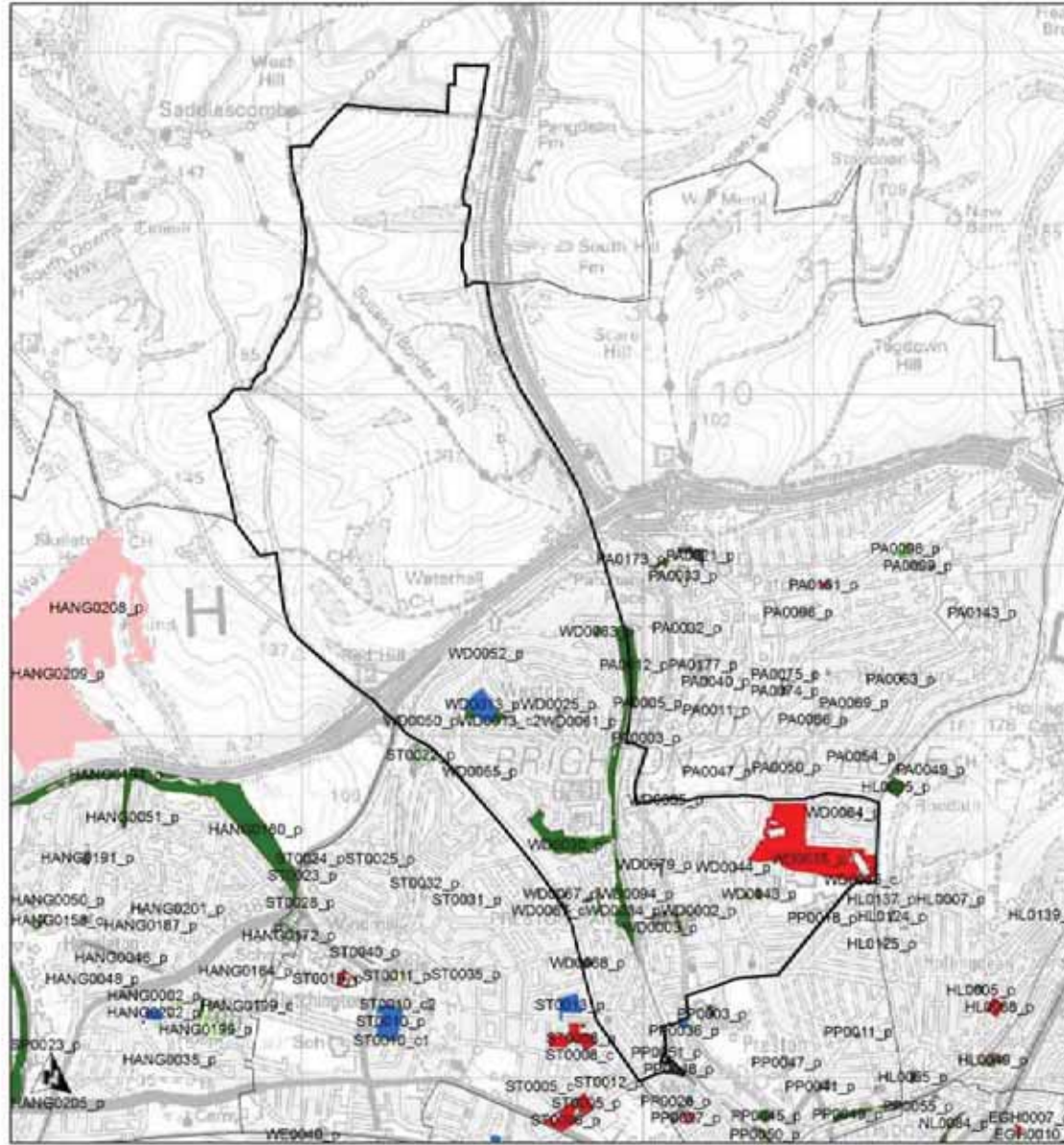


### Wish Ward



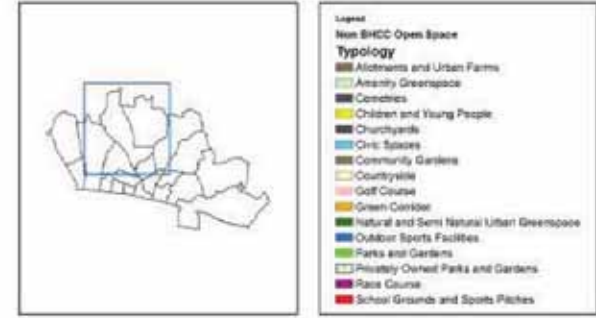
Scale: <b>1:8,000</b>	Map produced on: <b>18/04/2011</b>	
--------------------------	---------------------------------------	--

© Crown Copyright. All rights reserved. (100020999). (2011)



© Crown Copyright. All rights reserved. (100020999). (2011)

### Withdean Ward

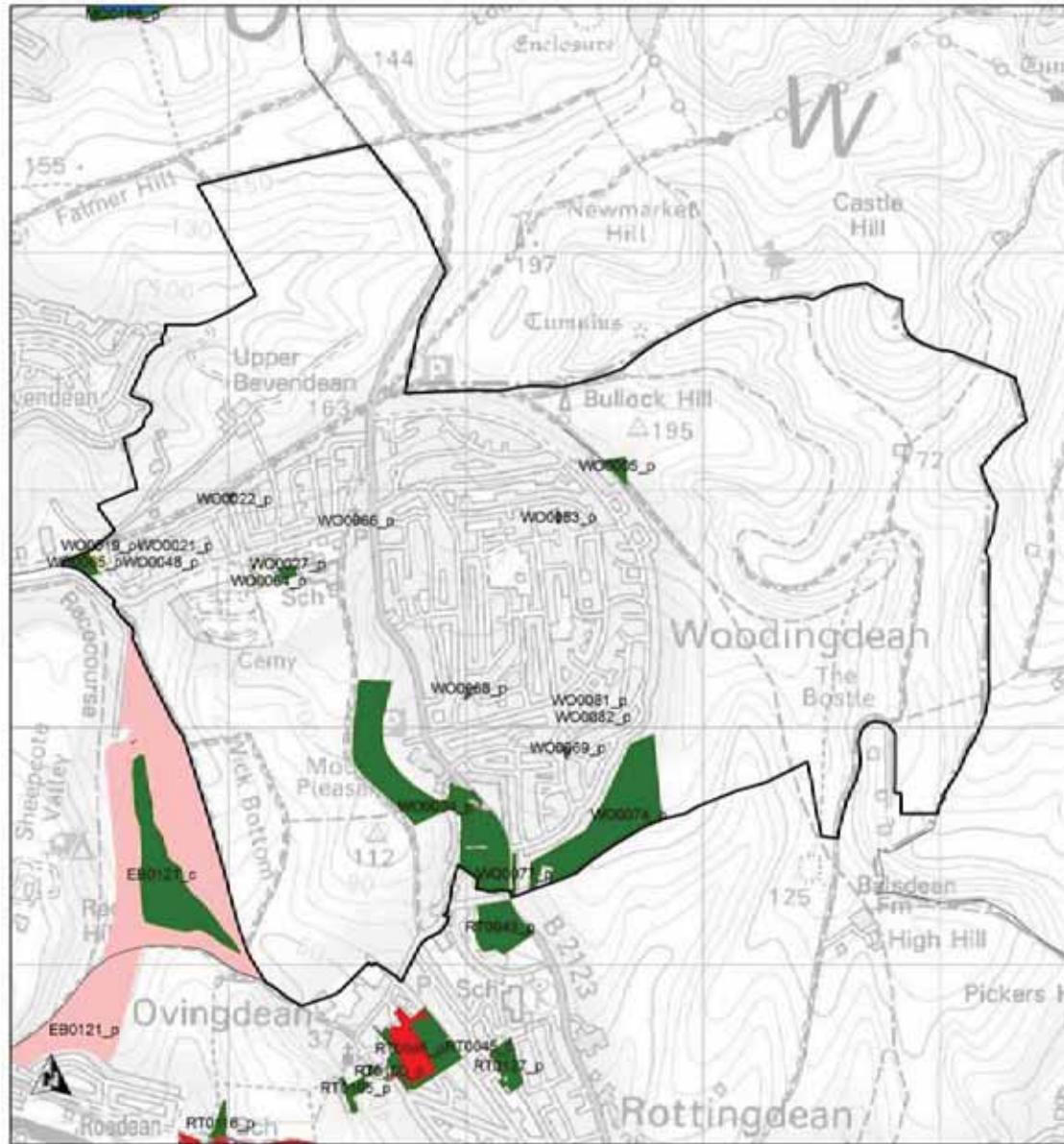


### Typology Chart



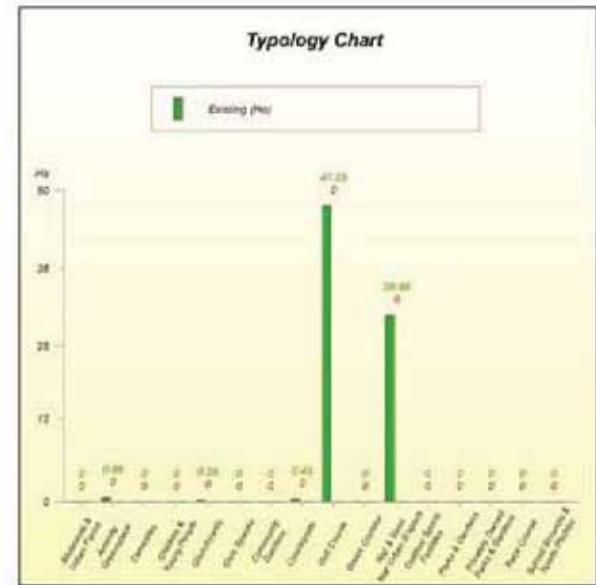
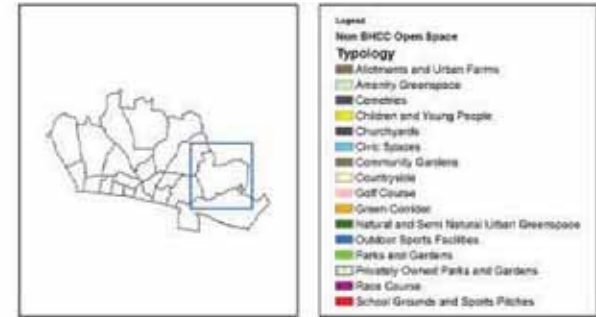
The information in this chart differs to Appendix 3a&b as it refers to Non BHCC space only

Scale:	Map produced on:	
1:25,000	11/04/2011	



© Crown Copyright. All rights reserved. (100020999). (2011)

### Woodingdean Ward



The information in this chart differs to Appendix 3a&b as it refers to Non BHCC space only

Scale: <b>1:18,000</b>	Map produced on: <b>11/04/2011</b>	
---------------------------	---------------------------------------	--