

# homing in

[www.brighton-hove.gov.uk/council-housing](http://www.brighton-hove.gov.uk/council-housing)

Spring 2023

A communal garden in Bevendean is flourishing thanks to local residents, find out more on page 9.



## In this issue

- Building more council homes
- Tackling anti-social behaviour
- Advice on damp and condensation
- Win tickets to Royal Pavilion exhibition



Brighton & Hove  
City Council

# Welcome to the spring issue of Homing In

Everyone should be able to live peacefully and feel safe in their homes and communities, and in this issue there's information about our new Housing Anti-Social Behaviour policy.

We've listened to residents and are strengthening and speeding up our response to anti-social behaviour as a result of your feedback. You can find out more about the policy on page 3.

We've also got updates on our work to provide more council homes, including the go ahead for more than 200 new homes and community facilities in Moulsecomb.

Plus there's information about our seniors housing schemes for people aged 55 and over, and possible financial incentives for residents downsizing from a family-size home into smaller accommodation.

As the cost of living crisis continues to affect households across the city, there's information about where to turn for advice and support (see page 6) and news of our furniture recycling project helping tenants in need.

With spring here, there's an example of a great communal garden created by residents and details of how to apply for Estate Development Budget funds for a community project in your area.

And there's a chance to win tickets to a coronation exhibition at the Royal Pavilion.

**Have a good spring!**



## New visitor parking permits



New visitor parking permits have been sent out to residents in blocks of flats with designated visitor parking bays.

The new-look permits have a fresh design, a different colour scheme and are larger, to ensure they can be clearly seen and help reduce misuse of visitor parking bays.

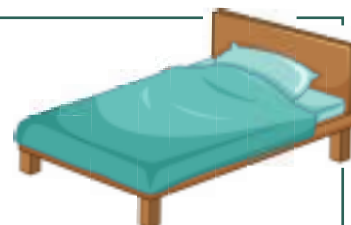
Residents can give the permits to visitors to use to park while visiting them, and should dispose of any old visitor permits as these are no longer valid.

The new permits apply to blocks that have off-street car parks attached, with dedicated parking spaces and visitor bays which are protected by parking enforcement.

They were sent to residents by registered post in February and early March.

For more information, contact Housing Customer Services, email [housing.customerservices@brighton-hove.gov.uk](mailto:housing.customerservices@brighton-hove.gov.uk) or call **01273 293030**.

## Do you have furniture for recycling?



**Our furniture recycling project helping tenants in need has seen a big increase in demand due to the cost of living crisis.**

If you have any unwanted furniture in good condition, it could make a real difference to people struggling with rising costs.

Sofas and beds (with fire safety labels still attached) are particularly needed, along with other household items.

In January and February this year the project provided 55 items of furniture to local people, compared with 13 during the same time last year.

If you have furniture to donate, please call the Estates Services Team on **01273 294769**.





# Tackling anti-social behaviour – improving our service to you



## We're introducing a new policy to tackle anti-social behaviour (ASB) affecting residents in council homes.

The policy was developed in response to tenant and leaseholder feedback, its aim is to improve our response to ASB.

The policy focuses on reducing harm for victims by preventing anti-social behaviour from occurring, and carrying out swift action where possible to resolve ASB when it does occur. It pledges to take a victim-centred approach and keep victims and witnesses updated on action taken to tackle ASB where possible.

Tenants and leaseholders helped shape the new policy, which was agreed by the Housing Committee in January. Thank you to everyone who gave their views and took part in the review of the policy.

Measures to improve our response to ASB include:

- A co-ordinated approach when anti-social behaviour affects the wider community, with many victims and/or more than one perpetrator
- An emphasis on partnership working with other council services, the police, and other interested parties to tackle problems
- Use of Community Protection Notices – these could be used to stop people carrying out ASB which affects the local community, such as playing loud music or regularly holding disruptive social gatherings in public areas on our estates
- Regular updates on what is being done to deal with anti-social behaviour, this will include publishing enforcement action where possible

If someone is suffering anti-social behaviour, we will seek to help them.

To report anti-social behaviour, please contact Housing Customer Services. Call **01273 293030** or email [housing.customerservices@brighton-hove.gov.uk](mailto:housing.customerservices@brighton-hove.gov.uk)

In an emergency phone 999 and ask for the police.



## Getting arty at Jasmine Court!

Residents at Jasmine Court seniors housing scheme enjoyed trying a range of different art techniques as part of a recent course.

The weekly art sessions at the scheme in Patcham (pictured) proved so popular more are being planned.

The art course was organised with funding from an Estate Development Budget (EDB) 'quick bid'. For information about applying for EDB funds, see page 9.





New homes in Victoria Road, Portslade

## 42 new homes in Portslade

**A development of 42 energy efficient new council homes has just been completed in Victoria Road, Portslade.**

The ground-breaking scheme is our most sustainable new council housing development to date.

A ground source heat pump system will provide heating and hot water for the homes, as part of our commitment to cut carbon emissions, and help residents manage their energy bills.

Solar panels will provide electricity for lighting in communal areas of the flats and for external lighting.

Other features include planted 'living' walls, bat boxes and bee bricks to encourage wildlife, and a communal garden for residents which will have fruit trees and a wild flower lawn area.

The development, called Jay Court and Perching Court, is made up of one, 2 and 3 bedroom flats which are being let to people on the council's housing register.

Work is also due to start on 4 new council flats in Frederick Street in the city centre, and 3 new houses in Rotherfield Crescent, Hollingbury this summer.

For more information about our New Homes for Neighbourhoods building programme, visit [www.brighton-hove.gov.uk/nhfn](http://www.brighton-hove.gov.uk/nhfn)

# New homes update



We're building and planning more council homes across the city, these are some of our current projects.

## Homes for Brighton & Hove

A development of new homes in Portslade is nearing completion.

The 104 homes in Wellington Road (pictured) will be the first delivered by Homes for Brighton & Hove, a partnership between the council and affordable housing provider, Hyde.

The development of energy-efficient one, 2 and 3 bedroom flats, includes 49 new council-rented homes, with the rest available through Hyde as shared ownership homes. It will be called Quay View.

The council homes will be let to people on the housing register at government defined social rents, making them some of the lowest rents delivered across the new council housing programmes so far.

Homes for Brighton & Hove is also building 242 low-cost homes in Coldean, which include 127 council-rented homes. The development in Coldean Lane is due to be completed this autumn.

For more information, visit [www.brighton-hove.gov.uk/hfbh](http://www.brighton-hove.gov.uk/hfbh)





## Go ahead for more than 200 new council homes in Moulsecoomb

Plans for 212 council homes and a new community hub in Moulsecoomb were approved by the Planning Committee in January.

The development will be one of the biggest new council housing projects in decades.

The homes and new community building will be built on land currently used by the Moulsecoomb north and south hubs, the 67 centre and surrounding area.

Services that could be located in the new community hub include a GP surgery, Moulsecoomb Library, adult learning, community café, and a new centre for youth services.

We've been discussing the proposals with local residents and community groups over the past few years. Thanks to everyone who gave us feedback and took part in 'planning for real' sessions.



Architect's image of the proposed Moulsecoomb housing and community hub development

We're currently working on the detailed designs and revising the timeline of when the work will begin. We'll continue to keep residents informed as work progresses.

For more information, visit [www.brighton-hove.gov.uk/mhchp](http://www.brighton-hove.gov.uk/mhchp)

## Transforming empty spaces

Residents have moved into 8 new council homes on the Bristol Estate in Brighton.

Former drying areas and bin rooms at blocks of flats on the estate have been transformed into a mix of studios, one and 2 bedroom flats.

The project is part of our Hidden Homes scheme, which is giving a new lease of life to empty or 'hidden' spaces within council-owned property.

## Buying back former council homes

We're also buying back former council homes sold under Right to Buy to provide more homes for people on the housing register.

If you own a former council home, you can make an offer to sell it back to us.

- If the home was bought from the council under Right to Buy in the last 10 years, you must offer it back to the council if you wish to sell it. This is known as the Right of First Refusal.
- If the home was bought under the Right to Buy over 10 years ago, you don't need to offer us first refusal, but you can still make an offer to sell it to us.

If you are interested in selling your home, visit [www.brighton-hove.gov.uk/home-purchase-policy](http://www.brighton-hove.gov.uk/home-purchase-policy), email [housing.strategy@brighton-hove.gov.uk](mailto:housing.strategy@brighton-hove.gov.uk) or call 01273 293055 to find out more.



## Social Housing Regulations



As you may be aware, the government is introducing a new Social Housing Regulation Bill, proposing new regulations for social housing.

The regulations set out 7 commitments which all social housing residents should expect:

1. To be safe in your home, to ensure every home is safe and secure.
2. To know how your landlord is performing, including on repairs, complaints and safety, and how money is spent, so you can hold us to account.
3. To have your complaints dealt with promptly and fairly, with access to a strong ombudsman who will give you swift and fair redress when needed.
4. To be treated with respect, backed by a strong consumer regulator and improved consumer standards for tenants.
5. To have your voice heard by your landlord, to give you the tools to ensure we listen.
6. To have a good quality home and neighbourhood to live in, keeping your home in good repair.
7. To be supported to take your first step to ownership, so it is a ladder to other opportunities, should your circumstances allow.



We are working to ensure we are meeting these commitments. We'll keep you updated on our progress through Homing In.

## Cost of living support

Help and advice is available if you are struggling with the cost of living.

Visit [www.brighton-hove.gov.uk/cost-living-support](http://www.brighton-hove.gov.uk/cost-living-support) for the latest information on help available, including how you can get advice and support on food, money, and energy bills.

If you don't have access to the website, call the council's Community Hub on **01273 293117** (option 1 if you receive benefits, or option 2 for households not in receipt of benefits). The phonenumber is open Monday to Friday from 10am to 4.30pm.

### Paying your rent

If you are having problems paying your rent, please call the Housing Income Management Team on **01273 293224** or email [housing.incomemanagement@brighton-hove.gov.uk](mailto:housing.incomemanagement@brighton-hove.gov.uk)

### Debt advice

**Money Advice Plus** 0800 988 7037  
[www.moneyadviceplus.org.uk](http://www.moneyadviceplus.org.uk)

**Citizens Advice** 0300 330 9033  
[www.cabrightonhove.org](http://www.cabrightonhove.org)

### Help to buy fruit, vegetables, milk and vitamins

The NHS Healthy Start scheme provides up to £4.25 a week towards the cost of fruit, vegetables, milk and vitamins to families of children under 4 on a low-income, and people who are pregnant.

Anyone eligible can apply for a prepaid card that can be used in shops.

Find out more, check if you're eligible and apply at [www.healthystart.nhs.uk](http://www.healthystart.nhs.uk) or call **0300 330 7010**.



# Making the move to seniors housing

If you are aged 55 or over, our seniors housing schemes could be of interest to you.

The council has 22 seniors schemes across the city, ranging from small schemes with around 30 residents to the largest with more than 100.

Residents have their own flats and independence. Advice is available from a scheme manager during the day and a 24-hour emergency alarm system provides round the clock reassurance. Pets are welcome (with permission) at all schemes.

Each scheme has a communal lounge and garden and some schemes have regular activities such as art groups, fitness classes and music sessions.

Friends and family are, of course, welcome to visit and many schemes have guest rooms available for short stays (additional charge).

Downsizing can reduce your outgoings and you may be eligible for a transfer incentive payment, see page 8.

Moving home is a big decision and if you're interested in moving to seniors housing, there's help available.



Elwyn Jones Court seniors housing scheme in Patcham

## Find out more

Visit [www.brighton-hove.gov.uk/seniors-housing](http://www.brighton-hove.gov.uk/seniors-housing), email [seniorshousing@brighton-hove.gov.uk](mailto:seniorshousing@brighton-hove.gov.uk) or ring 01273 293030 and ask for a call back from the seniors housing team.

## Fundraising for Martlets Hospice

A coffee morning at Evelyn Court seniors housing scheme in Windlesham Close, Portslade raised **£570 for Martlets Hospice.**

Friends Jean Carter, from Evelyn Court, and Kay Shaw, who lives nearby, organised the event.

The pair are keen supporters of the hospice and it was their second coffee morning for the Martlets. Residents at Evelyn Court and friends from the local community supported the event.

Jean said: "We raised £500 at our first coffee morning, so we were pleased to raise even more this time."

Residents at Evelyn Court organise regular coffee mornings, clubs, activities and social events and welcome people from the local community. To find out more, call 01273 293395.



Jean and Kay with a certificate from the hospice

**"The best move I've ever made"**

Mary Pope moved from a 3 bedroom council home to a studio flat at Rose Hill Court seniors housing scheme in Brighton last year.

Mary said: "I think it's the best move I've ever made. I feel very relaxed here and I'm nearer my friends and the shops.

"I was in a big flat before and I didn't need all that space once my family left home. Trying to keep it clean was becoming too much for me, and I wouldn't have been able to afford to heat it this winter."

She added: "I thought long and hard before moving, but I don't regret it a bit.

The help I got from housing staff was absolutely amazing, they arranged the removal people and the scheme manager helped me settle in. I can't praise them enough."

## Transfer Incentive Scheme

If you're a council tenant downsizing from a family-sized home into smaller accommodation, including into seniors housing, you may be eligible for a cash payment of up to £2,500.

Our Transfer Incentive Scheme helps to free up larger homes for families who need them.

Incentives are also available for tenants moving from a property adapted for accessibility that they no longer need.

To find out more, visit [www.brighton-hove.gov.uk/tis](http://www.brighton-hove.gov.uk/tis) or email [transferunderoccupying@brighton-hove.gov.uk](mailto:transferunderoccupying@brighton-hove.gov.uk) or call 01273 294400 (option 1) or 294496.



### Dance celebration

A Brazilian dance group added a splash of colour at a party at Brooke Mead Extra Care housing scheme in Albion Street, Brighton (pictured). Residents joined in the fun and dancing during a Christmas celebration. The dance group's visit was organised by South East Dance which is based nearby.

Photo: South East Dance

# Advice on damp and condensation



**Damp and condensation can occur in properties for a number of reasons and can affect your wellbeing and how comfortable you are in your home.**

Below is some useful information, tips and advice on damp and condensation and steps you can take to reduce the risks in your home.

## Damp

Dampness in a building is generally caused by either:

- Rainwater soaking into the walls or roof leaks
- Leaking pipes or leaking appliances such as washing machines
- Condensation caused by everyday activities

## Identifying condensation



Dampness from rainwater getting in or leaking pipes usually leaves a tidemark on the surface of the wall or ceiling.

Condensation can often be identified by the presence of black mould in areas prone to condensation such as:

- On external walls
- Behind furniture
- Around windows
- Inside cupboards – or in areas with reduced ventilation /air flow
- On ceilings in bathrooms or on ceilings next to external walls

For more information, visit [www.brighton-hove.gov.uk/condensation-damp-and-mould-your-home](http://www.brighton-hove.gov.uk/condensation-damp-and-mould-your-home)

## Reducing condensation

Activities such as cooking, showering and drying clothes indoors can produce up to 20 pints of water vapour each day.

It's important to keep your home well ventilated to remove this moisture before it forms condensation.

Tips to help reduce condensation:

- Where possible, dry clothes outside or in a well-ventilated room with an open window
- Avoid drying clothes on radiators if possible
- If using a tumble dryer, make sure it is vented to the outside
- Cover pans when cooking or simmering, and don't leave kettles boiling
- Where fitted, use an extractor fan in the kitchen and bathroom
- Regularly wipe down surfaces where moisture settles such as windows affected by condensation
- Avoid blocking airbricks or vents in the wall
- A moisture absorber or similar from a DIY shop can also help, especially within cupboards or wardrobes where increasing ventilation is not possible
- Walls and window frames can be washed down with a weak household bleach solution to kill and remove mould.



# Growing success of communal garden

## A communal garden is flourishing at a block of flats in Bevendean.

Residents at Hornby Place got permission and funds to fence off land around the flats about 15 years ago, creating a safe garden for children to play.

Since then they have added vegetable plots and planted fruit bushes and trees, and the garden (pictured) has become a popular spot for relaxing and socialising.

Now they have extended the garden after applying for funds from the Estate Development Budget (EDB) to fence off an additional section of grass by the flats.

They also added compost bins with EDB funding and are planning to provide a new path to improve access in the garden.



Residents tending the garden at Hornby Place

Resident Michelle Guyatt said: "The garden has brought everybody together.

"We grow all sorts of fruit, vegetables and herbs and everybody has a sense now that it's our own garden. We enjoy being out there whatever the weather.

"It's a nice place to get together with neighbours."



## Do you have an idea for improving your estate?

If so, you can apply for funds from the Estate Development Budget.

To find out more, visit [www.brighton-hove.gov.uk/edb](http://www.brighton-hove.gov.uk/edb) or contact the Community Engagement Team. Call 01273 291211 or 291518, or email [communityengagement@brighton-hove.gov.uk](mailto:communityengagement@brighton-hove.gov.uk)

## Get involved in festival art

### Artists will be working with local communities to create artworks as part of Brighton Festival.

Three Artist in Residence projects will form part of the festival's Our Place community events.

Photographer Vivek Vadoliya will work with young people in east Brighton on a project exploring identity.

Artist Boudicca Collins (pictured) will be collaborating with local residents and the Hangleton & Knoll Project to create a mural, and arts organisation East Side Print will work with the community in Moulsecoomb and Bevendean on a project celebrating the cultural diversity of the area.

Brighton Festival runs from 6 to 28 May. To find out more, visit [www.brightonfestival.org/getting-involved/our-place](http://www.brightonfestival.org/getting-involved/our-place)



Photo: Brighton Festival



# News from the Leaseholder Action Group

The Leaseholder Summit took place in January at Hove Town Hall.

We were very pleased to see so many of you there in person, and so many more joining us on Zoom. This was our first real-life gathering since the AGM in April 2019, and it was great to be back together again.

We welcomed Councillor Siriol Hugh-Jones, Co-chair of the council’s Housing Committee, and Rachel Sharpe, Executive Director for Housing, Neighbourhoods and Communities, who introduced themselves and gave us an overview of their work for us.

We heard from council staff about housing department plans for the year, major and planned works, plans for retrofitting homes with environment-friendly heating systems, also about methods for phasing payments for works to our blocks, and about the council’s new policy for tackling anti-social behaviour.

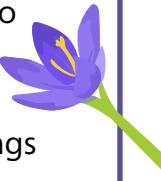
The summit also contained the formal annual meeting of the Leaseholder Action Group (LAG), at which we heard the chairperson’s report on recent events, approved our revised Terms of Reference, and elected the chairperson and committee for the coming year.

The new committee will be meeting soon to plan our priorities and activities for the year. These are likely to include an event soon looking at plans for the circular economy – involving repairing and recycling, not always replacing. We will also be picking up various issues raised at the summit and working to get them resolved.

All our committee meetings and other events are open to all leaseholders – so please do come along and join us!

To contact the Leaseholder Action Group, phone **01273 605225** (mornings or evenings best), email [lag@clarend.com](mailto:lag@clarend.com) or look for B&H Leaseholders Action Group on Facebook. We are hoping to increase our social media presence – if you can help with that, please get in touch.

Rosemary Johnson  
LAG Chairperson



## Voter photo ID required to vote at elections

Local elections for the city council take place on Thursday 4 May and, for the first time, you will need to show photo identification (ID) to vote at a polling station.

This is a new requirement introduced by the government and these are the forms of ID you can use.

- UK passport
- A passport issued by a EEA (European Economic Area) state or a Commonwealth country
- EEA identity card
- Driving licence (including provisional licence)
- A biometric immigration document
- Older person’s bus pass
- Disabled person’s bus pass
- A blue badge
- A PASS identity card

If you don’t already have photo ID, you can apply for a free Voter Authority Certificate (VAC) at [www.gov.uk/apply-for-photo-id-to-vote](http://www.gov.uk/apply-for-photo-id-to-vote) or email [electors@brighton-hove.gov.uk](mailto:electors@brighton-hove.gov.uk) or call **01273 291999** to be sent a paper copy.

The deadline to apply is 5pm on 25 April, but please apply sooner if possible.





## Tax credits ending soon

If you are currently claiming tax credits, please be aware that these are going to end and you will need to claim **Universal Credit (UC) instead.**

The Department for Work and Pensions will write to you to let you know when your tax credits are ending and that you need to make a claim for UC – it's vital to claim as you will not be switched to UC automatically.

The timescale for this depends on which benefits you currently receive.

- If you receive only tax credits and no other benefit, the change will take place sometime this year and it is important to seek advice now, so you understand what you are entitled to when your tax credit ends.
- If you receive tax credits and another benefit, such as housing benefit, the change will take place in 2024.
- For some people who receive tax credits and Employment and Support Allowance, the change will not take place until 2028.

It's important to get advice in advance of the change, so that you are ready to claim and don't miss out on help with your rent and living costs. **You can call the Welfare Rights Team advice line Monday to Wednesday from 10am to 1pm on 01273 291116.**

To find out more, visit [www.understandinguniversalcredit.gov.uk](http://www.understandinguniversalcredit.gov.uk) and follow the links to tax credit information.

## Grants for BME community groups



Projects helping to highlight local black history are among community groups awarded grants from the council's Engagement Fund for BME communities in the city.

The Engagement Fund aims to support projects that improve the wellbeing of BME residents and promote fairness. Groups can apply for grants of up to £2,000.

Nine groups received grants in the latest round of funding, including:

**Banyan Tree Theatre Group**, a group led by BME women, will use funding to deliver a series of workshops including family friendly singing sessions as part of a 'Songs and Sounds of Healing' project.



**The Open Minds Project** will use a grant to run Black history guided walking tours in the Patcham, Elm Grove and West Pier areas. Pictured are Agbota and Grace from the project.

**Euro-Mediterranean Resources Network** will use the grant to provide skills training to 12 BME volunteers to research and develop content for community radio and television, highlighting BME cultural heritage.

**The Black & Minority Ethnic Community Partnership 50+** Group will use the grant for running costs and group activities.

Other groups which received grants are: **Women of Colour Brighton group, Ohisama Ahaa, Brighton Black Anti Racism Community Organisation (BARCO), Brighton Multicultural Women's Cycle Club and A Seat At The Table.**

The Engagement Fund is part of the Communities Fund which supports local community groups, voluntary organisations and not-for-profit social enterprise. For more details visit [www.brighton-hove.gov.uk/communitiesfund](http://www.brighton-hove.gov.uk/communitiesfund)

# How we've been doing

October to December 2022

Here are the highlights of our performance over the last quarter...



## Repairs and improvements

The proportion of 'Decent Homes' has slightly increased, from 96.2% to 96.8%. The Repairs Helpdesk answered an average of 316 phone calls per working day, and we completed 147 repairs per working day (a total of 8,504 during the quarter, of which 3,490 emergency and 5,014 routine).



## Customer services

Housing Customer Services dealt with an average of 87 phone calls and 102 emails per working day. The most common queries were about resident parking, tenancy issues and anti-social behaviour.



## Moving home

We let 141 homes, down from 172 during the previous quarter, and have reduced the number of empty homes from 153 to 144.



## Estates Service

The team completed 1,513 mobile response jobs, including lock changes and light bulb replacements, and 495 jobs to move bulky items.



## Tenancy management

We've worked on 66 cases to support vulnerable tenants, including 19 tenancy sustainment cases involving help with arranging benefit claims, repairs, and care packages.



## Anti-social behaviour

Our officers supported residents with 110 new reports of anti-social behaviour.



## Rent collection and current arrears

We've collected 94.12% of rent despite the challenge of 31% of households having someone on Universal Credit.

## Feedback about housing services

**We want to know what you think about the service you receive so that we can build on our successes and make improvements where they are most needed.**

Please send your compliments and complaints to the council's Customer Feedback Team at [CustomerFeedback@brighton-hove.gov.uk](mailto:CustomerFeedback@brighton-hove.gov.uk) or on 01273 291229.

If you do make a complaint your right to receive a good quality service will not be affected.

The Housing Ombudsman service can give independent advice to tenants on how to make complaints, and options available if you have exhausted the council's complaints procedure and remain unsatisfied with the outcome.

For details, visit:

[www.housing-ombudsman.org.uk](http://www.housing-ombudsman.org.uk)

email [info@housing-ombudsman.org.uk](mailto:info@housing-ombudsman.org.uk)

or call 0300 1113000.







## Volunteers help to create new woodland

Thousands of tree whips are being planted across the city to help regenerate woodlands devastated by ash dieback.

A total of 2,640 tree whips were planted in Coldean Woods this year, plus 3,500 at Jevington Drive woods and Wild Bank Woods in Bevendean.

A tree whip is an unbranched young tree, which is planted with a wooden stake for support.

Planting has also been carried out in Woodingdean, Moulsecomb, Westdene, Wild Park, Coney Wood, Abinger Woods, and the 'Three Cornered Copse' in Hove.

In total 17,500 tree whips are being planted this year and more next year.

A range of species is being used including oak, hazel, and wild cherry.

Residents in the CityParks Ranger Volunteers group are helping. Volunteer Ian Ferguson said: "It's been great helping out with the tree planting, getting involved with conservation and feeling like you are helping to make a difference locally."

If you are interested in volunteering with conservation projects in the city's parks and open spaces, email [cityparks.volunteers@brighton-hove.gov.uk](mailto:cityparks.volunteers@brighton-hove.gov.uk)

For more information about the ash dieback replanting plan, visit [www.brighton-hove.gov.uk/ash-dieback](http://www.brighton-hove.gov.uk/ash-dieback)

# Kids travel free!



## Free bus travel and 50p fares for young people under 20

Younger passengers using buses across the city can benefit from cheaper fares until 2025.

Up to 4 children or young people (aged 19 or under) can travel free at any time (excluding night journeys) when accompanied by an adult.

Unaccompanied children or young people (aged 19 or under) can travel for 50p at off peak times (after 6pm on school days), and any time (excluding night journeys) on Saturdays, Sundays, public holidays and school holidays.

The fares apply on all bus operators in the city and are part of the city's Bus Service Improvement Plan, which aims to encourage more people to travel by bus, increase passenger satisfaction, and improve reliability. For more information, visit [www.brighton-hove.gov.uk/bsip](http://www.brighton-hove.gov.uk/bsip)

## More buses for Bristol and Meadowview Estates

More buses are linking residents from the Bristol and Meadowview Estates with the city centre and local hospitals.

Additional 37 and 37B services operated by Compass Travel are running on Sundays, providing the same daytime level of service as on weekdays. There have also been some minor weekday timing changes to improve reliability.

The changes were introduced in January as part of the Bus Service Improvement Plan.



Thousands of local schoolchildren will take part in the Children's Parade on 7 May to mark the start Brighton Festival. The parade starts in Jubilee Street at 10.30am.

## Dates for your diary

### Area Panels

Area Panel meetings are a chance for residents to meet council officers and councillors to ask questions, share their views, and work with the council to improve housing services.

At the time of going to print, dates for the next round of Area Panel meetings were still being finalised.

The dates will be published on the resident involvement diary at [www.brighton-hove.gov.uk/ri-diary](http://www.brighton-hove.gov.uk/ri-diary) once they are confirmed, or you can contact the Community Engagement Team. Email [communityengagement@brighton-hove.gov.uk](mailto:communityengagement@brighton-hove.gov.uk) or call 01273 291211 or 291518.

### City events

**Brighton Marathon 2 April**

**Brighton Festival 6 to 28 May, various locations**

**Brighton Fringe 5 May to 4 June, various locations**

**London to Brighton Bike Ride 18 June**

Find out about forthcoming events in the city at [www.visitbrighton.com/whats-on](http://www.visitbrighton.com/whats-on)

If you have an event you'd like us to promote, please email [homingin@brighton-hove.gov.uk](mailto:homingin@brighton-hove.gov.uk) or call Housing Customer Services on 01273 293030.


## Marking the coronation

**The Coronation of King Charles III will take place on 6 May.**

A display of pennant shaped portraits of the King made by local schoolchildren to celebrate the coronation will be on display at Hove Museum & Art Gallery in New Church Road from 5 May – 4 June.

Visit [brightonmuseums.org.uk](http://brightonmuseums.org.uk)

If your street or resident group is holding a party to mark the occasion and would like to be featured in the next issue of Homing In, let us know. Please email [homingin@brighton-hove.gov.uk](mailto:homingin@brighton-hove.gov.uk)



**TAKEPART**

TAKEPART Festival is back from Saturday 17 until Sunday 25 June.

Throughout the week there will be free classes, performances, and workshops to showcase the sport, dance, exercise and activities available in the city. People of all ages and abilities can try something new, have fun or take a step towards a healthier you.

The festival starts with a free event at the Level on Saturday 17 June from 12 noon to 5pm. Find out more at [www.brighton-hove.gov.uk/takepart](http://www.brighton-hove.gov.uk/takepart) or phone 01273 294589 or pick up a programme from libraries and community venues from May.

## News from the Hangleton and Knoll Project



**The Hangleton & Knoll Project**  
Working for a better community

Hangleton and Knoll Community Action is the Local Action Team for the area.

Quarterly meetings are held to discuss issues affecting the community, including, anti-social behaviour, crime, and housing. The next meeting is on **14 June** at 10.30am at St Richard's Community Centre, Egmont Road, Hove. For details, call 01273 410858 or email [claire.johnson@hkproject.org.uk](mailto:claire.johnson@hkproject.org.uk)



# Win tickets to Royal Pavilion coronation exhibition

Enter our free draw for a chance to win a family ticket (for 2 adults and 2 children) to a new exhibition at the Royal Pavilion.

'A Right Royal Spectacle: The Coronation of George IV' celebrates the accession to the throne by one of the most extravagant British kings.

The exhibition includes pictures, costumes, documents and objects from George IV's spectacular coronation, displayed in the lavish surroundings of the Royal Pavilion.



Image: Brighton & Hove Museums

Send your answers by email to [homingin@brighton-hove.gov.uk](mailto:homingin@brighton-hove.gov.uk) or post to Homing In competition, Performance & Improvement, Housing Centre, Unit 1, Fairway Trading Estate, Eastergate Rd, Brighton BN2 4QL. Please include your name, address, postcode and phone number.

'A Right Royal Spectacle: The Coronation of George IV' opened on 11 March and runs until 10 September. For more information, visit [brightonmuseums.org.uk](http://brightonmuseums.org.uk) or call 03000 290900.

Simply answer the following questions, based on information in this issue:

- How many new council homes are going to be built in Moulsecoomb?
- How many seniors housing schemes does the council have across the city?
- What is the name of the Royal Pavilion coronation exhibition?

The closing date for entries is 1 May 2023.

The winner will be contacted and their name published in the next issue of Homing In. The competition is open to all households who receive Homing In by email or post.

## Congratulations!

Thanks to everyone who entered our winter draw to win a year's membership to enjoy activities at local leisure centres. The winner was Maggie Morlen from Hove.

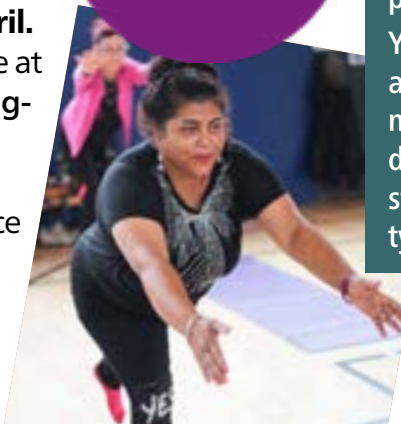
## Stay strong, steady and independent

Reduce your risk of falls with just 15 minutes of strength and balance activity a couple of times a week.

To help you find an activity that can support you and that you enjoy, there's a 2 week programme of taster sessions and events for anyone aged 50+ in the city.

Stay Strong, Stay Steady, Stay Independent runs from **Monday 17 to Sunday 30 April**. You can see the full list of activities available at [www.brighton-hove.gov.uk/stay-strong-events](http://www.brighton-hove.gov.uk/stay-strong-events) or pick up a programme from a library near you.

You can also contact the Ageing Well service on 01273 322947 for more information.



## NHS Health Checks

If you are aged between 40 and 74 and you've been offered a free NHS Health Check, please make sure you book it in.

It involves a few questions, tests to assess your risk of serious health problems and measurements.

You'll be given personalised advice and offered support if you need it to help lower your risk of developing diabetes, heart disease, stroke, kidney disease and certain types of dementia.

## Useful contacts

### Housing Customer Services

housing.customerservices@brighton-hove.gov.uk  
01273 293030

### Repairs Helpdesk

Report online at [www.brighton-hove.gov.uk/repairs](http://www.brighton-hove.gov.uk/repairs)  
0800 052 6140 (local line 01273 294409)

### Housing Income Management Team

housing.incomemanagement@brighton-hove.gov.uk  
01273 293224

### Housing Benefit

housing.benefits@brighton-hove.gov.uk  
01273 292000 or 01273 290333 for people  
with speech or hearing difficulties

### Community Engagement Team

For information about tenant and leaseholder groups  
communityengagement@brighton-hove.gov.uk  
01273 291518 or 291211

### Access Point for adult social care

AccessPoint@brighton-hove.gov.uk  
01273 295555

### Noise Nuisance

[www.brighton-hove.gov.uk/noise](http://www.brighton-hove.gov.uk/noise)  
01273 294266 or 01273 293541 for out of hours

## Other useful contacts

### Moneyworks Brighton & Hove

[www.advicebrighton-hove.org.uk](http://www.advicebrighton-hove.org.uk)  
0800 9887037 or 01273 809288

### Citizens Advice Bureau

[www.cabrightonhove.org](http://www.cabrightonhove.org)  
0300 330 9033

### Help with domestic violence and abuse

[www.brighton-hove.gov.uk/domestic-abuse-help](http://www.brighton-hove.gov.uk/domestic-abuse-help)  
Freephone 0300 323 9985

### Brighton & Hove Independent Mediation Service

[www.bhims.org.uk](http://www.bhims.org.uk)  
01273 700812

### Leaseholders Action Group

lag@clarend.com  
01273 605225  
[www.facebook.com/groups/bhlag](http://www.facebook.com/groups/bhlag)

## Online services

Visit the council housing website to check out  
all housing services at  
[www.brighton-hove.gov.uk/council-housing](http://www.brighton-hove.gov.uk/council-housing)

Pay online at [www.brighton-hove.gov.uk/pay](http://www.brighton-hove.gov.uk/pay)

Go to the Housing Online system at  
[www.brighton-hove.gov.uk/housingonline](http://www.brighton-hove.gov.uk/housingonline)

Information about money matters, tax,  
benefits and more [www.gov.uk](http://www.gov.uk)



Follow us on [twitter.com/BHHousing](https://twitter.com/BHHousing)



Like us on [facebook.com/BHHousing](https://facebook.com/BHHousing)

## Housing Committee Meeting Wednesday 21 June 2023 at 4pm

The meeting will be held in the Council Chamber,  
Hove Town Hall, Norton Road, Hove, BN3 3BQ.

All council meetings are open to the public, and  
you can submit public questions.

Agendas, minutes and webcasts of council  
meetings are available at  
[www.brighton-hove.gov.uk/council-meeting](http://www.brighton-hove.gov.uk/council-meeting)

If you have any comments or suggestions for  
future articles, email  
[homingin@brighton-hove.gov.uk](mailto:homingin@brighton-hove.gov.uk) or write to  
**Homing In**, Performance & Improvement,  
Housing Centre, Unit 1, Fairway Trading Estate,  
Eastergate Road, Brighton BN2 4QL or call  
01273 293030.

**Homing In** is produced by Brighton & Hove  
City Council's communications team and the  
Tenant Editorial Board.

## Save paper and get **Homing In** online!

Email [housing.customerservices@brighton-hove.gov.uk](mailto:housing.customerservices@brighton-hove.gov.uk)  
to stop receiving a paper copy of **Homing In** and  
we'll email you when it is available on our website.

