

# Homes for everyone

Housing strategy  
2024 to 2029



Brighton & Hove  
City Council

# Homes for everyone



# Contents

|  |           |
|--|-----------|
| <b>Foreword</b>  | <b>4</b>  |
| <b>Introduction</b>  | <b>5</b>  |
| <b>The policy context</b>  | <b>6</b>  |
| <b>What the data tells us</b>  | <b>8</b>  |
| <b>Priority 1: Improve housing quality, safety and sustainability</b>                                      | <b>11</b> |
| 1.1 Improve the quality of council homes and estates   | 11        |
| 1.2 Prioritise building and fire safety improvements   | 12        |
| 1.3 Improve standards in the private rented sector   | 12        |
| 1.4 Improve sustainability and energy efficiency   | 12        |
| <b>Priority 2: Deliver the homes our city needs</b>  | <b>13</b> |
| 2.1 Increase the supply of high-quality homes that meet the needs of our communities                       | 13        |
| 2.2 Increase the supply of affordable homes  | 14        |
| 2.3 Create places where people are proud to live   | 14        |
| <b>Priority 3: Prevent homelessness and meet housing need</b>  | <b>15</b> |
| 3.1 Increase our effectiveness in preventing homelessness  | 15        |
| 3.2 Reduce the number of households in temporary accommodation   | 15        |
| 3.3 Focus our assistance on people who need most help  | 16        |
| <b>Priority 4: Promote improved health and wellbeing for all</b>   | <b>17</b> |
| 4.1 Work with residents and our partners to develop safe, healthy and inclusive estates and neighbourhoods | 17        |
| 4.2 Support people to live independently   | 18        |
| 4.3 Promote healthy housing for our residents  | 18        |
| <b>Priority 5: Provide resident focused housing services</b>   | <b>19</b> |
| 5.1 Listen to and engage with our residents  | 19        |
| 5.2 Ensure our housing services are accessible, fair and inclusive   | 20        |
| 5.3 Deliver effective, high quality housing services   | 20        |
| 5.4 Work with our partners to agree and deliver shared priorities  | 20        |
| <b>Delivering the strategy</b>   | <b>21</b> |

# Foreword

Brighton & Hove is a city of huge ambition, fabulous diversity and significant opportunity. We want a city we can all be proud of, a city that is fair and inclusive and a healthy place where people can thrive. Homes for everyone is central to the council's vision for a better Brighton & Hove for all. It is also a call to action.

This housing strategy sets out our goal to deliver accessible, affordable and high-quality homes for everyone in Brighton & Hove. However, we recognise that we can't achieve this on our own. We have increasing demand for our services and a number of legal duties, but we also have shrinking resources. What we can do is provide leadership, build partnerships and encourage creative, bold and innovative solutions to the housing crisis.

Housing supply and affordability is a significant issue for the city, with many people unable to afford a mortgage or pay their rent. Some are forced to live in overcrowded or unsuitable conditions. Others must look outside the city to find homes that meet their needs.

We have a strong track record of delivering new homes that are genuinely affordable and built to high environmental standards. We also have an ongoing programme to improve our existing council homes and to ensure that all homes in the city are fit for purpose and sustainable.



Preventing and alleviating homelessness is a key statutory duty for the council. We will continue to do everything we can to make sure that people are treated fairly and with respect, whatever their housing situation. The most vulnerable deserve our support and we will always prioritise their needs. This includes support to access appropriate housing and to maintain independence and dignity.

We are committed to putting people at the heart of housing in the city. We want to work with our tenants and leaseholders to improve our housing services. We know that we don't always get things right, but we are determined to do our very best.

We are resolute in our ambition to achieve a better Brighton & Hove for all. The challenges ahead are significant, yet we are confident that the priorities set out in this strategy will help us deliver improved housing outcomes for the city.

The input of the city's residents and our partners has helped us shape this strategy. I am deeply grateful to those who have provided us with constructive feedback on earlier drafts. I look forward to working with you to deliver our ambitious plans.

**Councillor Gill Williams**  
Cabinet Member for Housing and New Homes, Brighton & Hove City Council

# Introduction

The council plan 2023 to 2027 sets out a vision for a better Brighton & Hove for all. It outlines our missions to make the city fairer and more inclusive, a safer and healthier place to live, and deliver better services by putting residents at the heart of all we do.

This housing strategy outlines our housing priorities for the next 5 years and describes the steps we will take to deliver them. The strategy will guide our actions as a council and demonstrate to residents and our partners that we are serious about tackling the housing crisis in the city.

The housing strategy supports the delivery of the council plan. It also provides a framework for more detailed plans, including the Homelessness and Rough Sleeping Strategy, the Housing Allocations Policy, new housing supply and our housing asset management strategy. It connects to other major strategies and plans including the City Plan, Economic Strategy, the Joint Health and Wellbeing Strategy, Local Transport Plan and more.

The housing strategy is about more than council housing services. We want to shape and deliver a shared long-term agenda with our partners in the city and beyond and critically, with our residents and the wider community.

This is a high-level document that sets out the council's vision for housing in the city. The 5 priorities we have identified will help us focus our efforts to deliver accessible, affordable and high-quality homes for everyone in Brighton & Hove.

As well as an annual action plan to accompany the strategy, more detail on delivery will be set out in our operational plans. Detailed proposals for future housing development will be put forward in the new City Plan Part 1.

## Our strategic priorities

- 1 Improve housing quality, safety and sustainability**
- 2 Deliver the homes our city needs**
- 3 Prevent homelessness and meet housing need**
- 4 Promote improved health and wellbeing for all**
- 5 Provide resident focused housing services**

In delivering our strategy we will strive to incorporate the following principles in everything we do.

## Principles

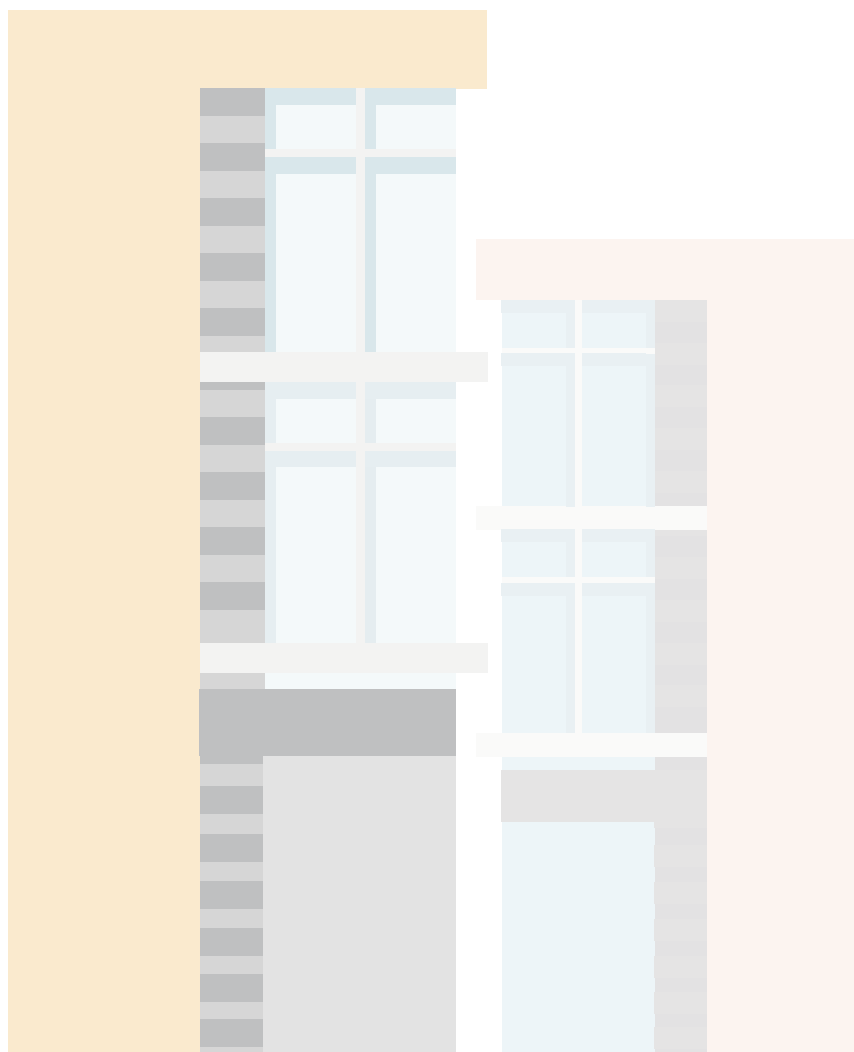
- **Collaborate and innovate**
- **Invest in our existing homes**
- **Listen to our residents and treat people with respect**
- **Address diverse needs and provide fair access to services**
- **Take into account the climate and biodiversity crises**
- **Manage our budgets effectively and make best use of our resources**

# The policy context

The council has a wide range of housing duties and responsibilities. These include allocating social housing, providing housing advice and information, preventing homelessness, and developing new housing to address local needs.

Since our last housing strategy was agreed in 2015, major changes in national housing policy have been introduced. The Homelessness Reduction Act (2017) significantly changed our legal duties towards households facing homelessness, with a greater emphasis on preventing homelessness. We responded, reviewing our homelessness and rough sleeping services and setting out plans for further change in a new Homelessness and Rough Sleeping Strategy 2020 to 2025. The Armed Forces Act (2021) placed a legal duty on local authorities to give priority for social housing to serving members of the armed forces, former service personnel and their family members.

The Grenfell tragedy in 2017 raised fundamental questions about fire and building safety. For landlords, developers and property owners, including local authorities, the Fire Safety Act (2021), Fire Safety (England) Regulations 2022 and Building Safety Act (2022) have introduced significant new regulations and new safety requirements, particularly in relation to high-rise residential property.



The Social Housing (Regulation) Act (2023) strengthens regulation of the activities of social housing providers and sets higher standards for the health & safety of homes as well as the conduct and performance of landlords. It aims to give tenants a real voice and requires landlords to be more transparent about their performance. In addition, we anticipate that, if enacted, the Renters' Rights Bill will extend protection for private rented sector tenants.

Delivering new, high-quality and affordable homes is a key priority for the council. It is also a national priority, with new and stretching development targets from central government. The council has a strong track record of delivering additional council

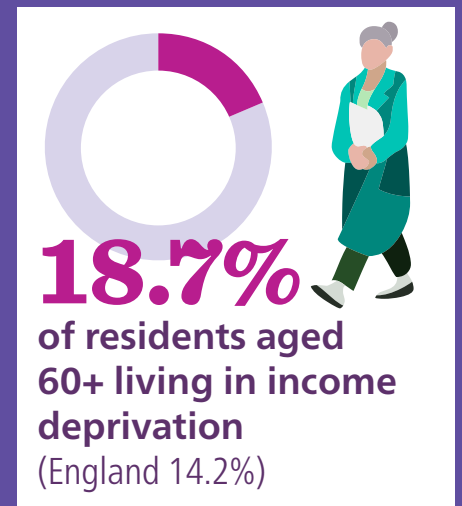
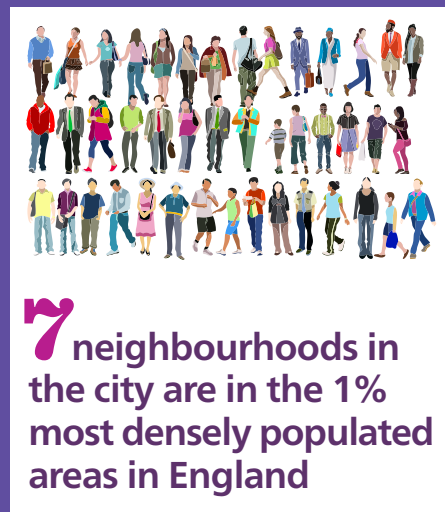
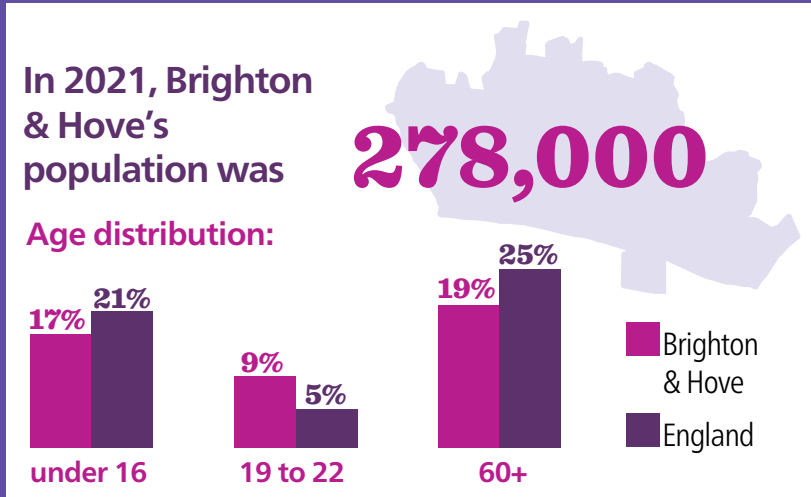
homes and of successfully unlocking funding through the Homes England Affordable Homes Programme to help deliver our new build plans. We will actively seek other funding opportunities to purchase additional and build new homes for our city.

New housing duties have also been introduced to protect the most vulnerable. The Domestic Abuse Act (2021) requires local housing authorities to provide support and safe accommodation for victims of domestic abuse. The Supported Housing (Regulatory Oversight) Act 2023 aims to improve the quality of housing designed for vulnerable adults who need some level of support to live independently.



# What the data tells us

This is a snapshot of population and housing data at the time the strategy was agreed. More detailed information can be found in our Joint Strategic Needs Assessment and the Strategic Housing Market Needs Assessment. Data from both have been used to inform the development of our strategic priorities.



**33%**

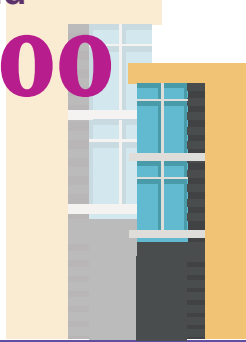
of homes are rented privately (20% in England)



Brighton & Hove has around

**11,900**

council rented homes



Over

**7,500**

households on the housing register in August 2024



More than

**1,800**

households in temporary and emergency accommodation (August 2024)



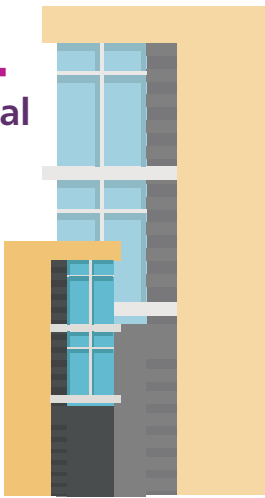
**£23.2m**

cost of temporary and emergency accommodation in 2023/24



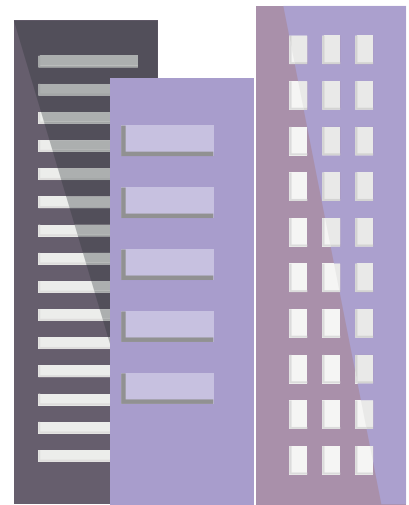
**661**

additional council homes 2015 to 2023



**1,470**

additional affordable homes 2015 to 2023



**£421,950**

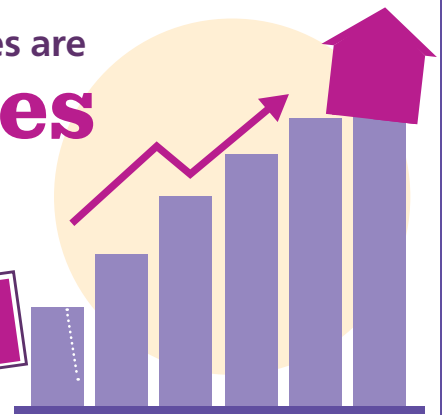
average house price (August 2023)



Average house prices are

**12.3 times**

average earnings in the city



### Average private rent

# £1,300

per month in  
Brighton & Hove

(September 2023)

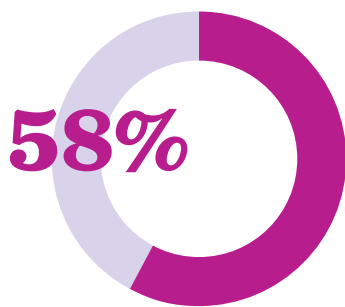
£850 England

£1,050 South East

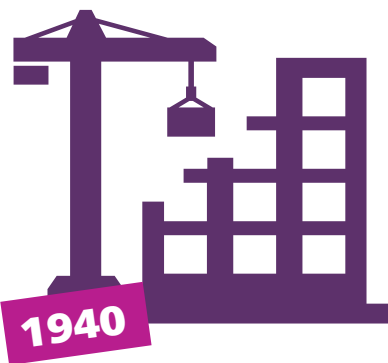


### Average rents

|        |        |
|--------|--------|
| Room   | £607   |
| Studio | £814   |
| 1 bed  | £1,025 |
| 2 bed  | £1,375 |
| 3 bed  | £1,790 |
| 4 bed  | £2,500 |



58%  
of Brighton & Hove's  
housing was built  
before 1940



# 472

 households prevented from becoming homeless in 2023

Brighton & Hove has

# 2,696

 homes with support and

# 826

 homes with care

18%  
of private rented  
homes likely to have at  
least 1 serious hazard

# 52

people sleeping rough  
on official count night  
in November 2023



# Priority 1: Improve housing quality, safety and sustainability

## Why this is important

We need to make the most of the housing that we already have. Around 80% of the homes that will exist in 2050 have already been built. Many of these properties, across all types of tenure, need work to ensure that they are suitable, safe and sustainable, now and in the future. Some properties, however, have reached the end of their life and need to be renewed.

The council manages approximately 12,000 rented and 2,700 leasehold properties and we need to invest more, particularly in improving health and safety. We will prioritise investment in our buildings and in fire prevention, gas and electrical safety, asbestos, legionella and other health and safety risks such as damp and mould, to ensure safe, good quality council homes. Registered providers of social housing are subject to the same regulatory framework as the council and will be reviewing their investment priorities to meet the required standards.

The growth in the private rented sector in Brighton & Hove means that nearly one in 3 households in the city are renting privately. While most landlords operate responsibly, there are concerns that some do not. We will work with landlords to improve the management, standards and quality of homes in this key housing sector. Where appropriate, we will use our powers to enforce standards in the private sector.

Improved energy efficiency plays a major role in reducing the city's carbon footprint. It also reduces costs for households and helps

tackle the continuing cost of living crisis. We will invest in improving the energy efficiency of council homes and, where possible, support other residential property owners to make improvements.

## What we will do

### 1.1 Improve the quality of council homes and estates

- Provide an effective, efficient and timely repairs, maintenance and planned improvements service for our homes including moving toward a more planned, preventative model for maintaining and upgrading council homes.
- Carry out a programme of planned work to ensure that council homes are upgraded to agreed timescales.
- Continue to reduce the backlog of routine housing repairs.
- Develop and implement a new Housing Asset Management Strategy to ensure we understand the condition of our homes and inform the delivery of our planned and major works programmes.
- Ensure that all council-owned homes meet the national Decent Homes Standard.

## 1.2 Prioritise building and fire safety improvements

- Invest in building and fire safety to meet our new duties under the Building Safety Act 2022 and Fire Safety (England) Regulations 2022.
- Ensure that the council complies with health and safety requirements in all our homes.
- Ensure the council complies with the Social Housing (Regulation) Act 2023 and meets the Regulator of Social Housing consumer standard, including on safety and quality.

## 1.3 Improve standards in the private rented sector

- Improve the condition of Houses in Multiple Occupation through the existing mandatory licensing of larger properties and introduce an additional licensing scheme for smaller properties.
- Introduce selective licensing schemes in areas of the city where the evidence supports it.
- Enforce minimum energy performance standards in the private rented sector in line with legislation.
- Work with landlords to identify and make improvements to their properties and, where appropriate, use our powers to enforce essential work.
- Prepare for expected changes in legislation to protect private sector tenants.

## 1.4 Improve sustainability and energy efficiency

- Improve the energy performance of council homes through investment, including improvements to roofing, windows, doors, building fabric, heating and hot water systems and solar panels.
- Support private landlords and owner occupiers to improve the energy performance of their properties by promoting access to grant funding and signposting to home energy efficiency advice and support.
- Improve the sustainability of our housing by reducing our carbon footprint, minimising waste, adapting to climate change and enhancing biodiversity.

### How we will measure progress

#### Each year we will update on the following indicators

- % of routine council housing repairs completed on time
- % of council homes that meet the government's Decent Homes Standard
- Energy efficiency rating of council-owned homes
- Number of fully licenced properties within mandatory, additional and selective licensing schemes
- Number of fines issued for private rented homes that do not meet required EPC ratings

# Priority 2: Deliver the homes our city needs

## Why this is important

**Good quality housing and infrastructure has a key role to play in improving quality of life, boosting the economy and making the city a place where people are proud to live.**

Brighton & Hove is an expensive place to live and even some affordable homes are beyond the reach of many. We know that there is a shortage of housing suitable for families in the city. We are not helped by limited availability of land, competition for other land uses and the need to ensure we support facilities such as schools, health services, open space and transport infrastructure. High land values and the viability of development sites continue to present barriers to accelerated development. The planned refresh of the City Plan Part 1 gives us the opportunity to address these issues and set new goals for housing development.

The city has two universities with 37,000 students. The growth in purpose-built student accommodation has encouraged a better balance of student housing and we will continue to support the development of safe, high quality and affordable student housing.

We can't overcome the mismatch between supply and demand, but we can focus on providing more council and other affordable housing either through our own new build programmes, partnership initiatives, developer contributions or registered providers. To truly make a difference, we know we need more affordable housing options, from council homes on social rent to home ownership. We also need a range of options for our diverse

population, including homes which can be adapted to changing needs, temporary and supported accommodation and suitable provision for marginalised groups and households with higher levels of need. Using the council's own assets and resources and prioritising brown field sites to bring forward new homes is key to successful delivery.

We need to continue with our successful work to convert private housing into council housing through buy back and other acquisition programmes. As part of our ambitious plans to provide new homes, we will incorporate the physical, social and green infrastructure needed for communities to thrive. Our developments will be sustainable, keeping costs down and reducing impact on the environment.

## What we will do

### 2.1 Increase the supply of high-quality homes that meet the needs of our communities

- Work with partners to ensure there are new homes that meet the needs of residents.
- Review our housing development targets through the refresh of the City Plan.
- Seek a balanced mix of property sizes and tenures appropriate for the future needs of the city, including family housing and homes that can be adapted to changing requirements.

- Identify opportunities to develop new sites, including opportunities for developing and regenerating council-owned land and assets.
- We will be innovative, including using modern methods of construction and building partnerships to design creative solutions.
- Design new homes that are easy to maintain and manage and meet the highest environmental and sustainability standards.
- Build a range of adaptable and specialist homes to meet people's changing needs throughout their lives.
- Work with the city's further and higher education sector to assess future demand and potential locations for new student accommodation.
- Encourage sustainable and flexible design of student accommodation to enable it to be repurposed for other uses if appropriate.

## 2.2 Increase the supply of affordable homes

- Increase the number of new affordable homes delivered by the council and other providers of affordable housing, with at least 2,000 affordable homes delivered during the lifetime of this strategy. This figure will be kept under regular review.
- Buy back council homes lost through the right to buy and consider the acquisition of other homes where economically viable.
- Deliver lower cost and council homes through our partnership 'Homes for Brighton & Hove'.
- Develop a protocol setting out how the council will work with developers to maximise the provision of affordable housing.

- Increase options for low cost, affordable ownership through First Homes and other shared ownership schemes as a route to affordable housing for essential workers.
- Use local criteria for access to affordable housing provided through Build to Rent schemes to ensure prioritisation of local people on lower incomes, essential worker roles that are hard to recruit or retain and disabled people.
- Review the Transfer Incentive Scheme to address under-occupation and ensure that people are in homes that meet their needs.

## 2.3 Create places where people are proud to live

- Through the City Plan, our planning service will make sure that new homes for everyone are well designed, good quality and sustainable.
- We will work with residents to make sure that spaces and places are designed to support and strengthen all our different communities.
- Ensure our housing estates are clean and well maintained.
- Explore options to reduce short-term lets.
- Apply a Council Tax premium on second and long-term empty homes to encourage owners to bring them back into use.
- Work with property owners to bring long-term empty housing back into use.

### How we will measure progress

#### Each year we will update on the following indicators

- Number of additional council homes delivered (new build, acquisitions and conversions)
- Number of additional affordable homes delivered by Registered Providers
- % of affordable homes achieved in new housing developments

# Priority 3: Prevent homelessness and meet housing need

## Why this is important

More of our residents are facing severe and challenging housing needs. The increasing costs of housing, ending of tenancies, changes in national policy and a shortage of genuinely affordable housing have led to an increase in the number of households at risk of homelessness.

Our approach is to prevent homelessness before people become homeless. We recognise that tackling and preventing homelessness requires a holistic approach that goes beyond council housing services. We will work with individuals, families, landlords, other council services, public sector bodies and the Third Sector to prevent and alleviate homelessness. Our Homelessness and Rough Sleeping Strategy outlines our approach in more detail.

The number of households living in temporary and emergency accommodation has risen to unprecedented levels. Temporary and emergency accommodation is expensive. It is also insecure and may feel unsuitable for many placed there. We know that the experience of living in temporary or emergency accommodation has a negative impact on children and vulnerable adults.

There is a high demand for housing from people in urgent housing need, including those fleeing domestic violence, vulnerable families, refugees and asylum seekers, and people with complex needs. We will ensure that in responding to urgent need we will tailor our response to ensure fair access to support and services. We

will work with our partners to review and improve our support for rough sleepers in response to increasing complexity of need.

## What we will do

### 3.1 Increase our effectiveness in preventing homelessness

- Deliver an improved homelessness service through the homelessness transformation programme to focus on the needs of clients.
- Work with partners to educate and increase awareness of homelessness prevention and housing options.
- Encourage people to access our support services early to help prevent them becoming homeless.
- Support people to maintain their tenancies and offer advice and assistance to prevent them becoming homeless.
- Use our allocations policy to support the prevention or relief of homelessness.

### 3.2 Reduce the number of households in temporary accommodation

- Review the housing allocations policy to ensure that allocations are fair and give all communities reasonable access to our housing.
- Reduce our overall use of temporary and emergency accommodation.

- Use the Private Rented Sector Offer Policy where suitable and appropriate.
- Convert temporary accommodation to assured shorthold tenancies where suitable and appropriate.
- Improve the temporary and emergency accommodation offer in the city.

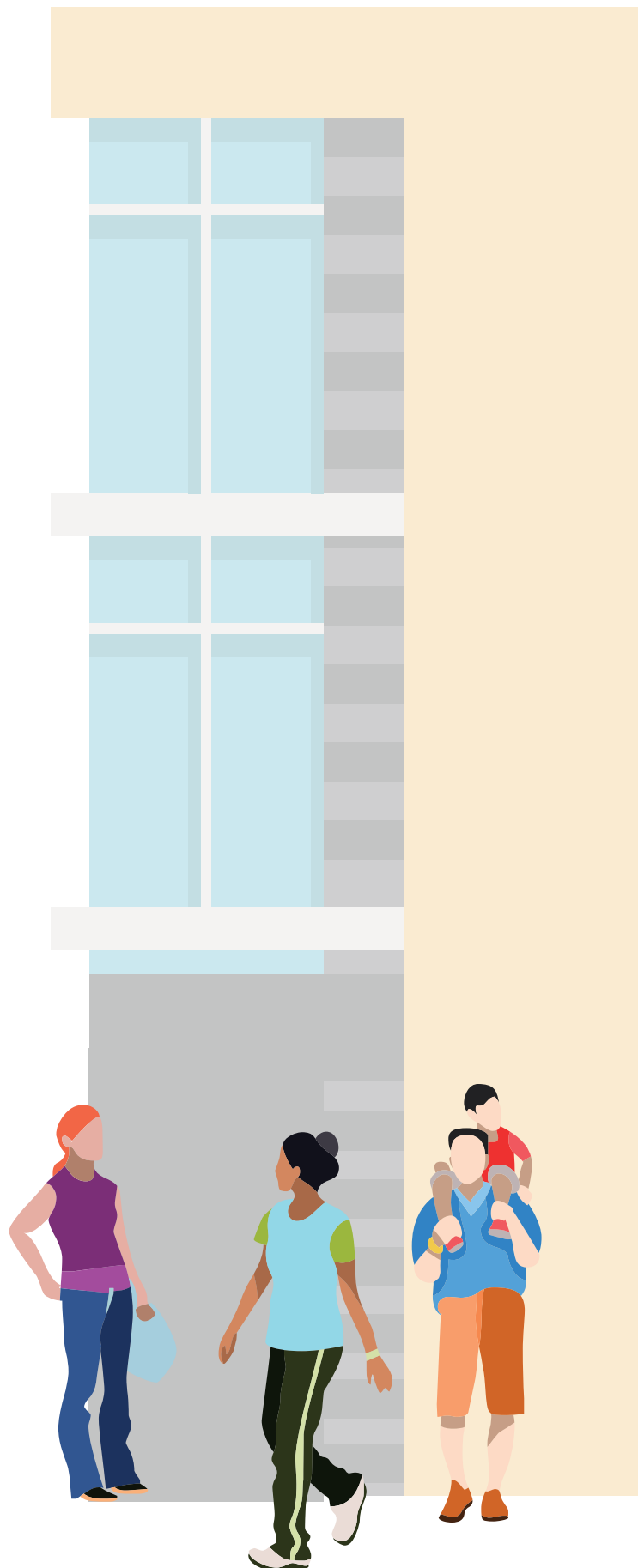
### 3.3 Focus our assistance on people who need most help

- Support rough sleepers to access services and accommodation.
- Work with our partners to improve the join up between the council's homelessness services and homeless healthcare services
- Commission supported and accessible accommodation to meet the needs of vulnerable households.
- Work with our social care and health colleagues to address the housing and support needs of those in urgent housing need.
- Develop joined up approaches for those most at risk of harm or where there is greater impact if they become homeless.

#### How we will measure progress

##### Each year we will update on the following indicators

- % of homelessness cases presenting during the prevention duty stage
- % of homeless prevention cases closed with a successful prevention outcome
- Total number of households in temporary accommodation
- Number of verified rough sleepers
- % of people feeling safe after leaving refuge
- Take up of housing options



# Priority 4: Promote improved health and wellbeing for all

## Why this is important

The quality, location and cost of our homes play a role in our overall wellbeing, underpinning our health, relationships, security, and the environment around us. Ensuring people have appropriate, good quality housing can increase their resilience, help them retain their independence, and promote their health and wellbeing for longer. It can help delay or reduce their need for social care and health services in the future.

The place we call home extends beyond the walls of our house or flat. Safe, healthy and inclusive neighbourhoods are critical for wellbeing. Safe neighbourhoods allow residents to live free from fear and anxiety. Healthy neighbourhoods provide easy access to green spaces, healthy food options and opportunities for physical activity. Inclusive neighbourhoods embrace diversity and foster a sense of belonging and connection.

The council is corporate parent to around 360 children and young people. Like any parent, we have a role to play in supporting them secure appropriate accommodation and become independent as they move into adulthood.

Disability and physical health needs can restrict the ability to live independently without support. Our disabled facilities grant scheme helps people remain in their home for longer and has a significant impact on wellbeing and quality of life. We also plan to make better use of assistive technology to support residents to live at home.

There is a wide range of supported and specialist accommodation in the city, but we need to ensure we are providing the right accommodation

and support to people with specific or complex needs. This includes, but is not limited to, care leavers, recent prison leavers, vulnerable parents and children, people with a learning disability, people with autism and those with substance dependence or mental health issues. Our seniors housing accommodation offer must also develop to fit the changing needs of our ageing population.

## What we will do

### 4.1 Work with residents and our partners to develop safe, healthy and inclusive estates and neighbourhoods

- Involve residents and community organisations in the design and oversight of safe housing and estates.
- Use our estate investment and development budgets to invest in environmental and communal area improvements on our estates, based on resident priorities.
- Work with residents and our partners to deter and tackle anti-social behaviour, domestic abuse and hate crime on our estates and council homes.



- Increase our support to more vulnerable clients and communities in our council homes.
- Move to more proactive tenancy and estates management including tenancy visits and estate inspections.

#### 4.2 Support people to live independently

- Support people to live independently through investment in adaptations to existing homes.
- Review our approach to understanding and responding to older people’s housing needs, including seniors and retirement housing.
- Review the provision of exempt supported accommodation in the city and develop a Supported Housing Strategy to ensure we meet the needs of vulnerable households who need our services.
- Commission supported housing which addresses the needs of people with complex needs.
- Deliver new supported housing for people with physical disabilities.
- Prioritise support for the most vulnerable households to help them manage their tenancy, prevent debt and remain in their homes.
- Continue to improve our work across housing, adults’ and children’s services to design and commission services jointly.
- Take forward jointly agreed actions in our learning disability, autism and mental health housing action plans.
- Provide accessible information and advice to people who want to find accommodation which is best suited to their needs.

#### 4.3 Promote healthy housing for our residents

- Prioritise dealing with damp and mould and other health hazards in our council homes and the temporary accommodation we use.
- Promote opportunities for improving energy efficiency so that people’s homes are adequately heated and properly ventilated.
- Take action to reduce overcrowding and ensure privacy.
- Ensure sufficient amenity space is delivered on new housing developments.

#### How we will measure progress

##### Each year we will update on the following indicators

- Planned moves from supported accommodation
- Unplanned moves and evictions from supported accommodation
- Private sector housing – average weeks taken to approve Disabled Facilities Grant applications
- Council housing – average weeks taken to approve applications for major adaptations
- Number of tenants supported through our tenancy sustainment service

# Priority 5: Provide resident focused housing services

## Why this is important

We are determined to ensure that residents in our homes are safe, are listened to, live in good quality housing and have access to redress when things go wrong. Following the 2017 Grenfell Tower fire, new legislation affecting all social landlords has established a Regulator of Social Housing. The Social Housing (Regulation) Act 2023 requires the council and other social landlords to fully meet and ensure compliance with the new regulatory framework.

We are committed to achieving equitable outcomes for residents by providing fair access to services and meeting the diverse needs of our communities. This means listening to people and acting on what they tell us. It also means treating people fairly and with respect. Our Engagement Framework, Accessible City Strategy and Anti-Racism Strategy guide our approach.

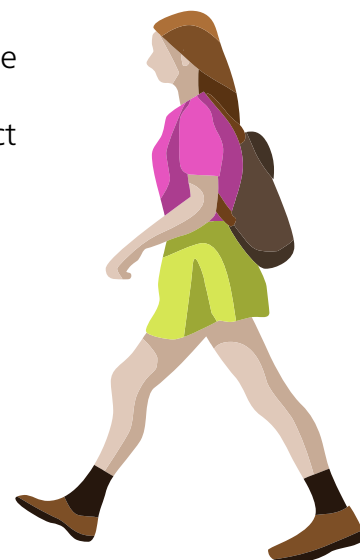
To turn our aspirations into reality we know that we must innovate, as well as draw on evidence of what works from elsewhere. We must make the most of our own and external sources of funding and work collaboratively with our partners on joint priorities, sharing information about our assets and investment plans to ensure alignment with the needs of the city.

## What we will do

### 5.1 Listen to and engage with our residents

- Broaden and strengthen engagement with council tenants and leaseholders by providing a range of opportunities to engage more diverse voices.

- Implement the council's Engagement Framework and provide fair and accessible opportunities for people to influence decisions on issues which affect them.
- Improve our processes and systems for handling resident complaints to ensure they are addressed fairly, effectively and promptly.
- Work with people with lived experience to design improved housing pathways and services.
- Capture learning from complaints to identify issues and help us improve our performance and people's experience of using our services.
- Communicate clearly and provide information so that people understand what they can expect from us.
- Collect and share information about our performance



## 5.2 Ensure our housing services are accessible, fair and inclusive

- Take action to deliver equitable outcomes and fair access to our services.
- Collect and use information and data to help us better understand and respond to the diverse needs of our residents, including those arising from protected characteristics, language barriers and additional support needs.
- Optimise the local benefits and social value of our inhouse repairs and maintenance service.
- Support social value and community wealth building through our contracts and the procurement of major works.
- Recruit and retain staff from all the city's communities to ensure a fair and inclusive workplace and ensure our workforce reflects the community we serve.

## 5.3 Deliver effective, high quality housing services

- Continue to improve resident focused local housing management services in line with local priorities.
- Increase our use of data and technology to manage council properties more effectively and improve our services to residents.
- Ensure that our housing workforce has the relevant skills and competencies to deliver an effective service to residents, including training in anti-discriminatory and trauma informed practice for frontline staff.

## 5.4 Work with our partners to agree and deliver shared priorities

- Cooperate with our partners to promote social, environmental and economic wellbeing in our estates and neighbourhoods.
- Develop and deliver integrated services at a neighbourhood level.
- Design services to address the needs of our most vulnerable residents, including people with multiple and compound needs.
- Learn from others and share good practice by engaging with regional and national networks of housing authorities and providers of social housing.
- Proactively engage with regulatory bodies.

### How we will measure progress

#### Each year we will update on the following indicators

- Complaint responses within 10 working days
- Calls answered by Housing Customer Services
- Surveyed tenants satisfied with repairs (standard of work)
- Surveyed tenants satisfied with repairs (customer service)
- % of rent collected from current tenants of council homes

# Delivering the strategy

The housing strategy and its priorities are complemented by linked and supporting strategies and plans which set out in more detail what we will deliver. These include the City Plan, the Economic Strategy, the Homelessness and Rough Sleeping Strategy and the Joint Health and Wellbeing Strategy.

Plans to improve the council's effectiveness and to modernise our ways of working, are set out in our Customer Experience Strategy, Business Framework, Our People Strategy, the ICT and Digital Strategy, and corporate modernisation programmes. Our Anti-Racism Strategy and Accessible City Strategy aim to create cultural change and lead to more equitable ways of working and delivering our services.

Directorate and service plans provide details of the key actions, projects, timeframes, and measures that support the delivery of the housing strategy. These are updated annually.

The Housing Revenue Account contains the income and expenditure relating to the council's social landlord duties. It is a ring-fenced budget that covers the management and maintenance of council-owned housing stock. It includes substantial investment in building, health and fire safety compliance and in anticipation of the strengthened role of Regulator of Social Housing, ensuring adherence to their consumer standards. The budget also continues to support investment in new housing supply and sustainable homes as well as in the work of our housing services. Housing services are also funded by the General Fund and through grants from external funding bodies.

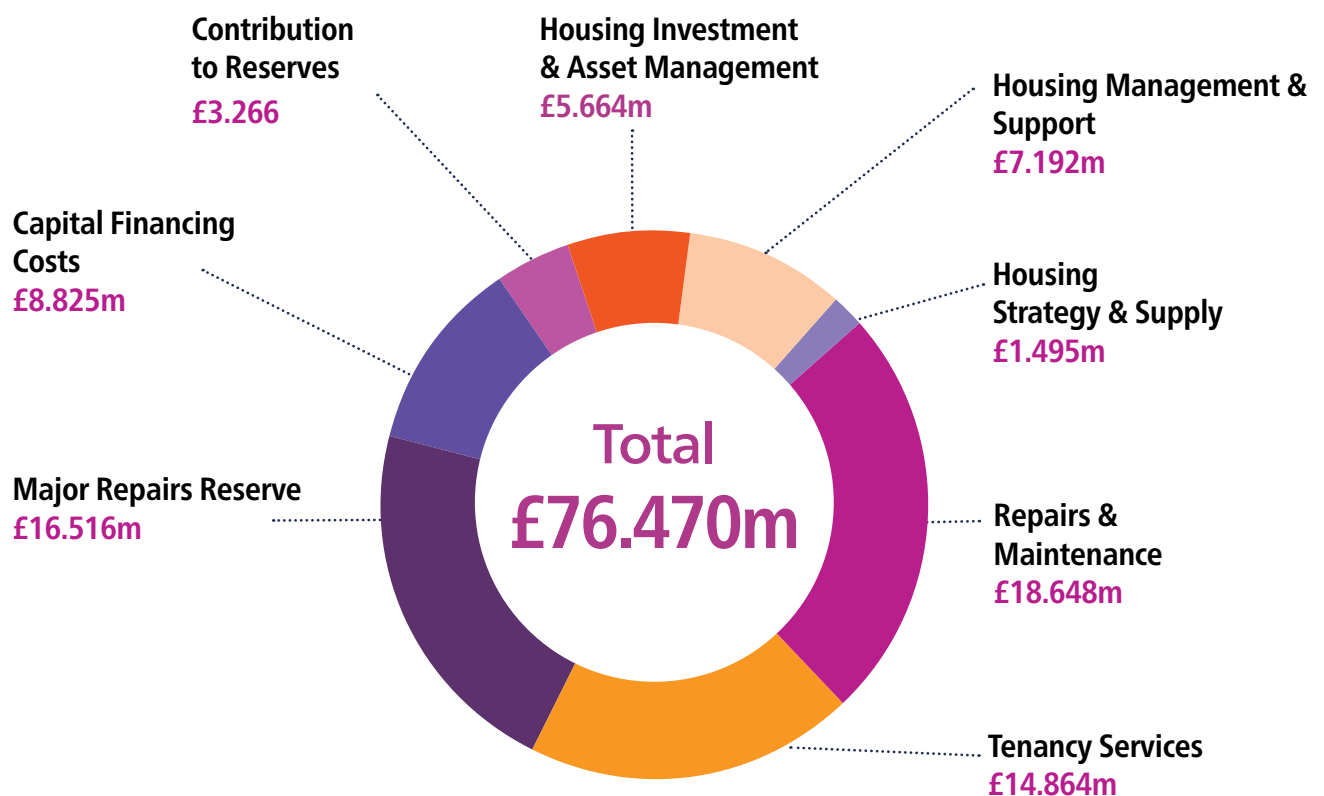


# Housing Revenue Account

## Income 2024/25

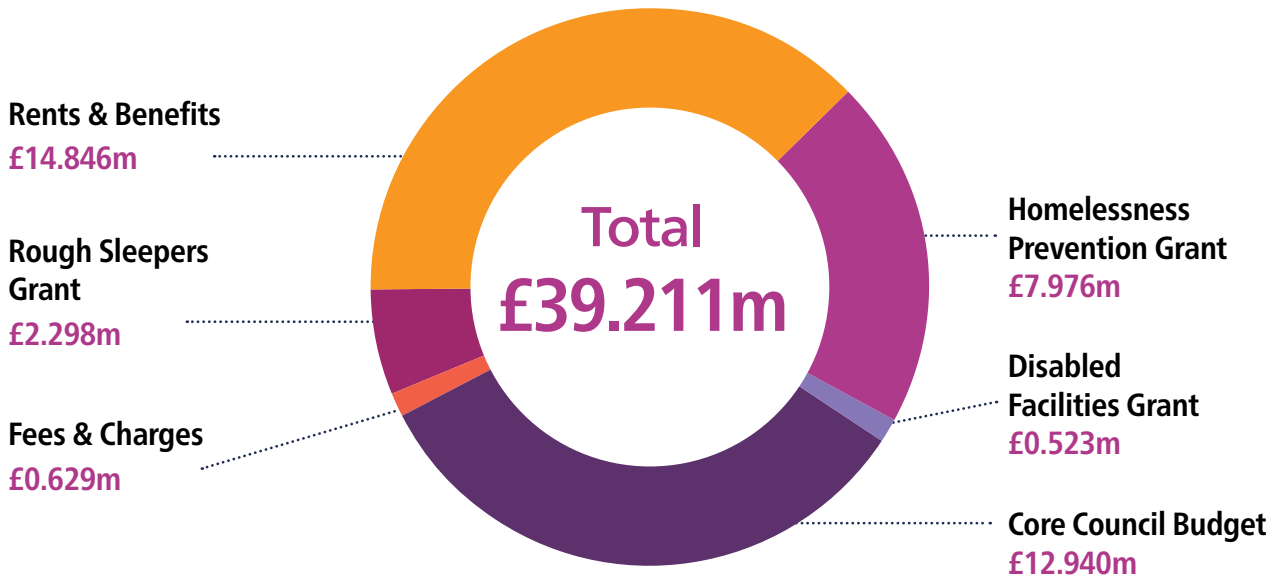


## Expenditure 2024/25



# General Fund

## Income 2024/25



## Expenditure 2024/25

