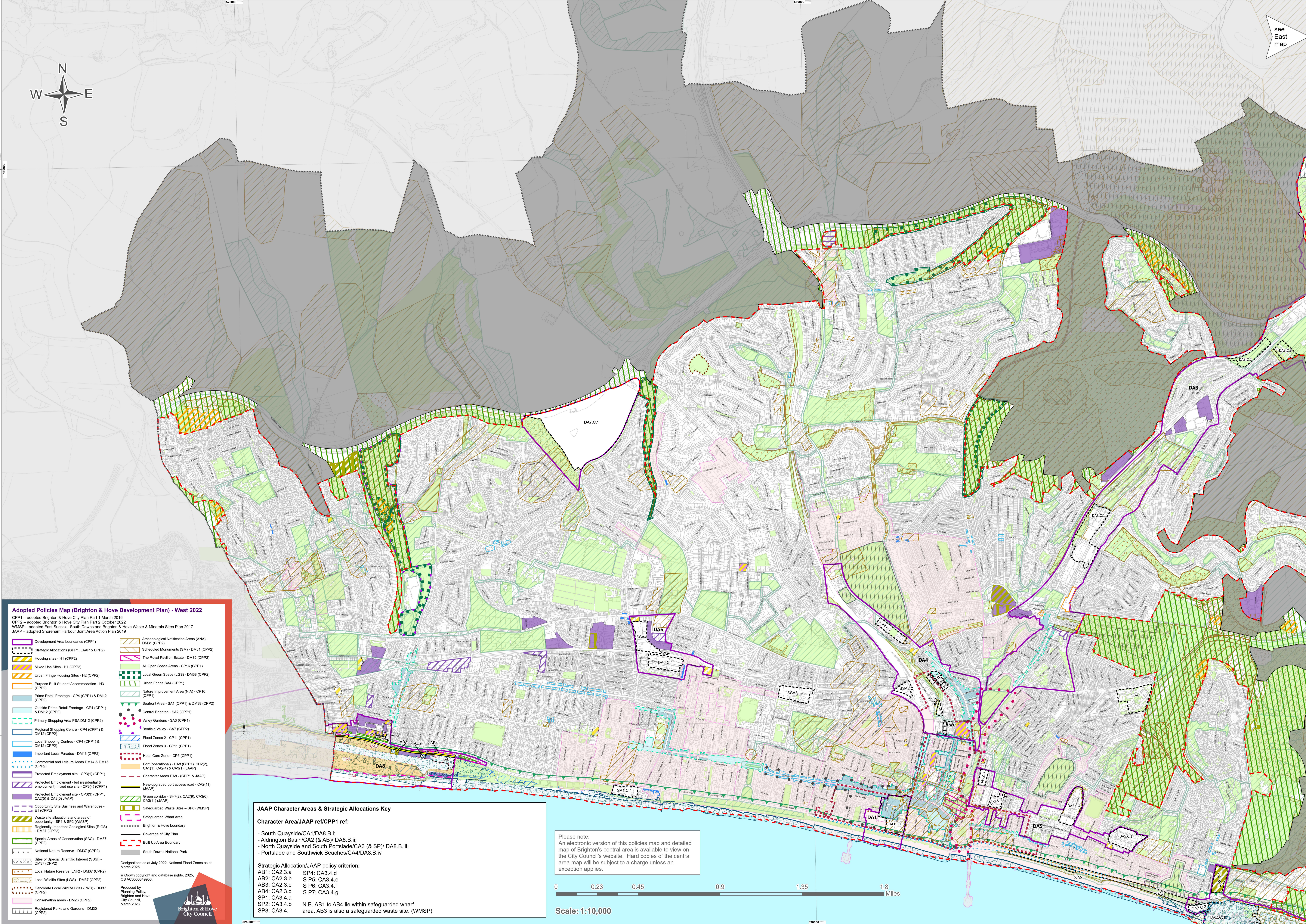




see East map



Adopted Policies Map (Brighton & Hove Development Plan) - West 2022

CPP1 – adopted Brighton & Hove City Plan Part 1 March 2016
 CPP2 – adopted Brighton & Hove City Plan Part 2 October 2022
 WNSP – adopted East Sussex, South Downs and Brighton & Hove Waste & Minerals Sites Plan 2017
 JAAP – adopted Shoreham Harbour Joint Area Action Plan 2019

<ul style="list-style-type: none"> Development Area boundaries (CPP1) Strategic Allocations (CPP1, JAAP & CPP2) Housing sites - H1 (CPP2) Mixed Use Sites - H1 (CPP2) Urban Fringe Housing Sites - H2 (CPP2) Purpose Built Student Accommodation - H3 (CPP2) Prime Retail Frontage - CP4 (CPP1) & DM12 (CPP2) Outside Prime Retail Frontage - CP4 (CPP1) & DM12 (CPP2) Primary Shopping Area PSA DM12 (CPP1) Regional Shopping Centres - CP4 (CPP1) & DM12 (CPP2) Local Shopping Centres - CP4 (CPP1) & DM12 (CPP2) Important Local Parades - DM13 (CPP2) Commercial and Leisure Areas DM14 & DM15 (CPP2) Protected Employment site - CP3(1) (CPP1) Protected Employment - led (residential & employment) mixed use site - CP3(4) (CPP1) Protected Employment sites - CP3(3) (CPP1, CA2(5) & CA3(5) JAAP) Opportunity Site Business and Warehouse - E1 (CPP2) Waste site allocations and areas of opportunity - SP1 & SP2 (WNSP) Regionally Important Geological Sites (RIGS) - DM37 (CPP2) Special Areas of Conservation (SAC) - DM37 (CPP2) National Nature Reserve - DM37 (CPP2) Sites of Special Scientific Interest (SSSI) - DM37 (CPP2) Local Nature Reserve (LNR) - DM37 (CPP2) Local Wildlife Sites (LWS) - DM37 (CPP2) Candidate Local Wildlife Sites (LWS) - DM37 (CPP2) Conservation areas - DM26 (CPP2) Registered Parks and Gardens - DM30 (CPP2) 	<ul style="list-style-type: none"> Archaeological Notification Areas (ANA) - DM31 (CPP2) Scheduled Monuments (SM) - DM31 (CPP2) The Royal Pavilion Estate - DM32 (CPP2) All Open Space Areas - CP16 (CPP1) Local Green Space (LGS) - DM38 (CPP2) Urban Fringe SA4 (CPP1) Nature Improvement Area (NIA) - CP10 (CPP1) Seaford Area - SA1 (CPP1) & DM39 (CPP2) Central Brighton - SA2 (CPP1) Valley Gardens - SA3 (CPP1) Benfield Valley - SA7 (CPP2) Flood Zones 2 - CP11 (CPP1) Flood Zones 3 - CP11 (CPP1) Hotel Core Zone - CP6 (CPP1) Port (operational) - DA8 (CPP1), SH2(2), CA1(1), CA2(4) & CA3(1) (JAAP) Character Areas DA8 - (CPP1 & JAAP) New-upgraded port access road - CA2(11) (JAAP) Green corridor - SH7(2), CA2(9), CA3(6), CA3(1) (JAAP) Safeguarded Waste Sites - SP6 (WNSP) Safeguarded Wharf Area Brighton & Hove boundary Coverage of City Plan Built Up Area Boundary South Downs National Park
---	--

Designations as at July 2022. National Flood Zones as at March 2020.
 © Crown copyright and database rights. 2025. OS AC0000049566.

Produced by Planning Policy, Brighton and Hove City Council, March 2023.

Brighton & Hove City Council

JAAP Character Areas & Strategic Allocations Key

Character Area/JAAP ref/CPP1 ref:

- South Quayside/CA1/DA8.B.i;
- Aldrington Basin/CA2 (& AB)/ DA8.B.ii;
- North Quayside and South Portside/CA3 (& SP)/ DA8.B.iii;
- Portside and Southwick Beaches/CA4/DA8.B.iv

Strategic Allocation/JAAP policy criterion:

AB1: CA2.3.a	SP4: CA3.4.d
AB2: CA2.3.b	SP5: CA3.4.e
AB3: CA2.3.c	SP6: CA3.4.f
AB4: CA2.3.d	SP7: CA3.4.g
SP1: CA3.4.a	
SP2: CA3.4.b	
SP3: CA3.4.	

N.B. AB1 to AB4 lie within safeguarded wharf area. AB3 is also a safeguarded waste site. (WNSP)

Please note:
 An electronic version of this policies map and detailed map of Brighton's central area is available to view on the City Council's website. Hard copies of the central area map will be subject to a charge unless an exception applies.

