

Brighton & Hove Adult Social Care & Wellbeing Annual report 2024 – 2025



Working in partnership
to deliver good health and wellbeing
outcomes for adults

This report reflects on the performance of Health & Adult Social Care
in Brighton & Hove in 2024-2025 (April 24 – March 25)

Foreword

We are delighted to introduce this year's annual report, which demonstrates our unwavering commitment to supporting adults across Brighton & Hove to live healthy, independent, and fulfilling lives, whether they have care needs or are unpaid carers.



Genette Laws
Corporate Director,
Homes &
Adult Social Care



Councillor Mitchie Alexander
Cabinet member for
Communities, Equalities,
Public Health and
Adult Social Care

Our work has been guided by the Council Plan priorities: a fairer city, a sustainable future, and a healthy and caring city. These priorities are woven throughout our approach, from delivering flexible, integrated care and support, to ensuring that everyone can access the right information and advice at the right time.

Brighton & Hove City Council is becoming a Learning Organisation. This report demonstrates how our partnerships with local communities, health services, voluntary & community organisations, and the connection between council services have been crucial in helping us deliver our ambitions. We showcase innovation and creativity in preventative work and in promoting independence. We are committed to diversity, inclusion, and psychological safety, fostering a culture where all stakeholders can share their views and ideas, and supports the council to listen and respond effectively.

Our achievements are only possible thanks to the dedication of our workforce across the city – together, we are building neighbourhood health, linking housing and care, and working collaboratively to improve outcomes.

We know that economic pressures affect many in our community, particularly those with disabilities and full-time unpaid carers, so our approach is rooted in fairness and inclusion, with a strong emphasis on community cohesion and reassurance for all. We are committed to tackling inequalities and supporting those who are most vulnerable.

Our recent Care Quality Commission (CQC)

inspection provided valuable feedback, recognising the dedication of our staff and partners, and confirming areas for further improvement. The improvement areas are focussed on reducing our waiting times for people receiving an assessment of their needs, improving our performance in relation to annual reviews and reducing the numbers of people we place in permanent residential and nursing care, particularly outside of the city.

We are committed to acting on the CQC's recommendations and have already begun implementing changes that will strengthen your experience of our services, enhance quality, and ensure that the voices of those we support remain at the heart of everything we do.

Looking ahead, our priorities remain clear. We will continue to:

Champion fairness and inclusion, ensuring that everyone in our city can access the support they need.

Work towards a sustainable future by innovating in how we deliver care and support, including the use of digital tools and new models of partnership.

Promote health and wellbeing for all, tackling inequalities and supporting people to stay active, connected, and in control of their lives.

Thank you to all our staff, providers, partners, unpaid carers, and community members for your dedication and support. Together, we are making a real difference and delivering on our shared vision for a healthier, fairer, and more inclusive Brighton & Hove.

Our primary responsibilities include:



Improving health, preventing ill health, reducing health inequalities and protecting the health of our residents



Providing information, advice and advocacy



Carrying out individual care needs assessments



Commissioning and providing services to promote independence and improve health and wellbeing



Understanding our communities' needs and strengths to improve health and wellbeing and reduce inequalities



Safeguarding adults at risk of abuse or neglect

In 2024-25:

5,328

people received a long-term adult social care service



711

in nursing homes



736 in residential care



3,887

receive a range of community support options



4,041

new requests for support



4,576

care assessments or reviews took place



907 carers supported by Adult Social Care



493

carer contact assessments completed



28,541

items of daily living equipment



more than **3,900** local people supported by the Healthy Lifestyles Team



over **44,000** sexual health contacts provided



more than **2,800** people engaged with drug or alcohol treatments



914

safeguarding enquiries undertaken (including mental health)



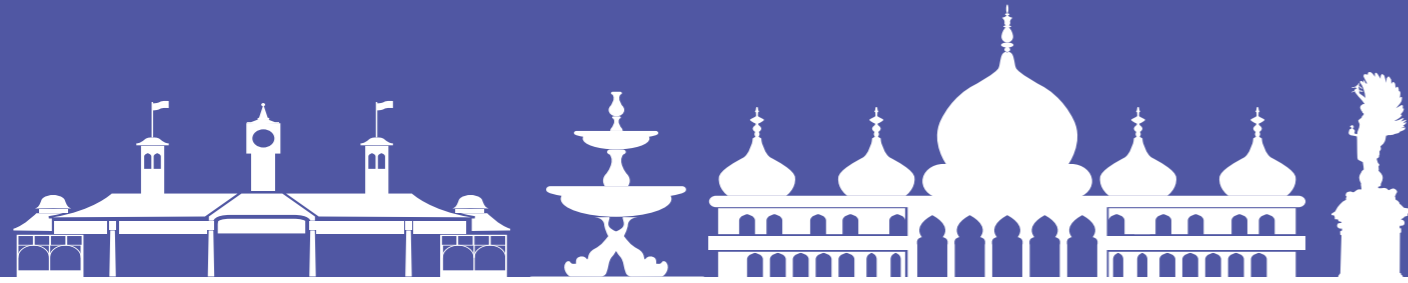
14,511

older people were supported to access advice or activities.



539 people received short-term intensive support





Brighton & Hove

A few facts about our city's population

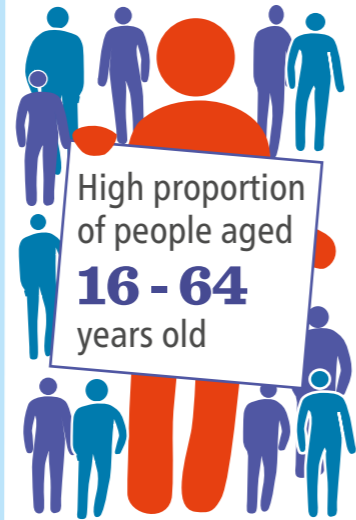
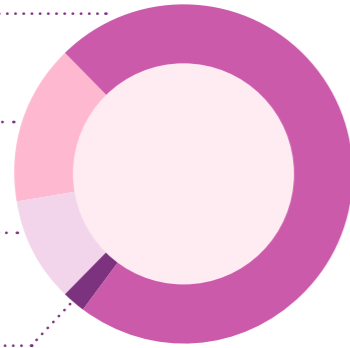
283,870 residents

72%
16 to 64 years old

14%
Under 16 years old

12%
65 to 84 years old

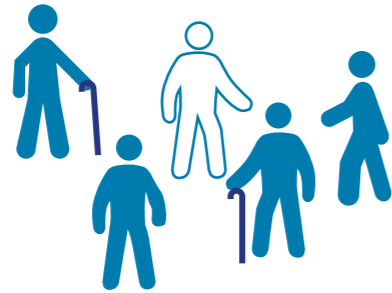
2%
85 years old or older



1 in 12
residents provide
unpaid care



One in five
residents aged 60 or
over are living in income
deprivation



Over a
third
of older
people live
alone



Above average
levels of mental
health issues



19%
of residents are
disabled



22%
of adults aged 20+
live with two or more
long term physical
or mental health
conditions



Smoking, alcohol & drug
dependency, and sexual
health are significant issues
in the city

People are living
longer in ill
health



What matters most to you

This report is designed around the themes which the people we support have told us matter to them. It highlights the key achievements from Health & Adult Social Care during the period April 2024 – March 2025, and summarises some key plans for the future. We have included suggestions on what 'you can' do to help ensure you live as healthily and independently as possible.

Contents

| | | |
|--|---|--------------|
| | Flexible integrated care and support Working together with key partners to provide a range of care and support to meet people's needs. | 6-7 |
| | Information and advice Providing advice and information to ensure people are aware of their options, so they can get the right help at the right time. | 8-9 |
| | Living well and staying healthy Helping people to be as healthy as possible, and managing the impact of long term health conditions. | 10-11 |
| | Staying active and connected Supporting people to access their communities, reduce social isolation and maintain an active life. | 12-13 |
| | Feeling safe and in control Working with providers to ensure local people receive good quality, safe services, and feel in control. | 14-15 |
| | Carers Supporting carers to maintain their caring role and to have a life outside of caring. | 16 |
| | Fair and Inclusive city Removing barriers that exclude people from services and successful outcomes due to their identity, background or circumstances. | 17 |
| | Working together to make positive change Providing care and support to ensure people get the best outcomes and maximise independence. | 18-19 |



Flexible integrated care and support

Working together with key partners to provide a range of care and support to meet people's needs.

We have

Extended provision for older people with eligible care needs, with 1,543 beds ranging from residential, dementia residential, physical nursing and dementia nursing beds.

Created a new Direct Payments Hub to enable more individuals to access greater choice and control over their support needs by giving direct payments to individuals to manage and pay for their own care.

Created more supported living services for people with mental health support needs, helping them to be more independent.

Worked closely with the Voluntary & Community Sector to support the health and care needs of local people, with a significant focus on local health inequalities.

Provided vital housing support and advice to people being discharged from hospital, with our Homeless Prevention Officer post.

Extended funding for two accommodation and support-based services which support individuals leaving mental health hospital.

Created a city wide Integrated Homeless and Multiple Compound Needs Team, building on the work of Changing Futures pilot, bringing together our specialist homeless healthcare, housing and social work teams.

Placed 12 adults with learning disabilities in Supported Living placements in the city, and two new services have opened.

Increased service provision in the city for people with physical disability or acquired brain injury, by commissioning a fully accessible Supported Living Service.

Launched three new Integrated Community Teams and three new Mental Health Neighbourhood teams, supporting more deprived communities to access health, care and support.

Supported people to leave mental health hospital safely through our 'Discharge to Assess Service', promoting recovery in the community.

We have reduced waiting time to access Adult Social Care from **7 months to 6 weeks**



89.8% 
People satisfied with services



“ The support has been exemplary. I'm in the best place possible! I'm now ready to go home and will be sad to leave everyone – but I'll continue with all the approaches I've learned. I'm very grateful – I have healed with all the kindness, good food, and good energy offered here. ”



Promoting Independence

Craven Vale Resource Centre has 18 dedicated beds providing a reablement service. Reablement is a short-term, intensive programme of support designed to help individuals often following illness, injury or a hospital stay. The aim is to support the person to regain the skills and confidence needed to live as independently as possible. This may include supporting someone to dress independently, prepare meals or walk safely to the bathroom.

You can

- Find out about [planning for the cost of your care](#)
- Manage your own care, and have greater independence, choice and control over services you receive through [Direct Payments](#)
- Share your experiences to help us plan service improvements, email customerfeedback@brighton-hove.gov.uk
- Find out more about the [Adult Autism Strategy](#)
- Find out more about the [Sussex Health Care Plan](#)
- You can read more about how [Changing Futures](#) is achieving systems change
- Find out more about the [Adult Learning Disability Strategy](#)



We will

Develop the range of services in the city to expand the choice of provision and options available to people, to meet the changing needs of the population.

Work with our NHS Sussex partners to deliver the aims of the Sussex Neighbourhood Health plan to provide care closer to people's homes, empowering communities, and ensuring services are more joined-up.

Move forward to implement the Transition to Adulthood Strategy plan, to support young people with additional needs as they prepare for adulthood.

Continue to monitor progress on delivering our Adult Learning Disability Strategy and Autism Strategy, to ensure adults and their families receive the advice, support, and services they need.



Information and advice

Providing advice and information to ensure people are aware of their options, so they can get the right help at the right time.

We have

Recommissioned the Carers Hub, providing family and friend unpaid carers with a single point of contact for information, advice, assessment and support.

Continued to improve our Easy Read Information Hub on the council website, including new features such as an accessible events calendar and information about Housing.

Supported 2,004 people to link in with services and activities via the Ageing Well's Information, Help and Advice Team.

Held a drop-in morning for people over 50 with sight or hearing loss where people could learn about the support they can get.

Recommissioned a new advocacy contract including specific arrangements to support refugees, asylum seekers, vulnerable migrants and the Deaf community.

Engaged with local communities to better understand barriers to accessing Occupational Therapy services to help shape future service improvements.

Supported 2,235 people referred to our Healthy Lifestyles Team to access local health and wellbeing information, support and services for stopping smoking, reducing alcohol intake, losing weight or becoming more active.

63.7% 

of people can easily find information about support.

(2024/25 User Experience Survey)

We will

Improve how we offer information, advice and support to help people stay healthy and independent, and to access the care and support they need.

Continue to develop online information services and digital ways of working to best meet the changing needs of people in the city.

Continue to make our information more accessible for people with a learning disability, by developing the Easy Read Information & Advice offer via the Easy Read Information Hub.



The difference a call to Ageing Well's Information, Help and Advice Team (IHAT) made

“ I was supported with a review of my benefits to ensure I had all the correct money coming in — a referral was made for support with energy bills. I was very isolated and information was given to me about local community groups, befriending services, and was referred to my local food bank. ”

“ The link worker was amazing and took so much trouble to help. I've gotten involved in some of the activities — a writing group, attending the 'See and Be Seen' group at Jubilee Library, and The Philosophy Café Meetup. I'm now very busy! ”

Helping people to access support in their communities

The Together Co social prescribing team work with people on a one-to-one basis to help them navigate our complex health and care system. The team recognises the impact of wider determinants on health like housing, employment, isolation, and the need for accessibility.



Support and help

Get [support and information to age well](#) or call 0808 175 3234

[Contact Access Point](#) for the full range of care options available on 01273 295555, or email AccessPoint@brighton-hove.gov.uk

Access [Together Co Social Prescribing service](#) or call 01273 775888

For support with:
Sight loss [contact RNIB](#)
Hearing loss [contact RNID](#)

Get help with [Advocacy here](#) or with the [Advocacy People](#)



You can

- Ask at your local library for help to access resources and the internet, plus details about local events.
- Find out about your [local library](#)
- Get support to [develop your basic digital skills](#), and find out where you can get online help for free.
- Get support to [improve your health and wellbeing](#) or call 01273 294589 or email healthylifestyles@brighton-hove.gov.uk
- Find out about the [Social Care services we provide](#)
- View accessible information on the council website [Easy Read Information Hub pages](#)





Living well and staying healthy

Helping people to be as healthy as possible, and managing the impact of long term health conditions.



We have

Supported 2,084 local people to improve their health and wellbeing through Active for Life, Health Trainer, and Stop Smoking services, provided by the Healthy Lifestyles Team.

Supported over 4,300 adults with mental health and wellbeing needs through the UOK Brighton & Hove service, delivered by a network of 17 voluntary and community sector partners.

Shared cancer awareness and early diagnosis information with 18,397 individuals via multiple communications and engaged directly with 359 people via the Act on Cancer Together team.

Supported over 2,800 adults to access alcohol treatment and recovery services, enhancing targeted support for women, and improving quality of care through co-production with people with lived experience.

Worked with diverse communities to understand barriers to accessing vaccinations, ensuring people know what choices they have and how to access them.

Delivered Learning Disability awareness training to a range of services including GP surgeries, the Sexual Health & Contraception Service and the Gender Identity Service.

Introduced restrictions on the advertising of high fat, salt and sugar products on council advertising spaces including bus stops across the city.

Enabled neighbourhoods to self-allocate small funding pots for grassroots projects, to improve the health and wellbeing of their local communities through the Healthy Neighbourhood Fund.

Supported over 500 patients to access muscular and skeletal clinicians and a range of community health and wellbeing services and support.

We will

Continue to work with local partners to improve the health and wellbeing of local people and reduce health inequalities through delivering on our commitments in the Brighton & Hove Joint Health & Wellbeing Strategy 2019-30.

Continue to work in partnership across the Council, and with integrated neighbourhood teams to reduce harms from drugs and alcohol including for people with co-occurring conditions.

Work alongside voluntary and health organisations and local communities to help people access local support to make lifestyle changes important to them.



Strengthen relationships with local communities, primary care and secondary mental health services through the mobilisation of the Brighton & Hove mental health support service for adults.



“ It was a real joy to host Iftar at the Hub this year. Wonderful Iranian and Somali food was prepared and enjoyed by a mix of locals, friends and families. It was wonderful and we felt like we were among family. ”

Turner Migrant Women

A weekly peer volunteer run drop-in for migrant women living in Turner neighbourhood, including activities like henna painting and cultural celebrations.

You can

- [Get support to make changes](#) to get active, eat better, stop smoking, reduce alcohol intake, get vaccinations, look after sexual health and improve your wellbeing or call **01273 294589**.
- Find out how to [access cancer screening programmes](#).
- See if you are eligible for a [free NHS Health check](#) (to spot the early signs of stroke, kidney disease, heart disease, type 2 diabetes or dementia).
- Find out about local [mental health and wellbeing support available](#) for adults or call **0808 196 1768**.
- Get same day or next day local support in a mental health crisis by calling **111** and selecting the mental health option, or texting the word **SUSSEX** to **85258**.
- Get immediate support if your life or someone else's life is in immediate danger by calling **999** or going to A&E.



The Wild East Network

Fun and educational rambles for different abilities and age ranges, in the Whitehawk area and co-designing ways to interconnect green spaces.



“ I've lived in Whitehawk a long time and I've never been up here, the view is brilliant — I'm really glad I came. ”

The impact of our **Stop Smoking campaign** has led to a **153% increase** in the number of **quit attempts**, compared to 2023/2024 



Staying active and connected

Supporting people to access their communities, reduce social isolation and maintain an active life.

We have

Tackled inactivity and inequalities across the city engaging with 200 Let's Get Moving partners.

Delivered wellbeing programmes including Active Forever 2025, Age Without Limits Day and the Active Ageing Learning event.

Delivered community events such as TAKEPART festival of active living and Active Forever 2025 which provided an array of activities for people to come and try.

Scheduled the 'We are Undefeatable Brighton & Hove' campaign highlighting the benefits of moving more whilst living with a health condition, showcasing local champions, their stories and importance of moving more.

Developed targeted programmes to increase access to physical activity, including Boccia sessions for people at King Alfred Leisure Centre.

Continued to fund the Ageing Well Service 50+. This offers information and advice, befriending, group and one-to-one activity, volunteering opportunities and health promotion.

Delivered the Ageing Well Festival with over 4,000 people attending 135 activities in 65 venues across Brighton & Hove.

Supported an Age & Dementia Friendly city by promoting the Business Recognition scheme to local providers and running dementia information sessions for staff.



Supporting women's safe-space swimming

Sabah from the Muslim community, searched for female-only swimming sessions where she could feel comfortable in modest clothing. She reported improvements in her cardiac health and better management of long-term health conditions. Thanks to the sessions, Sabah now attends weekly women-only swims and plans to teach her daughter and granddaughter, passing on the skills and joy she's gained.



“ I'm new to the city and was feeling lonely, but these activities have given me an opportunity to make some friends and find out about what's on offer. ”

AGEING WELL FESTIVAL

Ageing Well Festival, celebrating 10 Years of connections, community and new adventures:

The annual Ageing Well Brighton & Hove festival gives people the opportunity to try new experiences and enjoy what our city has to offer for people aged 50 and over. It's a place where you can connect with and meet new people, reduce isolation and increase well-being in later life. This year we had a packed, diverse programme.

You can

- **Get in touch with the Ageing Well Service on 0808 175 3234 (freephone) or text 07770 061072 Monday-Friday, 9am-5pm, or you can email ageingwellbh@impact-initiatives.org.uk**
- **Find details of weekly Health walks and other [free community activities](#) that can help you or your family to stay active or call 01273 294589**
- **If you receive benefits, you might be able to apply for a [leisure card](#) to get discounts at some local leisure centres**
- **Receive support to make changes to get active, eat better, stop smoking, reduce alcohol intake and improve your wellbeing through our [Healthy Lifestyles Team](#) or call 01273 294589**
- **Find out more about the [Age and Dementia Friendly Business Recognition scheme](#)**
- **If you are invited for a free [NHS Health Check](#), please attend your appointment. It aims to spot the early signs of stroke, kidney disease, heart disease, type 2 diabetes or dementia**
- **See our [Let's Get Moving Strategy](#)**

We will

Work in partnership to drive forward the delivery of the city's physical activity and sports strategy.

Continue to deliver 'Let's Get Moving Brighton & Hove' with the aim of making Brighton & Hove a city where everyone has the opportunity, the encouragement, and the environment to move more, live well and be healthy.

Support people to age well and continue our work to make Brighton & Hove a dementia friendly city.

Work with partners to offer more options for Day activities for people with learning disabilities in Brighton & Hove, allowing people to gain greater independence and skills, and to get out and about in the city.

Work with partners to further develop accessible spaces and transport provision, so people can access their communities.

Dance Active welcomed 229 performers to an intergenerational community dance showcase.

This inclusive event also featured dancers who are disabled.

“ It's so inspiring to see how creativity comes in all different varieties and styles. Uplifting, inclusive and vital! ”





Feeling safe and in control

Working with providers to ensure local people receive good quality, safe services, and feel in control.

We have

Introduced a new Reviewing Team to support us to work towards ensuring we are meeting people's needs in a responsive and timely way.

Worked in partnership with Healthwatch to deliver the Homecare Checks service, regularly visiting and interviewing people in the city who receive homecare services, to ensure the quality of services are monitored and supporting people's wellbeing.

Developed a refreshed Fuel Poverty & Affordable Warmth Plan for Brighton & Hove to continue helping residents to warm their homes and afford their energy bills.

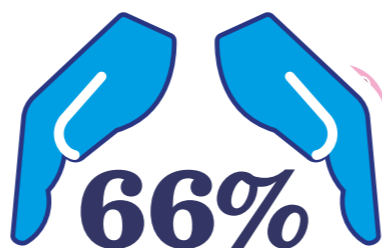
Supported 4,159 people to be independent and feel safe at home through our CareLink Plus telecare alarm service.

Continued to deliver the Community Equipment Service which plays a vital role in promoting independence at home, preventing admissions to hospitals and working to support safe hospital discharge.

Developed the latest Pan-Sussex Safeguarding Adult Policy and Procedures, with updated guidance on multiple compound needs, trauma-informed approaches, multi-agency working, self-neglect and Domestic Abuse.

Supported rough sleepers to access support in the community, through joined up work between social care and the Rough Sleeping Outreach Team.

Provided support in the community, working with the Housing Allocations Team to identify people most in need of Extra Care and Senior Housing.



66%
of People say our services made them feel safe and secure

(2024/25 User Experience Survey)

We will

Work with the Police, Justice System and Youth Offending service to coproduce a review to support them to provide better adaptations for autistic people.

Oversee Adult Safeguarding arrangements by continuing to work with departments across the council and external partners in leading and offering flexible responses to those most at risk.

Ensure good quality care is provided by all services, and action is taken when quality is not reaching acceptable standards through our Care Governance Framework.

Ensure staff are fully trained by continuing to monitor training enabling the provision of safe and quality care.

“ Annual reviews are a key part of Adult Social Care Legislation and they ensure that individuals are getting the care that matches their needs, and we have assurance that we are monitoring the care that people receive effectively. ”

Steve Hook, Director of Adult Social Care

Our new Reviewing Team

Our new Reviewing team is responsible for coordinating reviews for individuals across the care assessment service, to ensure that support is meeting peoples' needs and outcomes.

The team will support improved performance around planned reviews, which aims to reduce the likelihood of individuals and their carers needing crisis interventions related to their social care support.



You can



- [Find further information about reducing your risk of a fall](#)
- [Get support to identify what equipment you need, and how and where to purchase it, via Equipment to help with daily living](#)
- [In an emergency, call 999 or the Typetalk Emergency Line on 18000 \(for deaf or speech impaired people\)](#)
- [Contact CareLink to find out what services and equipment you can access to call for help in an emergency](#)

- [Get help and support if you or someone you know is at risk or experiencing abuse or neglect or contact Access Point on 01273 295555](#)
- [Report a crime \(non-emergency\) or call 101 or textphone 18001 101](#)
- [Report anti-social behavior and hate crime or call 01273 292735](#)
- [Find out about quality of regulated service in the city, at Care Quality Commission](#)
- [Get energy advice and support with your fuel bills by visiting Energyworks or calling the service on 0333 090 9150](#)



81.7%
of people who use services felt in control of their daily lives

(2024/25 User Experience Survey)



Carers

“ It’s important to feel valued, have access to joined-up services and advice, and opportunities to take a break. ”

Supporting carers to maintain their caring role and to have a life outside of caring.

We recognise and support family and friend unpaid carers, who continue to provide a vital role. Carers are disproportionately affected by health inequalities – impacting on both physical and emotional health, as well as the financial impact of caring.



responded to **16,475** information and advice enquiries

We have

Re-commissioned the Carers Hub building on the success of the existing service engaging with carers to ensure our future offer aligns to their needs.

Celebrated Carers Rights Day, hosting coffee mornings and a range of activities including Tai Chi, Peer Support Groups, Wellbeing Walks and a Book club.

Recognised the incredible efforts of unpaid carers in Carers Week, raising awareness of their role, the challenges they face and recognising their contributions to families and communities – providing a Carers Festival.



We will

Work towards delivering our priorities in the new Carers Strategy.

Develop simple and accessible pathways for supporting carers, ensuring that the Carers Hub is central to reaching all carers and encourages as many as possible to become registered.

Work to improve our assessment and review processes across the Carers Hub and Adult Social Care in line with our statutory duties, to enable carers to access support more effectively.

Launch new digital resources for carers, which will build on the new carers card platform and app.



Fair and inclusive city

Everyone should feel included and valued

We want to remove barriers that exclude people from services and prevent them from succeeding because of their identity, background or circumstances.

Health inequalities in Brighton & Hove have been increasing. The Health Counts Survey 2024 identified that the people experiencing the most inequality are:

- Adults living in temporary or emergency accommodation
- People living in deprived areas of the city
- Adults aged 75+
- Females
- Trans, non-binary or intersex adults (TNBI)
- Lesbian, gay, bisexual, queer or other non-heterosexual orientation (LGBQ+)
- Disabled adults
- Adults with experience of the care system as a child/young person
- Unpaid carers



You can

- Find out more about the council’s [Fair & Inclusive Action Plan](#)
- See the council’s pledge to be an anti-racist council and the [strategy and plans to become an anti-racist city](#)
- View council plans to make the city an accessible place for everyone through the [Accessible City Strategy](#)
- See our [vision for improving the health and wellbeing of local people and reducing health inequalities](#)
- [Explore](#) the current and future health, social care and wellbeing needs of the local population
- View our [Health Counts report](#)
- [Take part in surveys, consultations, polls and votes](#) to help create a better Brighton & Hove for all

To reduce health inequalities, we are:

Developing more joined-up services that can be provided locally to support more deprived communities to access health, care, and support.

Improving the collection and use of data, particularly equalities data, to better understand and address the needs of different communities.

Ensuring services are accessible to diverse populations, including those with disabilities or who are socially isolated.

Listening to the views of diverse communities through our membership of city-wide partnerships and engagement activities.

Involving people with lived experience through embedding co-production in our service development and delivery.

The Carers hub offers a range of services:

- Single Point Contact
- Information Advice & Signposting
- Carer Assessment & Support
- Peer Support
- Young Carers Project
- Homebased respite to enable carers to attend health related appointments
- Specialist support for carers of people with dementia, or mental needs, or life limiting conditions
- Range of volunteer Support



You can

Get advice and support for unpaid carers in Brighton & Hove or call 01273 977 000 Send us an email at info@carershub.co.uk



Working together to make positive change

Providing care and support to ensure people get the best outcomes and maximise independence.



Suzanne's journey to recovery at Craven Vale

Suzanne suffered an accident that left her with a fractured pelvis and unable to walk. After 4 weeks in hospital, Suzanne stayed at Craven Vale rehab centre for six weeks, receiving daily physiotherapy and Occupational Therapy support.

Suzanne says:

“ My experience at Craven Vale couldn't have been better. Staff checked on me all the time, and it's very well organised. The food is excellent and part of the holistic healing there. There's a tailored approach to supporting each person and they really do listen – staff are super at what they do – always smiling. I'm absolutely astounded at the kindness of people here, and how well everything works. Craven Vale was life-changing in the most positive way. ”

Inclusive employment – Sam's job success



Sam began working with the Supported Employment Team having never held a paid job before. The team helps individuals with barriers to work, such as learning disabilities, autism, or mental health challenges, to find and sustain meaningful paid employment.

Sam successfully secured a Supermarket Apprenticeship, following support and guidance from the team with his CV, job application and interview process.



CareLink Plus – A Lifeline for Mrs Clark

Mrs Clark, 81, lives alone in Hove and used the CareLink Plus telecare alarm service, which helps people call for emergency assistance at home or outside, increasing independence and safety. When Mrs Clark activated her emergency pendant – CareLink alerted an ambulance in under two minutes, also contacting her son Alan. Alan arrived to support his mother until paramedics took Mrs Clark to hospital, where it was discovered she'd had a stroke.

Alan says

“ I was very grateful for the prompt response. I believe the quick action made a crucial difference to my mother's outcome. ”



DAVIGDOR HOUSE SUPPORTED LIVING

John says:

John who lives at Davigdor House, Mental Health Supported Living Service, also adds, “The staff are always available even when I wasn't communicating much. They check on everyone daily, show genuine concern for tenants' wellbeing, and respect privacy. The house is kept clean and tidy.”



Out and about with Diana

Diana lives in Residential care and is a member of the Speak Out advocacy group. She participated in our Learning Disability HealthWalks, designed to help people who are socially isolated or have mobility challenges, including wheelchair users and autistic individuals, to connect socially and enjoy nature. Diana, who has spina bifida and hydrocephalus, attended with her carer so she could join in safely.

In Brighton & Hove **1 in 12** people provide unpaid care, with many providing over **50 hours** per week.



A carer's journey

Shima is the sole carer for her husband, Immy, who has significant health issues and reduced mobility. She was struggling to manage her own health challenges while supporting Immy with personal care and domestic tasks.

During her carer's assessment, Shima received information about equipment and bathroom adaptations. A Carers Trust grant enabled her to complete a Reiki course.

“ Thanks to the Carers Hub I can use Reiki Healing to support my husband, friends, family, and clients. ”

Shima also attended a workshop on Emotional Freedom Technique to reduce carer-related stress, which she found very helpful and now uses regularly.



Brighton Health & Care Partnership



Brighton & Hove Health & Care Partnership is a partnership between the Local Authority, NHS Sussex and VCSE. The partnership is governed through the city's Joint Health & Wellbeing Board, which oversees the development and delivery of the city's Health and Wellbeing Strategy. It aims to improve the health and wellbeing of the local population and tackle health inequalities. The city's health and wellbeing strategy is aligned with the Sussex Integrated Care strategy: www.sussex.ics.nhs.uk/our-work/our-strategy

The Brighton & Hove Health & Care Partnership is working in support of the new NHS long-term plan and the local implementation of the new Neighbourhood Health reform agenda with its focus on 'Hospital to Community', 'Sickness to Prevention' and 'Analogue to Digital'. In Sussex this is being driven through the new Integrated Community Teams approach. In Brighton we have four Integrated Community Teams one each for the West, Centre and East of the city and a specialist Homeless & Multiple Compound Needs team.

Community Works



Community Works values the strong partnerships within our city that work strategically and in service delivery towards positive health and social care outcomes. Our voluntary and community sector organisations (VCS) have collaborated with Adult Social Care and Health to reach and support communities through these challenging times, to prevent problems worsening and reduce inequalities. Examples of partnership working include Changing Futures, Ageing Well, the Autism Board Partnership, social prescribing, the Joint Strategic Needs

Assessment programme, and a range of initiatives within neighbourhoods and with communities of identity.

VCS organisations help to communicate information through community networks; to create safe and inclusive spaces where people feel listened to and less alone, and where they are supported to access resources and opportunities to help them become and/or stay well, build resilience, and live independently.

We look forward to ongoing joint development and delivery to support local health and wellbeing while making best use of our local resources.

Healthwatch Brighton & Hove



Brighton has a proud tradition of organisations working together towards a common goal, and this detailed report demonstrates how the collective responses of partners across the city are helping to improve social care services.

Using our independence, Healthwatch has continued to scrutinise services through our role as a member of the Health and Wellbeing Board, and various delivery groups. We have captured the voice of service users, to ensure long-term change to services:

- We have supported the Community Mental Health Transformation Programme and have agreed to deliver a project to collate views about new Neighbourhood Health Teams.

- We collated 225 experiences of home care services, funded by the council, supporting ongoing service improvements.
- We have escalated concerns and obtained response, on issues such as temporary accommodation and memory assessment services.

Looking ahead, in addition to continued financial challenges, the impacts on social care delivery from local authority 'devolution' and mayoral elections will need to be closely scrutinised. Government proposals to close Healthwatch and transfer our social care functions to the council will need to be worked through to ensure that the patient and service user voice is not lost from the debate about how to deliver long-term improvements.